



# The future must be green and accessible

## Bristol's Community of Disabled People's Community Climate Action Plan 2022

Updated in 2025

---

**This updated version of the plan was coproduced by the Climate & Disability Forum members:  
Liz Crow, Priyanca D'Souza, James Deane, Elizabeth Edgeworth, Phil Gingell, Ruth Nortey,  
Lynn Parfitt, Beth Richards, Sam Richards, and Layla Taylor.  
Convened by Emma Geen.**



# Introduction

**The climate and nature crises are not just about the environment – they are a social crisis too, and it is vital to tackle them together. There is a huge opportunity for bold, transformative climate and nature action to reduce, rather than exacerbate inequalities, and to improve the quality of life for people locally and globally. This requires ensuring that diverse communities and those most affected by climate and nature breakdown are able to shape our response.**

Bristol has a goal of reducing carbon emissions to net zero by 2030. The One City Environment Board published the One City Climate Strategy in February 2020, setting out a pathway of action on how Bristol can become carbon neutral and climate resilient.

Achieving Bristol's mammoth goal of being carbon neutral and climate resilient, whilst also improving the lives of its residents, especially those most disadvantaged, will require the collective skills, knowledge and energy of the whole city. This community climate action plan for Bristol's community of Disabled people responds directly to this need. It centres the role of communities and community anchor organisations in this.

This plan has been developed as part of the [Bristol Community Climate Action Project](#), which enables communities in Bristol to reduce their carbon footprints, support nature recovery and bring social benefits to local people.



The project aims to contribute to three significant impacts:

- A reduced risk of catastrophic climate change
- A just and inclusive transition to net zero
- Improved quality of life for local people. For example, improved health and wellbeing, economic opportunity, resilience, social cohesion and improved biodiversity.

# Who



**The Community Climate Action Project is a partnership of community organisations across the city: Ambition Lawrence Weston, Ashley Community Housing, Eastside Community Trust, Heart of BS13, and Lockleaze Neighbourhood Trust, coordinated by Bristol Climate & Nature Partnership, supported by the Centre for Sustainable Energy and Bristol City Council (Sustainable City & Climate Change Service). This partnership sees Bristol's communities stepping into a leadership role in the city, demonstrating their ability to respond to the challenges of climate change with effective, community-led action.**

The five core organisations involved in the project represent communities experiencing multiple disadvantages who have traditionally been excluded from the climate change debate and responses to it. Across the city, it is also disadvantaged communities like these that are most vulnerable to the impacts of climate change, such as extreme weather events, disruption to critical services which they rely on, instability in living costs, and so on. Any city simply looking to reduce its emissions as rapidly as possible would not prioritise starting with disadvantaged and excluded communities, as households in these communities typically have the lowest emissions and environmental footprints in a city.

Our strategic response to climate change and nature breakdown needs to be informed by the critical insights and lived experience of the diverse communities which make up our city. If not, we risk designing solutions which further compound disadvantage; failing to respond to important social needs; creating new unintended barriers; and entrenching social and political division and which aren't fit for purpose.

The project's learning and mentoring programme was launched in 2023, with the aim of supporting more, and more diverse, community organisations across Bristol with their climate action journeys.



Since then 11 community groups of place, demography and interest have joined the programme and have been working with their local communities to co-produce climate action plans:

**Cohort 2:** Southmead Development Trust, Knowle West Media Centre, Windmill Hill City Farm, Hillfields Community Garden, and BRICKS (at St Annes House)

**Cohort 3:** Bristol Older People's Forum, Gloucestershire County Cricket Club & the Next Test, Hotwells and Cliftonwood Community Association, One Green Kitchen, Rising Arts Agency, and Shirehampton Action



# What

**During 2021, the core community partners, along with Bristol Disability Equality Forum, coproduced community climate action plans with the communities they represent, having done significant engagement with residents. They are now leading on local demonstrator projects, which respond to key priorities identified in their plans, and contributing to the city's new Community Leadership Panel on Climate and Just Transition. The project also includes a climate and disability strand, which centres Bristol's community of Disabled people in climate and nature action.**

In 2024 five more community groups launched their climate action plans having participated in the learning and mentoring programme, with a further six community groups launching their plans in June 2025. These organisations have received a participation bursary but have had less financial resource from the project than the first round of partners. These cohorts are helping to identify a feasible level of resource needed to develop a community climate action plan process which can be replicated beyond Bristol.

This community climate action plan, and the approach to developing it, has been guided by the principle of a just transition to net zero which improves the quality of life and life chances of citizens, especially those experiencing disadvantage and inequality. Climate projects are often well intentioned, but are frequently extractive of disadvantaged groups by expecting time for free to help them become "more inclusive"; and whilst some climate actions and solutions provide social and economic benefits, others risk making life worse for communities who are already experiencing disadvantage.

The Community Climate Action Project seeks to do things differently, and believes the transition to net zero can and should be a once in a generation opportunity to challenge systemic inequality and improve the quality of life for local people. The project aims to build the knowledge, capacity and confidence of local community organisations, harness their knowledge and insights, and enable them to become leaders in the city's climate action.

The launch in 2023 of Bristol's Just Transition Declaration has created a strategic framework which further supports and guides the just transition ambitions of the community climate action plans and wider project activities. The Declaration sets out 10 principles that everyone working on climate change and nature loss in the city can use to make their plans as fair as possible.



# Why community led climate action?

Climate action requires collective action. By working together we can take powerful community climate action which reduces carbon and improves lives.

The action we take as individuals and households is critically important. And the actions of businesses and organisations, too. But we can't solve the climate crisis without community.

In Bristol, community has been key to so much the city has achieved. It's people working together that makes real change happen. With community we can achieve great things.

During the Covid crisis, community organisations in Bristol showed significant leadership, demonstrating the critical role communities can play in responding to a crisis. The climate and nature crises are no exception.

Community organisations are also experts of their place and the lived experience of their community. They are trusted by people, and so are well equipped to develop pragmatic and targeted solutions which work for their specific communities, rather than imposed from outside. Alongside governmental, business and individual action, community level climate action is a critical piece of the jigsaw if we are to meet the city's ambitious 2030 zero carbon ambitions and with a social mandate whilst also building resilience.



# Climate & Disability Associate Statement



This plan is being updated at a time of great uncertainty and fear for Disabled people nationally and globally. The community is struggling and splintered after decades of austerity, followed by the pandemic, the cost-of-living crisis and now ableist bills being pushed forward by governments in the UK and USA. Disabled people would be forgiven for shrinking from spending time working on yet another existential crisis. Yet I have been constantly inspired, humbled and heartened by how many Disabled people have stepped forward to offer insights, champion the work, and bring constructive challenges.

There are too many people to thank by name but I would be remiss not to mention the brilliant members of the Climate & Disability Forum who have worked for the last year to update this plan. They are Liz Crow, Priyanca D'Souza, James Deane, Elizabeth Edgeworth, Phil Gingell, Ruth Nortey, Lynn Parfitt, Beth Richards, Sam Richards, and Layla Taylor. They all brought great rigour and careful thought to the update of this plan. Their drive and insight was wonderful to work with.

This group expressed both their passion for the cause and a relief to be included in climate change conversations. Despite being one of the groups most at risk of climate change, and also having skills, knowledge and wisdom desperately needed by the environmental movement, Disabled people have been excluded from climate change conversations. McGill University found that Disabled people are systematically ignored by the majority of governments in their climate change work and forgotten in national adaptation plans. And we were shocked when we published the first version of the plan to find that it was the first to be produced by and for Disabled people in the UK, and possibly globally. This is a deeply worrying state of affairs as global warming passes 1.5 degrees and is rapidly heading towards 2 degrees. It's time to change this. Our hope is that our plan can inspire and support other localities to bring their local community of Disabled people into their transition work, and make their own community climate action plans.

This work is also indebted to the late Laura Welti of the Bristol Disability Equality Forum. Laura was a juggernaut of disability activism and a passionate vegan and environmentalist. She was fearless in standing up for both the community of Disabled people and the environment, and had the foresight to initiate this project at a time when disability was an issue that rarely, if ever, entered climate change debate. She is a hard act to follow but we have strived to continue the work in her spirit.

**Emma Geen, Climate and Disability Programme Associate**



# History of the plan

In 2021 Disabled people in Bristol coproduced the first version of this community climate action plan. The work was led by the Bristol Disability Equality Forum (BDEF). The plan is thought to be the first community climate action plan created by and for Disabled people in the UK, and perhaps even wider.

Given the extensive exclusion of Disabled people from climate conversations, the understanding of how climate and disability interact has grown markedly since 2021. So in 2024 and 2025, Bristol Climate & Nature Partnership (the Partnership) worked with a forum of Disabled people to update the plan. The Forum was a pan-impairment group made up of ten Disabled people who were also chosen to represent the intersectional make up of Bristol's community of Disabled people, including diversity in race, class, age, gender and sexuality. The work was led by Disabled woman Emma Geen, in her capacity as Climate & Disability Associate who had also led on the first version of the plan, to ensure continuity.

The Forum went through the previous version of the plan section by section and, through extensive discussions, added a level of rigour and depth of insight that wasn't possible to add to the first version of the plan – given its creation during the Covid-19 lockdown period.

The Forum is proud of the work that they have created but wish to emphasise that knowledge about disability and climate change is growing all the time. They hope that people are inspired by their plan but also understand that it won't be the last word on disability and climate change.

The aims and actions in the plan will also often require in-depth co-production with Disabled people to execute in an accessible way. We encourage organisations working in this area to collaborate with Disabled people's organisations (DPOs) in Bristol to do this work.

An ongoing Climate and Disability programme which champions this plan and its priorities, will form part of the next phase of the Community Climate & Nature Action project (Autumn 2025 – Summer 2028). Bristol Climate & Nature Partnership aims to collaborate with a Disabled Person's Organisation (DPO) from the West of England region to deliver this programme. Ongoing information and updates will be shared via the Partnership's website and monthly newsletter.

## Disability organisations

- [Disability Inc](#) is part of the local disability charity WECIL. It is available to carry out access audits
- [Bristol Disability Equality Forum](#) is a local pan-impairment disability charity
- [Centre for Deaf and Hard of Hearing](#) represents d/Deaf people and people who are hard of hearing in Bristol
- [Bristol Sight Loss Council](#) represents people with sight loss in Bristol
- [Changes Bristol](#) represents people with mental health difficulties in Bristol
- [Transport for All](#) is a national charity about transport for Disabled people. It has an interest in accessible sustainable transport



# Our ambition

**You only need to look at Greta Thunberg to understand that Disabled people have the potential to be great climate change leaders. In Greta's words, our impairments allow us to 'think outside the box'. As Bristol prepares to lower carbon emissions for our 2030 commitment, the city will have to not only think outside the box but reimagine it.**

Such times can bring in much needed and positive changes and our Disabled people's community has a lot to gain as the city adapts. Transport changes can make travel more accessible. Energy changes can help tackle our community's fuel poverty. Changes to food can improve our community's food insecurity. Meanwhile, by improving nature and access to it, our community can reap important benefits to physical and mental health.

However, Bristol's Disabled people also face increased risks in the face of climate change. Poverty, inaccessible resources and, prejudice and discrimination mean that many Disabled people will struggle to understand and prepare for climate change. The changes that society makes to slow climate change can also create new barriers if carried out without thought.

Our plan is created with the aim of reducing the emissions of our community in a way that both avoids new barriers and actively improves our quality of life. Changes made for Disabled people are shown again and again to be good for everyone. So our plan should bring benefits for everyone in Bristol.



# Our community



**The Disabled community has a complicated relationship with environmental issues. Many Disabled people are engaged and concerned environmentally. However, ableist and disablist treatment from the environmental movement has led to justifiable anger and mistrust of climate action among some members of the Disabled community.**

The eco-ableism of the environmental movement often stems from misunderstanding the needs of Disabled people as niche and of lesser importance than the rush to tackle the climate crisis. Even if this unethical stance could be justified, it is a mistake to think of the Disabled community as a minority.



Photo credit: Evoke Pictures

Climate change is a mass disabling event, whether as a result of injury in extreme weather, pandemics or war. Climate change will cause mass displacement and the incidence of physical and mental/emotional trauma is also very common among refugees: “Refugees, asylum-seekers and other forcibly displaced populations typically report exposure to a high number of potentially traumatic events in their countries of origin and during displacement. These experiences are often prolonged, repeated, and interpersonal in nature and have a pervasive negative impact on mental health (2, 3). Accordingly, refugees have consistently been observed to present with high prevalence rates of trauma.”

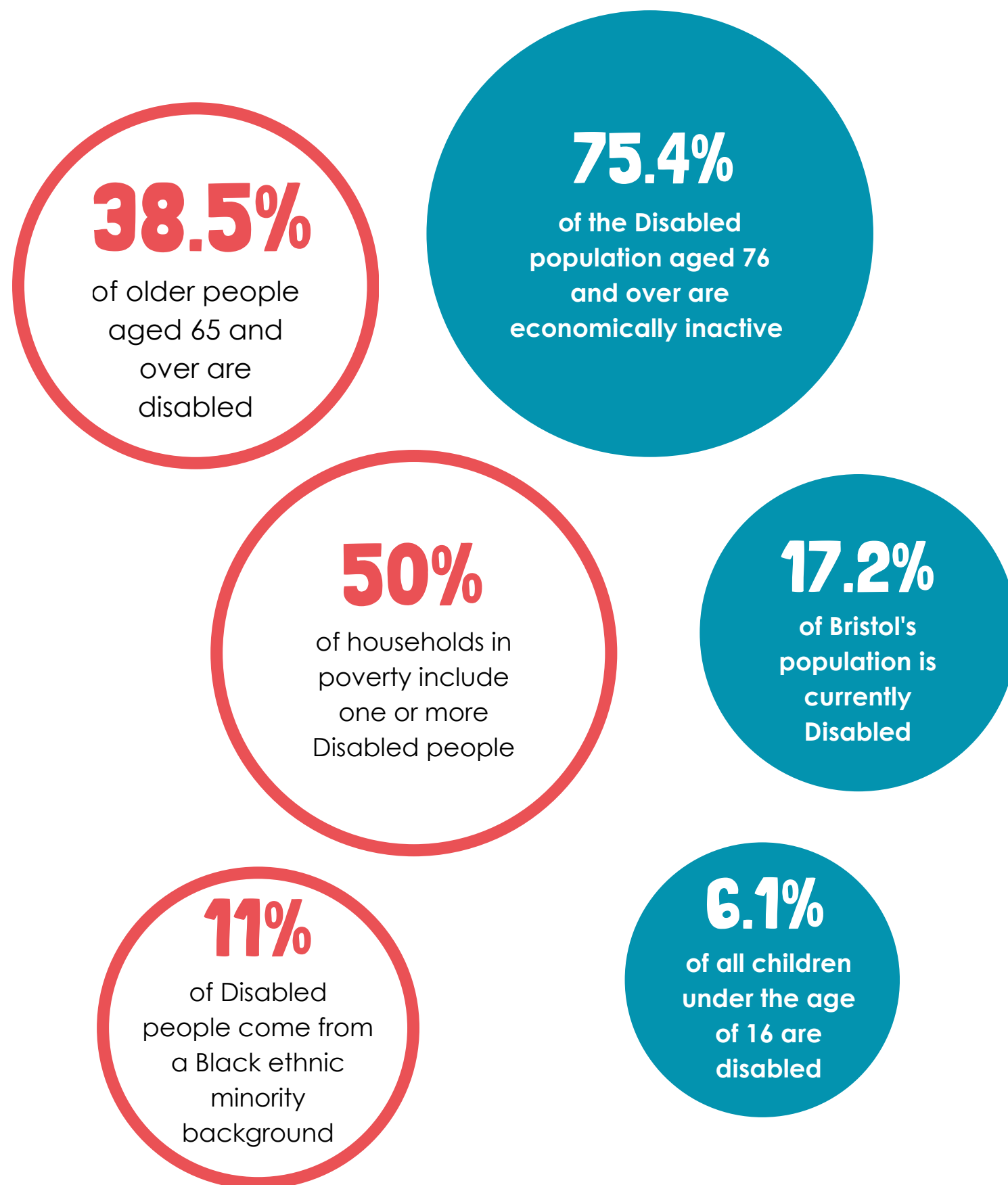
The community faces many inequalities beyond those that are directly related to health. Many Disabled people live in the most deprived wards of the city and employment levels are far lower than in the non-Disabled population. Over three-quarters (75.4%) of the Disabled population aged 76 and over are economically inactive compared to almost a quarter (24.9%) of those not Disabled, and Disabled people are almost twice less likely to be employed in managerial or professional occupations (19.8%) than those not Disabled (34.7%).

With the government reporting that 50% of households in poverty include one or more Disabled people, these inequalities have a heavy toll on life satisfaction. Almost half (46.7%) of Disabled in Bristol report having an “adequate” or “worse” quality of life. This alarming figure highlights how much our community has to gain from climate plans if they are used as an opportunity to bring in improvements for the community.

The Disabled community in Bristol is a large and important one. 17.2% of the population (81,160 people) is estimated to be Disabled (data from 2021 census). This is almost certainly an underestimate due to a significant minority of Disabled people not being willing to self-identify as such – especially over 70 year olds. On a national level, Disabled people make up 24% of the population.

There are more women than men with a “limiting long-term illness or disability” living in Bristol – 18.9% of women and 15.5% men. The proportion increases with age, Disabled people make up 6.1% of all children aged under 16, 16.0% of the working age, and 38.5% of older people aged 65 and over. 11% of Disabled people come from a Black ethnic minority background. The lower percentage likely stems from a reluctance of people from these communities to publicly identify as a Disabled person – for a variety of reasons.

If they live long enough, everyone experiences disability – whether temporarily, such as through a broken leg, or through age related impairments. The climate action plans that are put in place to achieve carbon neutrality by 2030 will shape the city for many decades to come and their accessibility will affect the large majority of those living in Bristol, whether now or when they are 80. Climate action by and for Bristol’s community of Disabled people is not a niche interest, but important action for the future well-being of everyone in the city.



# Community climate heroes:

## Zac Jones

Zac Jones is a 30 year old Disabled person and lives in Sea Mills.

He was inspired to keep the city clean after seeing mess in the streets and knowing that we can make a difference. Now he carries out regular litter picks and runs environmental sessions explaining how to recycle.

He's also gone straight to the source and persuaded beer companies to remove plastic from their products.

He was recognised for his work by being asked to lead the march with Greta Thunberg when she visited Bristol in 2020.

**"Litter picking means that people can be out in their local environment enjoying it and being safe."**



# Our baseline community carbon footprint



## What did it tell us?

### Our community's carbon footprint report

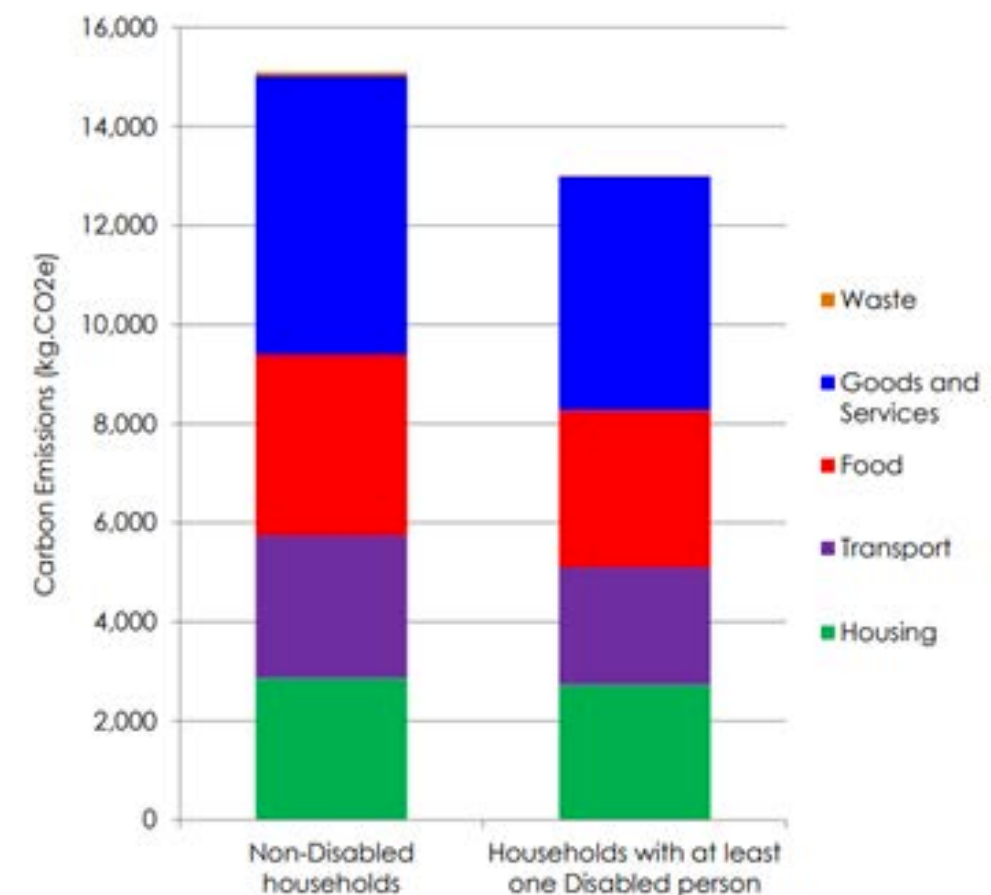
**While Bristol's community of Disabled people is likely to be one of those most impacted by climate change and climate adaptation, it is one of the least responsible for emissions. The carbon footprint of Bristol Disabled people's community is considerably lower than the Bristol average.**

While our emissions are lower, their sources are largely similar to those of the non-Disabled community. As with non-Disabled households, our largest emissions come from goods and services, followed by food.

The carbon footprint report dispels assumptions around the energy use of the Disabled community. Despite the extra energy needs presented by mobility aids, the need for private vehicles, and heating homes, our energy usage is still lower than non-Disabled households. For instance, though public transport is often inaccessible, a larger proportion of our emissions arise from use of public transport than non-Disabled households. This is likely because:

1. Car ownership levels are lower than for the general public.
2. Only a small percentage of Disabled people are wheelchair users.
3. Bristol provides free 'companion bus passes' for those unable to use public transport alone.
4. Other factors limit many Disabled people's movement outside of the home.

This is a good example of how the difference in emissions between the Disabled and non-Disabled community lies with the fact that many of the most polluting activities in society are those that Disabled people are less likely to carry out due to lack of access or income. Everyone, including the Disabled people's community in Bristol, must reduce their emissions to face the scale of the climate change crisis that threatens the whole world. Yet our carbon footprint highlights that a key priority for climate action should be to tackle inequalities and make Bristol better for Disabled people. As Bristol takes on the challenge of reimagining itself this is an important moment to make sure that the changes are those that make our city fairer, more accessible and healthy for all.





# Bristol climate context

The science on the climate emergency is clear: we need urgent action to reduce our carbon emissions to limit global temperature rise to below 1.5°C, and to prevent disastrous impacts. Climate-related risks to health, livelihoods, homes, food security, the environment, our flora and fauna, raw materials, water supply and economic growth will continue to increase in severity. Even if we manage to limit change to 1.5°C (which now looks unlikely), the impacts will be felt differently in different regions.

Populations most at risk are marginalised, disadvantaged and vulnerable. In Bristol, some of our most deprived wards will be the most exposed to the physical impacts of climate change. The potential impacts of climate change on our city and its residents are significant and wide ranging.

**“The climate crisis poses major risks to people and places worldwide. It is deepening and creating new forms of social inequality. Disabled people are already more likely to be on the frontlines of adverse climate impacts. These climate risks are exacerbated by eco-ableism. That is, the failure to include Disabled people in climate action. Or to recognise the valuable insights that Disabled people can bring to climate responses.”**

**-Dr Sarah Bell, Sensing Climate**

In the Bristol One City Climate Strategy (Preliminary Climate Resilience Assessment), evidence was gathered on physical climate risk to the city. Under a high emissions scenario, by 2080, Bristol's coastline is projected to increase by up to 72cm, winter rainfall is projected to increase by up to 48%, summer maximum temperature is projected to increase by over +9°C, and summer rainfall is projected to decrease by up to 68%.

This milestone is the age today's primary school children will retire. These climate hazards present serious risks to Bristol's homes, businesses, schools, community assets, and critical infrastructure, causing negative impacts to livelihoods, disruptions to our daily lives and a risk to life. These impacts will get progressively worse up to 2080.

Climate change is a complex challenge. We recognise the interconnected and global nature of the world, which exposes Bristol to potentially catastrophic climate risks arising well beyond the city's boundary. We also acknowledge our local, national and global responsibility to take bold and immediate climate action as a city, to increase the city's resilience in the face of these risks, and to share our successes and challenges openly and generously.

## Taking action in Bristol – One City Climate Strategy

Bristol has committed to reducing its carbon emissions to net zero and becoming climate resilient by 2030. [Bristol's One City Climate Strategy](#) outlines the key changes across the city, and the UK, that will be needed to reach our climate change goals. Whilst Bristol's average carbon footprint is lower than the UK average, transport and food and diet is where emissions are greater than the average. Therefore, the community climate action plan has been an opportunity to engage members of our community in this important mission of tackling climate change, to explore how they can take the lead on changes in our community, and how we can ensure we maximise the benefits that can come from these changes – warmer and more affordable-to-heat homes, quieter and safer streets, cleaner air.

Our natural environment is critical to our wellbeing and the climate resilience of our city. Preserving and supporting the green spaces of Bristol will decarbonise the air we breathe, and improve our mental and physical health. It will also reduce the risk of flooding and extreme temperatures (the two major climate change risks facing Bristol in the coming years), and act as a carbon 'sink' (absorbing carbon from the atmosphere).

## Taking action in Bristol – Ecological Emergency Strategy

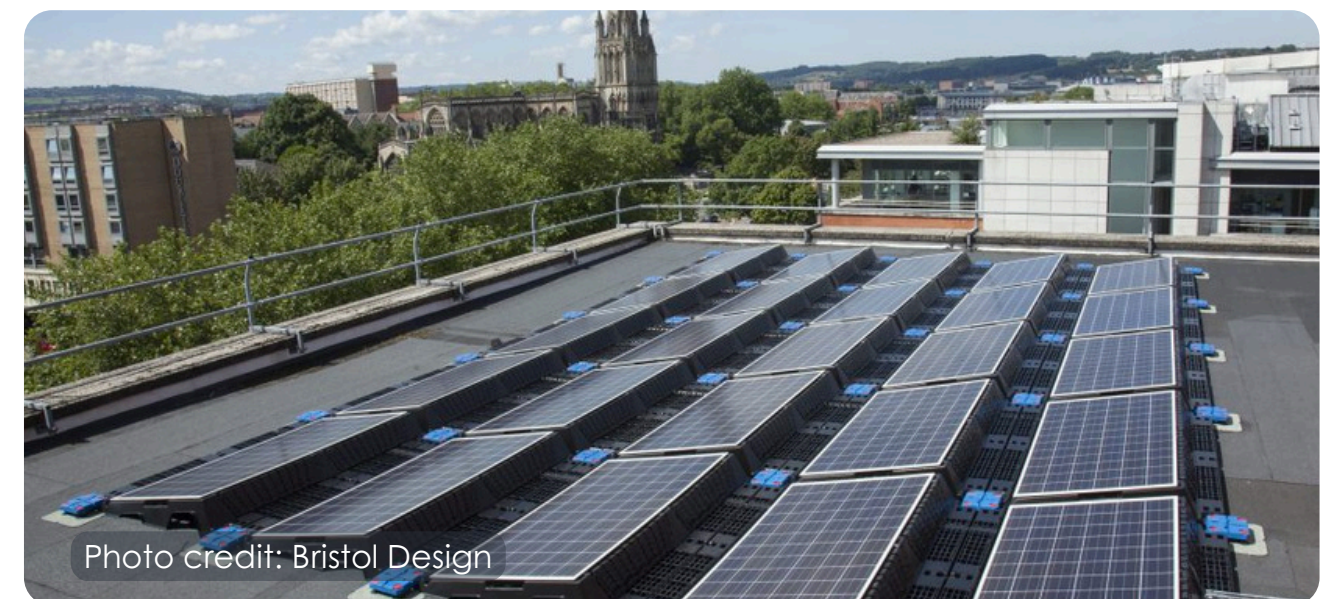
In February 2020, Bristol declared an ecological emergency in response to the decline in wildlife in the city. In September 2020, the Ecological Emergency Strategy for Bristol was launched as the city's first coordinated effort to confront the decline in nature.

The strategy sets out the key ecological actions we need to take to achieve a carbon neutral and climate resilient city by 2030 and consists of four goals:

- Space for nature - for 30% of land in Bristol to be managed for the benefit of wildlife.
- Pesticides - to reduce the use of pesticides in Bristol by at least 50%.
- Pollution - for all waterways to have excellent water quality which supports healthy wildlife.
- Our wider footprint- to reduce consumption of products that undermine the health of wildlife and ecosystems around the world.

[You can read a full summary of the recommendations from the Bristol's Ecological Emergency Strategy for the city here.](#)

We have given consideration to the ambitions of both these key strategies when developing the priorities of our community climate action plan.



## Bristol City Leap

Another development significant to the communities working on community climate action is the Bristol City Leap programme. This is a 20-year joint venture partnership between Bristol City Council, Ameresco and Vattenfall Heat UK. It is designed to enable the delivery of over £1 billion of investment into Bristol's energy system at a time when the UK is struggling to match resources to the scale of change needed to address climate change and the energy/cost of living crisis.

What will City Leap do?

- Significant expansion of Bristol's Heat Network to provide the city with reliable affordable low carbon heat from sustainable sources.
- Solar panels and low carbon heating systems for local schools.
- The council's social housing will be made more energy efficient to tackle the cost-of-living crisis.
- Substantial investment will go into community-owned renewable energy projects.
- Provide funding to communities to support community energy projects.



# Beyond Bristol

## The West of England Combined Authority

The city of Bristol is located within the West of England Combined Authority (WECA) area and some significant climate and nature central government funding and policy comes through WECA and impacts Bristol communities. This includes some aspects of strategic transport, skills and major developments along with some aspects of land use planning and the planning of housing. The West of England Combined Authority covers the council areas of South Gloucestershire and Bath & North East Somerset, as well as Bristol. It does not have elected councillors, only the Mayor is elected. Similar two-tier arrangements are in place in most of the larger cities and regions across England.

In 2022, the [Climate and Ecological Action Plan](#) for the West of England region was launched, and in 2024 [the West of England Nature Recovery Strategy and Toolkit](#) were launched.

## National context

Many of the actions communities want to see are not under the remit of local councils or Combined Authorities. We feel it is important to include these nonetheless - often local authorities can play a role allying with local communities to lobby central government for legislation, funding or policy change. Greater devolution of powers and budget from central government are planned for the coming year.



# Our methodology



The data and ideas for this plan update were gathered from the summer of 2024 to the summer of 2025. It was developed by:

- **The Forum:** This group was made up of 10 paid local Disabled people. This group represented a wide range of impairments and backgrounds. This group met bimonthly.
- **Disabled people who live or work in Bristol:** Disabled people and their organisations were invited to contribute feedback on the Forum's work through two public events.
- **Emma Geen:** Climate and Disability Programme Associate Emma Geen carried out the public engagement, organisation, governance and report writing for the project.



The methodology for creating the first version of the plan included the following engagement tools.

**1. Project survey:** The project survey was created through a collaboration between Bristol Disability Equality Forum (BDEF) staff, the project steering group and survey analysts. Online and physical copies were created and were shared by disability groups, care homes, and environmental and justice organisations across the city. Targeted adverts for the survey ran in local news platforms and on Facebook. A video was created to inspire people to fill in the survey. A CD version of the video was sent to BDEF members without internet access and the digital version was shared widely by groups across the city. A flyer was created to direct people to the survey and was shared in community centres and posted through doors.

**2. Sofa stalls:** BDEF staff ran regular stalls in shopping centres and at community events across the city. These stalls invited Disabled people to sit and talk about the issue over a cup of tea and a biscuit. The ideas and concerns that arose were fed into the survey.

**3. Sharing sessions:** The project is the first of its type with Disabled people and many survey respondents reported that it was hard to think of ideas. So several sharing sessions were run. These brought together any Disabled people with subject experts and council representatives. Disabled people shared the expertise of their lived experience of a particular theme and subject experts suggested potential solutions. Both parties then developed these ideas through discussion. These sessions were on the themes of nature, transport, energy and food. Some were run online, some in person and some through blended sessions.

**4. Presentations:** BDEF ran two Open Forums on the plan and, where Covid restrictions allowed, presentations were made to other disability groups, and as part of festival line-ups.

# Community climate heroes:

## Beth Richards

Beth Richards is a 37 year old Disabled person and lives in Cotham.

She wants to be part of helping people to change their behaviour so that nature can survive. In her personal life she works hard to reduce her personal waste by buying zero waste products and reducing plastic use. She also works to educate people around her and has made an animation about plastic use, a window display for Window Wonderland, and is an activist for Extinction Rebellion.

She needs easy read information, so some climate change information is too difficult for her. This can be a challenge.

If she could encourage people in Bristol to do one thing it would be to use their cars less so that the air is cleaner and it would be less scary for her to ride her trike.

**"If people use their cars less, the air would be cleaner and it would be less scary for me to ride my trike."**



# Priorities and actions



**Residents' priorities and actions to achieve them have been grouped into eight key climate themes – Transport, Homes & Buildings, Energy, Food, Waste & Resources, Nature, Business & Skills and Being Prepared as Communities.**

The following priorities and actions were developed with the local community through our community engagement process and refined with support from Bristol Climate & Nature Partnership and various community climate action partners from across the city. There is also crossover and connection with the priorities developed by partners in other geographic neighbourhoods in the city and with the citywide priorities in the community climate action plan of Bristol's community of refugees and asylum seekers.

We have scored the recommendations according to the monetary cost (Resource: Cost), staffing and effort required to achieve it (Resource: People), potential reductions in carbon emissions (Impact: Carbon) and positive impact on the community through social benefits (Impact: Community). While not exhaustive, we have also listed some key stakeholders and potential collaborators, many of whom are already doing work related to the priority and whose support and leadership will be critical to success. Some of these stakeholders have not yet been involved in developing the plan. Rough timescales for implementation of priorities have also been noted to highlight quick wins alongside significant strategic changes that will take sustained, long-term and citywide action. Where possible the priorities and action have been broken down into 1) organisational 2) community wide 3) citywide.

## Scoring definition

1 - Very Low, 2 - Low, 3 - Moderate, 4 - High, 5 - Very high/significant

## Timescale

1-2 years (quick win)

3-5 years (medium term larger scale)

5-10 years (significant or complex)



## Criteria scored

Resource: cost  
Impact: carbon

Resource: people/time  
Impact: community

The big changes coming to Bristol for 2030 could have huge benefits for Disabled people or create new barriers for us. So many of our aims focus on:

1. Preventing these barriers before they occur and,
2. Tackling barriers that already exist.

This is a big job that will require a lot of money and work. It is not up to Disabled people to make all of these changes and we don't have the power to make many of them.

Bristol's community of Disabled people cannot improve the quality of pavements, pay grants to get Disabled people cheaper energy, buy a new fleet of buses, or remove barriers from park entrances.

However, that does not mean that Bristol's community of Disabled people can't make important changes. Bristol's community of Disabled people can run campaigns to make sure that these priorities aren't forgotten, develop some initiatives ourselves, and the community can make projects to enable Disabled people to make changes in their own lives.

So Bristol's community of Disabled people have written our priorities as 'City Owned Priorities' and 'Community Owned Priorities'. The City Owned Priorities are the changes that the community is asking from politicians, businesses, communities and other people with power in Bristol and, in some cases, across the UK. They include actions that the community has told us are the best ways to achieve our Priorities. We will advocate for and support these changes, but they are not up to us to make.

'Community Owned Priorities' are the projects that we aim to run as Bristol's community of Disabled people. One of the most important of these is raising our voices to make the 'City Owned priorities' happen.

Disabled people can take the lead in making a better and greener future for our community, but we need all sections of the city to work with us if we are to do this. Please read on to find out how we can create a Bristol that is better for everyone.



## Top ten priorities

This plan is written in a point of time following the cost of living crisis, the Covid-19 pandemic and decades of austerity. Society, as it stands, is deeply ableist and inaccessible. Accessible and inclusive climate action is therefore complicated and nuanced work that requires a large number of changes. The increased length of this plan update reflects the complexity of this work.

The authors of this plan acknowledge that actioning such a large plan can be daunting and unwieldy. The Forum therefore decided on a list of top ten aims to create a more friendly entry point to taking action in this area.

Deciding upon this list took great deliberation because the large majority of actions listed in this plan are of importance to Bristol's community of Disabled people and their quality of life. The top ten therefore doesn't reflect importance so much as the actions that should be executed first, either to protect life or to facilitate the conditions that would make actioning other aims easier.

The priorities listed have their own detailed accompanying actions. These actions can be found later in the document in the relevant theme sections. Where a priority is relevant to your areas of work we strongly encourage you to refer to the full list of actions.

### **1 Disabled people's safety needs to be a top priority in planning for disasters.** ([Read more in the being prepared as communities section.](#))

Disabled people are two to four times more likely to be injured or killed during disasters. Yet our community's needs are often forgotten when planning for disasters.

We don't have local data, but globally:

- 71% of Disabled people do not have an individual preparedness plan for disasters (UNDRR, 2013).
- 13% of Disabled people have no one to help them to evacuate (UNDRR, 2013).
- 85% of Disabled people have not participated in community disaster management and risk reduction processes in their communities (UNDRR, 2013).
- Only 20% of Disabled people say they would be capable of evacuating immediately in the event of a sudden disaster (UNDRR, 2013).
- The [2023 UNDRR report](#) shows there's been little to no progress.

We need action communicating with Disabled people so they understand how to prepare for extreme weather events, support for individuals to create personal plans for emergency, accessible safe, warm and cool spaces, and drills of evacuation procedures with Disabled people to ensure accessibility.

## 2 Make sure all new homes are at least partly accessible. ([Read more detail in the housing section](#))

Bristol's housing stock is currently failing the community of Disabled people's needs. Disabled people in social housing often find themselves in unsuitable accommodation or moved around the city away from their support networks. Many Disabled people also find themselves housed in areas of the city and accommodation that makes them more at risk of the climate disasters they can be more vulnerable to.

Lack of access to suitable housing is a disadvantage that has extensive knock on effects – making employment and access to other essential areas of life difficult or impossible. This in turn makes it impossible for Disabled people to have the capacity to think about climate change and act in suitable ways. Ensuring housing that meets the needs of Disabled people through the whole of their life will save a lot of materials and money that is needed for action on climate change.

## 3 Bristol City Council to make a register of accessible housing. ([Read more detail in the housing section](#))

This would let people know where accessible housing is and what level of accessibility it has. This would also help emergency services when planning for disasters.

## 4 Ensure all new transport projects are accessible. ([Read more in the transport section](#))

To make our city sustainable, we need big changes to how we travel. But not everyone can walk, cycle or use public transport. When making changes to transport we have to make sure that these projects are accessible otherwise lots of Disabled people will struggle to get around the city. However, if accessibility is thought about then these projects could be used to make neighbourhoods better for Disabled people.

## 5 Make public transport more accessible. ([Read more in the transport section](#))

Many communities in Bristol find that the buses aren't meeting their needs. Disabled people have all the same problems but face extra accessibility barriers with them too. Many Disabled people experience hate crimes on our buses or unfair treatment by drivers. They find that accessibility features like ramps don't work or that there aren't enough spaces for wheelchair users. If we want people to drive less, then public transport has to be made more accessible so it becomes a safe, comfortable and affordable choice.



Photo credit: Evoke Pictures

**6 Support Disabled people to source accessible and affordable food that is good for the planet. [\(Read more in the food section\)](#)**

Many Disabled people experience food poverty. It is hard for them to get enough healthy food to eat, let alone sustainable food. Food projects should make sure that Disabled people can be part of them and support Disabled people to understand how to cook and eat in ways that are good for the planet when this is something they are able to do.

**7 Make sure that Disabled people are part of designing all the city's projects on climate change action. [\(Read more in the general section\)](#)**

Most non Disabled people have no idea about the difficult barriers that many Disabled people face. This means it is easy and likely that they design projects on climate change that make new barriers for Disabled people. However, if Disabled people are included in making projects in a meaningful way from the start then not only can barriers be avoided but society can be made more accessible. Working with Disabled people is also cheaper than trying to fix barriers after a project has been put in place and problems found. Working by co-production is key here.

**8 Make sure that Disabled people are a priority community to get new green jobs. [\(Read more in the business and skills section\)](#)**

Many jobs in our society are inaccessible. This means that many Disabled people who could and want to work are unable to. Not being able to work traps Disabled people in poverty and leads to lots of other problems and barriers. When jobs are made to take action on climate change these could be made in an accessible way that would help more Disabled people get into work. These jobs could be helpline jobs that people with mobility impairments could do from home or nature jobs that could be a good fit for some neurodivergent people. Disabled people also have a lot of wisdom that they can bring to the climate change movement. Think about Greta Thunberg who is an autistic woman and says her autism helps her think outside the box on climate change.



Photo credit: Evoke Pictures

**9** Consider the needs of Disabled people when designing nature spaces for heat resilience. ([Read more in the nature section](#)).

Some Disabled people in Bristol are already fainting in their homes during hot weather. This is only going to get worse as climate change makes our planet hotter. We need to make changes now to keep our communities safe. One really good way of doing this is to bring more nature into our city and making it accessible. For example, making parks accessible or adding more trees to our streets. Doing this work is also good for nature and the planet.

**10** Value the work of Disabled people even if it is voluntary. ([Read more in the business and skills section](#)).

Whether or not they can get a job, Disabled people have a lot of value and can make positive change for Bristol. Disabled people should be supported to do this work and for it to be valued. Sharing lived experience is valuable work and when it can't be paid for with money, it should be valued by giving something back like vouchers, food or training.



Photo credit: Evoke Pictures

# Priorities and actions: General

Creating a just transition for Disabled people not only requires specific actions to be taken but a change in approach and ethos. This section sets out this ethos and should be applied to the work of executing all other sections of the plan.

## City owned

### **PRIORITY 1. Ensure that Disabled people play a meaningful role in codesigning all the city's projects on climate change action.**

#### **ACTIONS:**

- a. Make a Disabled people's Climate Action Plan Group who the local councils should be accountable to. This would be a pan-impairment group of Disabled people with good intersectionality. Climate action plans should be brought to them for feedback in a meaningful way. This includes bringing projects to the group early enough that feedback can shape the project and the group's access needs around time and deliberation are met.
- b. Co-production should always be the preferred methodology when designing projects. This should not be a tick box exercise. Time and money should be invested to make this possible. [The co-production advisory policy](#) can be used as an example of best practice.
- c. Co-production and consultation should be truthful about the power that people have to influence a project and who has the final decision-making power.
- d. Many people who are disabled by society don't think of themselves as a Disabled person. For example many neurodivergent people don't identify in this way, which can mean they don't access support they would be entitled to. Some aspects of this can be cultural but it's also often a result of stigma associated with disability and lack of awareness of the social model of disability. Action on just transition for Disabled people should include the needs of the people who could count as Disabled but don't identify this way. Part of this work should be supporting people to feel comfortable accessing disability support and identifying as Disabled.

### **PRIORITY 2. Policy and processes should be carried out in a fair and meaningful way.**

#### **ACTIONS:**

- a. Reasonable adjustments should always be made.
- b. Equality impact assessments should be carried out by a Disabled person or someone with a good understanding of the needs of the community of Disabled people.
- c. Transition work should always hold in mind that different people need different support to act sustainably.
- d. Disabled people care about climate change but the inaccessibility of society means that taking action is often not possible. Meanwhile, many of the changes needed are systemic or large-scale infrastructure ones that no individual has the power to make. Responsibility should be shifted away from individuals to the systemic changes that make the sustainable option the easy, affordable and desirable option for everyone.

**PRIORITY 3. Support the national changes that will make local change possible.**

**ACTIONS:**

- a. Creating the conditions for some of the actions listed in the plan will require a change in national and local politics. In some cases they require services to be returned to public ownership, better funding for local councils, more investment in public services, greater protections for human rights and protections for disability benefits. The authors of this plan acknowledge that these changes are unlikely to lie in the power of people reading this plan but ask readers to support these changes where opportunities arise.
- b. Welfare benefits are essential for many Disabled people to manage daily living and to have full access to society. Disabled people won't have the capacity to be part of the climate change conversation or support transition if benefits are cut. Disability cuts are an unacceptable attack on the community of Disabled people. It is already unreasonably hard to access disability support, such as blue badges or Personal Independence Payments (PIP). Accessing support needs to be made easier, not harder. While the authors of this plan acknowledge, again, that these changes are unlikely to lie in the power of people reading this plan, we ask readers to act in defence of the community of Disabled people when it is under threat.

**PRIORITY 4. Council contracts should consider the accessibility and sustainability of the services provided. Services should support Disabled people over the long term.**

**PRIORITY 5. Ensure that all work is intersectional.**

## Community owned

We will advocate for these changes as a community. This work can be hard when the community of Disabled people faces so many other barriers and existential threats. Not everyone can do this work and no one can do it all the time. However, for our needs to be included in climate action, Disabled people and Disabled People's Organisations need to join conversations and advocate for our rights when this is within our means. Without representatives in the room when plans and policy are designed, our needs won't be included.



# Priorities: General

## Scoring of priorities

1 - Very Low, 2 - Low, 3 - Moderate, 4 - High, 5 - Very high/significant

PRIORITY	POTENTIAL COLLABORATORS + STAKEHOLDERS	RESOURCE: COST	RESOURCE: PEOPLE	IMPACT: CARBON	IMPACT: COMMUNITY	TIMESCALE
1. Ensure that Disabled people play a meaningful role in codesigning all the city's projects on climate change action	<ul style="list-style-type: none"> <li>• Bristol City Council</li> <li>• West of England Combined Authority</li> <li>• One City Environment Board</li> <li>• Local Disabled People's Organisations</li> </ul>	4	3	4	5 Equality – preventing new barriers  Society – reduced inequalities	5 - 10 years
2. Policy and processes should be carried out in a fair and meaningful way	<ul style="list-style-type: none"> <li>• Bristol City Council</li> <li>• West of England Combined Authority</li> <li>• Local Disabled People's Organisations</li> </ul>	3	3	4	5 Equality – preventing new barriers  Society – reduced inequalities	1-3 years
3. Support the national changes that will make local change possible	<ul style="list-style-type: none"> <li>• Bristol City Council</li> <li>• West of England Combined Authority</li> <li>• Local Disabled People's Organisations</li> <li>• Local Non-Governmental Organisations</li> </ul>	2	3	5	5 Equality – preventing new barriers  Society – reduced inequalities	5 – 10 years



# Priorities: General

## Scoring of priorities

1 - Very Low, 2 - Low, 3 - Moderate, 4 - High, 5 - Very high/significant

PRIORITY	POTENTIAL COLLABORATORS + STAKEHOLDERS	RESOURCE: COST	RESOURCE: PEOPLE	IMPACT: CARBON	IMPACT: COMMUNITY	TIMESCALE
4. Council contracts should consider the accessibility and sustainability of the services provided. Services should support Disabled people over the long term.	<ul style="list-style-type: none"> <li>Bristol City Council</li> <li>West of England Combined Authority</li> </ul>	1	3	4	5  Equality – preventing new barriers  Society – reduced inequalities	1-3 years
5. Ensure that all work is intersectional	<ul style="list-style-type: none"> <li>Bristol City Council</li> <li>West of England Combined Authority</li> <li>Local Non-Governmental Organisations</li> </ul>	3	2	4	5  Equality – preventing new barriers  Society – reduced inequalities	5-10 years
<b>Community owned</b> 6. We will advocate for these changes as a community	<ul style="list-style-type: none"> <li>Local Disabled People's Organisations</li> <li>Community Climate Action Project</li> </ul>	2	3	3	5  Equality – preventing new barriers  Society – reduced inequalities	5-10 years

# Priorities and actions: Being Prepared as Communities

(Please note, this section was originally called 'resilience' but has been changed to reflect the difficult connotations of the word for some Disabled people. Where appropriate we still reference resilience when it is clear that this refers to communities, rather than pressure being put on individuals.)

Disabled people are two to four times more likely to die in disasters. While some conditions are more susceptible to extreme weather, for example some conditions make modulating temperature during heatwaves difficult, the increased risk for Disabled people is in large part because of the inaccessibility of planning and society.

Despite this:

- 71% of Disabled people do not have an individual preparedness plan for disasters (UNDRR, 2013).
- 13% of Disabled people have no one to help them to evacuate (UNDRR, 2013).
- Only 20% of Disabled people say they would be capable of evacuating immediately in the event of a sudden disaster (UNDRR, 2013).
- Though these statistics come from 2013, the 2023 UNDRR report shows there's been little to no progress.

The safety of the community of Disabled people must be a top priority in disaster planning.

## City owned

### **PRIORITY 1. Disabled people's safety needs to be a top priority in planning for disasters.**

#### **ACTIONS:**

- a. Disabled people's human rights should be protected at all times. Disabled people must never be thought of as the acceptable sacrifice as happened with Covid-19.
- b. Disabled people should be considered a priority group during evacuations. Timelines should recognise the extra time that can be needed to be able to evacuate some Disabled people safely and accessibly.
- c. The Avon Resilience Forum should work with a paid pan-impairment and intersectional group of Disabled people to ensure that Disabled people's needs are met by every step of evacuations. This includes communication, warning systems, evacuation, transport to a place of safety, the stay there and returning home afterwards, and individual and community recovery. This work should include practice evacuations with Disabled people. These practices must be reviewed by the Disabled people taking part and used to make improvements.
- d. Emergency teams must be trained on how to evacuate Disabled people safely and respectfully. This includes evacuating key equipment, which can be essential for day to day living and difficult to replace.
- e. Community places of safety and cool spaces and warm spaces must meet high standards of accessibility. This should include level access, an accessible toilet, a hearing loop, a quiet space that is just for this purpose, accessible seating, places to lie down in the day, accessible lighting, and access to BSL interpreting. Equipment Disabled people might need should be provided. For example, noise-cancelling headphones and sensory toys and back up mobility equipment for when it has been lost or damaged.

## **PRIORITY 1. Disabled people's safety needs to be a top priority in planning for disasters. (continued)**

### **ACTIONS:**

- f. The staff at community places of safety, cool spaces and warm spaces should have a good understanding of disability and how to work with Disabled people. Ideally, this will be supported by training from DPOs.
- g. Community Places of Safety, cool spaces and warm spaces should be within travelable distance for all Disabled people in Bristol. Accessible transport should be on offer to transport Disabled people to and from the venues.
- h. Community Places of Safety, cool spaces and warm spaces should be advertised to Disabled people so that everyone knows where their nearest one is.
- i. Support should be given to Disabled people to enable them to write a personal preparedness plan, evacuation plans, and make their own grab bag. Support should be given to update plans if access needs change. This work should be linked into the services that Disabled people already use, like caregivers, and their family and community.
- j. A clear list of Disabled people who will need support during disasters should be developed and held by emergency services. This should include details of who has a personal preparedness plan.
- k. Services that Disabled people use should work with Disabled people to get them on priority services registers.
- l. Back up energy should be in place for people who have essential power-assisted health equipment to ensure they can be used during power cuts. Research should be done to understand the best way of doing this.

## **PRIORITY 2. Work that is about preparing for disasters as communities should include Disabled people as a key group.**

### **ACTIONS:**

- a. All local community projects should ensure they work with local Disabled people with a range of lived experiences.
- b. Grants and support should be given to disability groups and organisations to ensure that they are resilient, ready for when disasters happen. Funders should ensure that money is being used correctly and offer extra support to these organisations.
- c. Funding should also be given to neighbourhood organisations to carry out community resilience work with local Disabled people. This work should be done by co-production.
- d. Asset-based community development should support the growth of networks of Disabled people who can support each other in difficult times. Enough money should be given for reasonable adjustments. This money should be ring-fenced.
- e. Asset-based community development should also work to build joy, wellbeing and a feeling of being valued for Disabled people. This will help the community stay resilient during times of disaster.
- f. Trees and other cooling projects should be placed in areas where lots of Disabled people live.
- g. Public places that are important for staying safe in heatwaves should have good accessibility. For example parks should always be accessible.
- h. The access chain from Disabled people's homes to these spaces designed for heat resilience should be accessible during hot weather. For example, the route from a Disabled person's house to a park should be accessible to walk or roll along even during heatwaves.

### **PRIORITY 3. Communicate with Disabled people so they understand how to prepare for dangerous weather**

#### **ACTIONS:**

- a. Accessible communication projects should educate Disabled people on the risks of climate change, what they can do to stay safe and what there is in their local community to support them during extreme weather. This should include accessible translations including Easy Read, BSL and audio versions of information. These should also include language translations for areas where lots of people speak languages other than English. Other translations should be made available on request.
- b. Organisations should link up Disabled people to information about being prepared for disasters.
- c. Public meetings about preparing for disasters should have a high standard of accessibility. For example they should be in Plain English and have BSL interpreters.





# Priorities: Being Prepared as Communities

## Scoring of priorities

1 - Very Low, 2 - Low, 3 - Moderate, 4 - High, 5 - Very high/significant

PRIORITY	POTENTIAL COLLABORATORS + STAKEHOLDERS	RESOURCE: COST	RESOURCE: PEOPLE	IMPACT: CARBON	IMPACT: COMMUNITY	TIMESCALE
<p>1. Disabled people's safety needs to be a top priority in planning for disasters</p>	<ul style="list-style-type: none"> <li>• Bristol City Council</li> <li>• West of England Combined Authority</li> <li>• Avon Resilience Forum</li> <li>• NHS</li> <li>• AFRS</li> </ul>	3	4	0	<p>5</p> <p>Protection of life</p> <p>Equality – prevention of new barriers</p> <p>Society – reduced inequalities</p>	3 – 5 years
<p>2. Disabled people's housing to meet the needs of Disabled people as weather gets hotter or cooler</p>	<ul style="list-style-type: none"> <li>• Bristol City Council</li> <li>• West of England Combined Authority</li> <li>• Avon Resilience Forum</li> <li>• Housing Associations</li> <li>• Community housing advice provider[s]</li> <li>• Centre for Sustainable Energy</li> </ul>	4	4	2	<p>5</p> <p>Protection of life</p> <p>Equality – prevention of new barriers</p> <p>Society – reduced inequalities</p>	3 years



# Priorities: Being Prepared as Communities

PRIORITY	POTENTIAL COLLABORATORS + STAKEHOLDERS	RESOURCE: COST	RESOURCE: PEOPLE	IMPACT: CARBON	IMPACT: COMMUNITY	TIMESCALE
<p>3. Work that is about preparing for disasters as communities should include Disabled people as a key group</p>	<ul style="list-style-type: none"> <li>Bristol City Council</li> <li>West of England Combined Authority</li> <li>Avon Resilience Forum</li> <li>Local community organisations</li> </ul>	3	3	0	5  Protection of life  Equality – prevention of new barriers  Society – reduced inequalities	3-5 years
<p>4. Communicate with Disabled people so they understand how to prepare for dangerous weather</p>	<ul style="list-style-type: none"> <li>Bristol City Council</li> <li>West of England Combined Authority</li> <li>Avon Resilience Forum</li> </ul>	2	2	0	5  Protection of life Equality – prevention of new barriers Society – reduced inequalities	1-3 years

# Priorities and actions: Transport



Most communities in Bristol report difficulties and frustration with transport. Disabled people face all these problems and extra access issues on top. Yet transport plays a role in opening up the city and enabling people to access work, shops, services and social connections. So for Disabled people to be involved in other climate action in other areas of work on climate action requires getting transport right.

## City owned

### **PRIORITY 1. Ensure all new transport projects are accessible.**

#### **ACTIONS:**

- a. Work with DPOs and local Disabled people throughout projects - from design to installation and review. Ensure that local Disabled people can easily access all the services they need to, like GPs and shops.
- b. Commitment to accessibility should be written into project contracts. Teams working on these projects must reach out to DPOs and local Disabled people to work on access issues instead of expecting people to come to them.
- c. Ensure roads closed to traffic do not make Disabled people's access worse. Parking for Disabled people should be within 20m.
- d. Blue badge holders, vehicles with a disabled tax class, carers, personal assistants, caregivers, parents of children with a severe disability should have permanent exemptions.
- e. Work with carer organisations and caregivers to ensure that Disabled people can still access affordable care.
- f. In schemes like Clean Air Zones where some people might need to buy new cars, do not charge or stop Disabled people from driving until they can buy a new car.
- g. Make sure car-free areas are made and enforced so that only push bikes and pedestrians can use them.
- h. Have clear visual and audio aides to show which areas are for cars, which are for push bikes and e-scooters, and which areas are for pedestrians only.

### **PRIORITY 2. Make public transport more accessible.**

#### **ACTIONS:**

- a. Have more bus routes, with more regular and reliable buses. Buses should run later into the evening. Areas with lots of social housing should always have good bus routes.
- b. Have at least two wheelchair spaces on all buses and priority seating for other Disabled, older and pregnant people.
- c. Disabled people's bus passes should be valid 24/7 for the long term.
- d. Improve the accessibility of bus stops and railway stations. For example, ensure there is seating and enough covered space for all Disabled people, including wheelchair users. Bus stops should be usable in all types of weather. The shelters should be made from materials that don't overheat.
- e. Ensure that train stations have ramp access on both sides and that there is no gap between the train and platform.
- f. Ensure that all buses have ramps.
- g. Improve the accessibility of information. This includes online, at bus stops and trains stations, and on buses. For example, all buses should have screens with the journey information and announcements of bus stops. Announcements should always be on to meet access needs.



# Priorities and actions: Transport

## **PRIORITY 2. Make public transport more accessible. (continued)**

### **ACTIONS:**

- h. Improve accessibility training for public transport staff. This should always include the correct working of ramps. The training should be given by a Disabled person.
- i. Bus scheduling should allow enough time for passengers to sit down before buses drive off.
- j. Offer easier ways for reporting ableist and disablist behaviour by public transport staff. Display this information on buses, bus stops and company websites and flyers.
- k. Improve action against staff and members of the public who discriminate and commit hate crime. Report back to the person who has experienced the problem so they know what action has been taken and can ask for more serious action if needed.
- l. Before bus routes are stopped, local Disabled people should be consulted to understand the impact.
- m. All local public transport organisations should have in their training and policies that priority for space and seats should be given to wheelchair users. Policies should say that other passengers should be moved from these spaces and it is the responsibility of bus drivers to make this happen.
- n. Public transport vehicles should be maintained to make sure they stay accessible. For example, ensuring ramps are working and stopping unnecessary noise that could cause sensory issues.
- o. Bus lanes should be maintained to ensure the journey is smooth and to stop pain and discomfort that can be caused by issues like potholes.
- p. There should be different kinds of passes and discounts that make it easy and affordable to make a journey using different types of transport for each part. For example using a bus and a scooter in one trip.
- q. Get rid of floating bus stops. These are dangerous for some Disabled people using buses.

## **PRIORITY 3. Ensure Disabled people can travel more by walking and wheelchair by making pavements better.**

### **ACTIONS:**

- a. Pavements should be smooth and of an even camber.
- b. Pavements should be free of blockages and trip hazards. For example, overgrown bushes, recycling bins, tree roots, building work and recycling bins.
- c. Train bin and recycling collection teams so that they understand how to return bins in way that doesn't block pavements.
- d. Ensure that there are enough dropped kerbs and that these meet standards on gradients. All dropped kerbs should have double yellow lines so that cars don't block them
- e. Ensure that tree planting in streets doesn't make the quality of pavements bumpy, or make them too narrow or difficult to travel around.
- f. Ensure that rules about keeping e-scooters, cyclists, vans and cars off pavements and dropped kerbs are followed and enforced. Breaking these rules should be met with fines. Members of the public should be given ways to report pavement parking and incorrectly parked scooters.



# Priorities and actions: Transport

## **PRIORITY 3. Ensure Disabled people can travel more by walking and wheelchair by making pavements better.**

### **ACTIONS:**

- g. E-scooter parking spaces should be off the pavement in parking docks.
- h. E-scooters and e-cars should make a sound so people know they are coming.
- i. Accessible e-scooters, trikes and bikes should be available and easy to access. Their hire app should also be accessible and easy to use.
- j. Create public awareness campaigns and schemes to make the public aware of how their actions could be making pavements inaccessible for Disabled people. For example, when parking an e-scooter, the app should tell people how to park the e-scooter in a way that won't make barriers.
- k. Prevent businesses from putting tables and chairs on pavements where there is not enough room for wheelchairs to pass. Separate the seating area from the area for pedestrians by using solid objects like railings.
- l. Get rid of shared pathways and make separate and safe cycle paths so cyclists don't need to cycle on pavements.
- m. Install charging points for wheelchairs and mobility scooters across the city. For example at mobility hubs or on public transport.
- n. Loading bays should only be used at specific times and this should be enforced.

## **PRIORITY 4. Ensure Disabled people who have to drive can still do so. Support these people to drive in a way cars that produce as small emissions and pollution as possible.**

### **ACTIONS:**

- a. Disabled people should be given adequate funding support to buy electric vehicles and adapt them. For example, when big projects like Clean Air Zones are introduced, funds should be written into the project to support Disabled people to access an electric car that meets their needs.
- b. Electric car charging points should be accessible.
- c. More Disabled parking bays should be added to the city centre and high streets. This will mean people drive less far and support local businesses. Their use should be enforced so that non-disabled people don't use them.
- d. Allow blue badge holders, vehicles with a disabled tax class, carers, personal assistants, caregivers, parents of children with a severe disability to use bus gates.

## **PRIORITY 5. Ensure Disabled people can drive less by opening accessible public toilets and changing spaces across the city.**



# Priorities and actions: Transport

## **PRIORITY 6. Ensure the Disabled people who want to cycle can have an accessible experience.**

### **ACTIONS:**

- a. Ensure bike hire places offer some trikes and recumbent bikes at an affordable price.
- b. Bike lanes should be accessible. This includes being step free, wide and smooth enough for trikes and less confident cyclists, all gates and bollards used should be accessible for Disabled people.
- c. Offer bike grants to Disabled people who need to buy or adapt an accessible bike.
- d. Bike parking should be close to buildings. Make sure the parking has accessible options. For example, for people who don't have strength to lift their bikes and for people who have adapted bikes and trikes.
- e. Ensure public transport staff understand that they need to accommodate putting ramps down for Disabled cyclists when asked for.
- f. Offer charging stations in public places for adapted bikes and trikes.

## **PRIORITY 7. Ensure that taxis in Bristol meet the needs of Disabled people.**

### **ACTIONS:**

- a. Taxi drivers should be trained in accessibility. This training should be given by Disabled people.
- b. Ensure taxi drivers know not to use a blue badge when there's not a Disabled person in the taxi. This should be enforced.
- c. Encourage and support taxi companies to provide some accessible taxis.

## **PRIORITY 8. Ensure Disabled people can drive less by making sure affordable mobility equipment-hire is available for those who need it (e.g. by supporting Bristol Shopmobility).**

## **Community owned**

The Community Climate Action Project employed an inclusive transport advocate to champion the aims in this section. The priorities were also fed into the Community Climate Action Project's [Inclusive Transport Vision](#).



# Priorities: Transport

## Scoring of priorities

1 - Very Low, 2 - Low, 3 - Moderate, 4 - High, 5 - Very high/significant

PRIORITY	POTENTIAL COLLABORATORS + STAKEHOLDERS	RESOURCE: COST	RESOURCE: PEOPLE	IMPACT: CARBON	IMPACT: COMMUNITY	TIMESCALE
1. Ensure all new transport projects are accessible	<ul style="list-style-type: none"> <li>Bristol City Council</li> <li>West of England Combined Authority</li> <li>First Bus</li> <li>Various community groups focused on transport</li> </ul>	3	3	5 Reduced private car travel and a comparable increase in active and public transport	5 Society – reduced inequalities  Health & wellbeing- reduced air pollution	1-3 years
2. Make public transport more accessible	<ul style="list-style-type: none"> <li>Bristol City Council</li> <li>West of England Combined Authority</li> <li>First Bus</li> <li>Metrobus</li> <li>GWR</li> <li>Local stations</li> <li>Various community groups focused on transport</li> </ul>	3	3	5 Reduced private car travel and a comparable increase in active and public transport	5 Society – reduced inequalities  Health & wellbeing- reduced air pollution	3 – 5 years
3. Ensure Disabled people can travel more by walking and wheelchair by making pavements better	<ul style="list-style-type: none"> <li>West of England Combined Authority</li> <li>Bristol City Council</li> <li>Various community groups focused on transport</li> </ul>	4	4	4 Reduction in petrol and diesel cars on road	4 Health & wellbeing- opportunities for physical activity  Society – reduced inequalities  Health & wellbeing- reduced air pollution	5 – 10 years



# Priorities: Transport

## Scoring of priorities

1 - Very Low, 2 - Low, 3 - Moderate, 4 - High, 5 - Very high/significant

PRIORITY	POTENTIAL COLLABORATORS + STAKEHOLDERS	RESOURCE: COST	RESOURCE: PEOPLE	IMPACT: CARBON	IMPACT: COMMUNITY	TIMESCALE
4. Ensure Disabled people who have to drive can still do so. Support these people to drive in a way that is as good for the planet as possible	<ul style="list-style-type: none"> <li>West of England Combined Authority</li> <li>Bristol City Council</li> <li>Motability</li> <li>Department for Work and Pensions</li> <li>Various community groups focused on transport</li> </ul>	4	2	2 Reduction in petrol and diesel cars on the road	5 Equality – preventing new barriers  Society – reduced inequalities  Health & wellbeing- reduced air pollution	1-5 years
5. Ensure Disabled people can drive less by opening accessible public toilets and changing Spaces across the city	<ul style="list-style-type: none"> <li>Bristol City Council</li> <li>Various other community groups campaigning for more public toilets</li> </ul>	3	2	3 Reduced private car travel and a comparable increase in active and public transport	3 Health & wellbeing- opportunities for physical activity  Society – reduced inequalities	3 – 5 years
6. Ensure the Disabled people who want to cycle can have an accessible experience	<ul style="list-style-type: none"> <li>Bristol City Council</li> <li>West of England Combined Authority</li> <li>Sustrans</li> </ul>	3	2	3	3 Equality – Equal access  Health & wellbeing	3 – 5 years



# Priorities: Transport

## Scoring of priorities

1 - Very Low, 2 - Low, 3 - Moderate, 4 - High, 5 - Very high/significant

PRIORITY	POTENTIAL COLLABORATORS + STAKEHOLDERS	RESOURCE: COST	RESOURCE: PEOPLE	IMPACT: CARBON	IMPACT: COMMUNITY	TIMESCALE
<p>7. Ensure that taxis in Bristol meet the needs of Disabled people</p>	<ul style="list-style-type: none"> <li>Bristol City Council</li> <li>West of England Combined Authority</li> </ul>	3	2	0	<p>3</p> <p>Equality – preventing new barriers</p> <p>Society – reduced inequalities</p>	3-5 years
<p>8. Ensure Disabled people can drive less by making sure affordable mobility equipment-hire is available for those who need it (e.g. by supporting Bristol Shopmobility)</p>	<ul style="list-style-type: none"> <li>Bristol City Council</li> <li>Bristol Shopmobility</li> <li>Local shopping centres and venues</li> </ul>	3	2	<p>2</p> <p>Reduced private car travel and a comparable increase in active and public</p>	<p>3</p> <p>Equality – Equal access</p> <p>Health &amp; wellbeing– opportunities for physical activity</p> <p>Health &amp; wellbeing– reduced air pollution</p>	3 – 5 years



# Priorities and Actions: Food

Disabled people are disproportionately affected by food insecurity. A 2022 Food Foundation report found that Disabled people are five times more likely to experience food poverty. Meanwhile, shops are often falling short on access needs. Projects are needed to enable Disabled people to access affordable and sustainable food that meets their needs.

## City owned

### **PRIORITY 1. Support Disabled people to source accessible and affordable food that is good for the planet.**

#### **ACTIONS:**

- a. Food projects should understand that they might not always be a viable option for some people's conditions, impairments or living situation. Where there are gaps, they should consider how to meet the needs of these people with other schemes.
- b. Community meals should be as accessible as possible. For example, they should be held in accessible venues and this should be made clear when advertising. Information about the menu and ingredients should be shared ahead of time so that people can feel confident that they will be able to take part.
- c. Food projects should offer delivery for people who can't access it in person.
- d. Food projects should make sure to advertise their work to Disabled people who need them most. They should also do outreach to build confidence and so people understand that they can join in. For example, more Deaf people will join food clubs if other members of their community encourage them to go along.
- e. There should be the option to pack up and take away food. This means Disabled people can take part but wait to eat until they are at home. This is important for the health and comfort of some Disabled people.
- f. Carers and other services for Disabled people should inform people about food projects as part of their role.
- g. Supermarkets and other shops that sell food must be accessible for all Disabled people. For example making sure that wheelchair users can reach all the shelves and self-check outs are accessible. Sustainable food should be put in one of the most accessible places within the shop.
- h. Work in this area must understand that many Disabled people experience poverty so there should always be affordable options. For example businesses could have pay-it forward schemes so that people with money can choose to pay extra to help Disabled people to access sustainable food.
- i. Food that would go to waste should be shared with Disabled people. For example, allotment surplus could be given to local Disabled people. This would be particularly helpful if people can request for food to be delivered pre-cut to save on personal assistant costs.
- j. Community fridges in accessible venues can be used to share food that would go to waste.
- k. Food should be clearly labelled with ingredients so that people with intolerances can know it's safe for them. This includes small and locally grown produce.

# Priorities and Actions: Food



## **PRIORITY 2. Changes to food should be accessible and not make difficulties for anyone's medical or mobility needs.**

### **ACTIONS:**

- a. Make sure that food options remain open, allowing people with dietary needs, allergies, eating disorders/disordered eating and cultural needs to find food that meets their needs. For example, people who need food that is already peeled or chopped up should still be able to access it even when businesses are using less packaging.
- b. Conversations and projects on food should raise public awareness around access needs so that Disabled people aren't punished for using options that some people might think of as wasteful, such as plastic straws and ready-peeled food.
- c. Projects that provide low or no cost home delivery of accessible zero waste food should be encouraged.
- d. Where action can be taken to make packaging more accessible and sustainable, this should be taken.
- e. Community organisations should link local people up who can and would like to cook together. For example, some people with energy limiting conditions would find it helpful and enjoyable to cook for each other.
- f. Food projects should support the sharing of different experiences and recipes for the community of Disabled people. This will grow people's understanding of accessible, sustainable and affordable options.
- g. Disabled people's living situations often require them to buy smaller portions. Buying in smaller amounts shouldn't cost more. This should be the case for the cost of the food and the delivery.

## **PRIORITY 3. Support Disabled people to grow their own food.**

### **ACTIONS:**

- a. Some Disabled people won't be able to or want to grow their own food even with support. Disabled people who could and want to should be given the access and support to do so.
- b. Every allotment site should make at least 10% of their allotments accessible for Disabled people. This includes accessing the site from the entrance.
- c. Food growing projects should include Disabled people who don't have gardens and can't join community growing projects. For example, window boxes could be given to Disabled people who want one or there could be community food growing in parks.

## **Community owned**

The Climate and Disability programme commissioned Redcatch Community Garden to run cookery and growing lessons for Disabled people. The frozen meals they make are being given to Disabled people in their local community.



# Priorities: Food

## Scoring of priorities

1 - Very Low, 2 - Low, 3 - Moderate, 4 - High, 5 - Very high/significant

PRIORITY	POTENTIAL COLLABORATORS + STAKEHOLDERS	RESOURCE: COST	IMPACT: CARBON	IMPACT: COMMUNITY BENEFITS	RESOURCE: PEOPLE	TIMESCALE
1. Support Disabled people to source accessible and affordable food that is good for the planet	<ul style="list-style-type: none"> <li>Bristol City Council</li> <li>Feeding Bristol</li> </ul>	3	4	3 Altered dietary patterns & reduced food waste Less demand on shop bought edibles	4 Equalities – Equal access Equalities – Prevent creation of barriers Resilience - food security (security in local food supply)	3-5 years
2. Changes to food should be accessible and not make difficulties for anyone's medical or mobility needs	<ul style="list-style-type: none"> <li>Bristol City Council</li> <li>Feeding Bristol</li> </ul>	2	1	2	4 Equalities – Equal access Equalities – Prevent creation of barriers Resilience - food security (security in local food supply)	3-5 years
3. Support Disabled people to grow their own food	<ul style="list-style-type: none"> <li>Bristol City Council</li> <li>Bristol allotment sites</li> <li>Bristol Disability Equality Forum</li> </ul>	3	3	3 Altered dietary patterns & reduced food waste Less demand on shop bought edibles	4 Equalities – Equal access Equalities - food security - Green skills	3-5 years



# Priorities and Actions: Nature

Access to nature is vital for both wellbeing and heat resilience. Green and blue spaces should be made more accessible. Bristol charity Your Park estimates that a third of Bristol and Bath's population are shut out of or struggling to access parks, with Disabled people being one of the biggest demographics affected by this. Essential work is needed to improve access.

## City owned

### **PRIORITY 1. Green and blue spaces should be made more accessible.**

#### **ACTIONS:**

- a. Accessibility should include the access chain of getting to, getting inside and using a space. This includes physical access, bus routes to parks, safety, information, toilets, play spaces for everyone, parking and accessible paths, benches, water fountains, and shelters. We can't cover the full detail in this plan but the charity Your Park's 'Not Just a Checkbox' report should be read for more detail.
- b. Support should be given to projects and organisations doing this work. Organisations working together should be encouraged.
- c. There should be accessible nature spaces in Bristol that give a variety of experiences. For example, there should be an accessible local wood.
- d. Disabled people should be supported to understand that nature spaces are for them and to be given the confidence to access them.
- e. When housing is built on parks and nature spaces the planning should make sure that Disabled people in the area still have accessible nature spaces close to them.

### **PRIORITY 2. There should be an equality of experience for Disabled people in nature.**

#### **ACTIONS:**

- a. Disabled people should be allowed to get up close to nature and feel part of it. For example, accessible paths should allow Disabled people to go right up to flowers and trees.
- b. Nature volunteering experiences should welcome Disabled people. There should be a variety of ways that different people with different access needs can join in. For example, Friends of groups should support Disabled people to volunteer in parks. Disabled people should be trusted to know what they can do and can't do. They should only be given disability related volunteering if they want that. Reasonable adjustments should always be put in place.
- c. Not all Disabled people are able to travel to nature spaces. So nature should be introduced into streets and places Disabled people already visit. For example at health centres and supermarket car parks. This will also help with mental health and heat resilience.
- d. Communities and the local councils should organise volunteers to help look after the gardens of Disabled people. This work should be done in a way that promotes heat resilience and biodiversity.

### **PRIORITY 3. Consider the needs of Disabled people when designing nature spaces for heat resilience. For example, the accessibility of journeys to parks.**



# Priorities and Actions: Nature

**PRIORITY 4. Action should be taken to make Bristol's air cleaner. This should be done in a way that is accessible and fair for all communities.**

**ACTIONS:**

- a. The Clean Air Zone should be accessible and fair for all communities. Support should be given for people to get Blue Badges. Exemptions should be given to vehicles with a disabled tax class, carers, caregivers, personal assistants, caregivers, children with a severe disability. Accessibility of these schemes also includes improving public transport and active transport in the area.
- b. The city should move towards using fewer wood burning stoves, but only once those using them because of energy poverty have affordable and accessible heating.
- c. Projects to lower the number of cars on the road should be put into place but these should always allow Disabled people access. For example Liveable Neighbourhoods should ensure Disabled people can still drive to their homes and the shops, and park nearby. These projects should be designed with local Disabled people.
- d. There should be more Blue Badge parking close to shops and services.

## Community owned

The Climate and Disability programme has commissioned Redcatch Community Garden to run growing lessons for Disabled people to get them into nature. Some of these lessons are about growing plants that improve air quality.



# Priorities: Nature

## Scoring of priorities

1 - Very Low, 2 - Low, 3 - Moderate, 4 - High, 5 - Very high/significant

PRIORITY	POTENTIAL COLLABORATORS + STAKEHOLDERS	RESOURCE: COST	RESOURCE: PEOPLE	IMPACT: CARBON	IMPACT: COMMUNITY	TIMESCALE
1. Green and blue spaces should be made more accessible	<ul style="list-style-type: none"> <li>Bristol City Council</li> <li>Your Park</li> <li>Avon Wildlife Trust</li> <li>Friends of the Earth</li> </ul>	3	3	2	5 Equal access Protection of life	3-5 years
2. There should be an equality of experience for Disabled people in nature	<ul style="list-style-type: none"> <li>Bristol City Council</li> <li>Your Park</li> <li>Avon Wildlife Trust</li> <li>Friends of the Earth</li> </ul>	3	2	0	3 Equal access Health and wellbeing Community building	3-5 years
3. Consider the needs of Disabled people when designing nature spaces for heat resilience. For example, the accessibility of journeys to parks	<ul style="list-style-type: none"> <li>Bristol City Council</li> <li>West of England Combined Authority</li> </ul>	3	3	2	5 Equal access Protection of life	3-5 years
4. Action should be taken to make Bristol's air cleaner. This should be done in a way that is accessible and fair for all communities	<ul style="list-style-type: none"> <li>Bristol City Council</li> <li>West of England Combined Authority</li> <li>First Bus</li> </ul>	3	3	4	5 Equal access Protection of life	5 years



# Priorities and Actions: Waste and Resources

Some of the most high-profile forms of eco-ablism by the environmental movement have been shaming people for creating waste around single use items, such as plastic straws, that are important for the access needs of some Disabled people.

Waste is a tricky issue for the community of Disabled people as they face both lack of support to dispose of items sustainably and increased reliance on some items that are considered unsustainable. Disabled people should not be punished or judged for using items they have to for their independence, health and wellbeing. Instead, system changes and research should find accessible alternatives that Disabled people can be part of.

## City owned

### **PRIORITY 1. Disabled people should not be punished or judged for using things they have to.**

#### **ACTIONS:**

- a. Campaigns about lowering waste should be written so that they don't judge or blame Disabled people for using things that are unsustainable. Disabled people often don't have the choice not to use these things. For example, some Disabled people have to use medicines and health items that are wrapped in or made of plastic to stay well. These people shouldn't be made to feel guilty when they don't have a choice.
- b. People working on these issues should educate themselves about the needs of Disabled people so that they don't judge or punish Disabled people by mistake. This education should take place before planning projects and campaigns. They should work with Disabled people.

### **PRIORITY 2. Ensure assistive equipment and medical equipment doesn't go to waste.**

#### **ACTIONS:**

- a. Offer free training and support for Disabled people to be able to fix their own equipment.
- b. The NHS should collect and reuse equipment that is no longer needed. Where equipment can't be reused it should be recycled.
- c. Accessible options should be created for disposal of single-use medical items such as blister packs or hearing aid batteries. For example carers could take these to pharmacies for recycling.
- d. Libraries of Things should have equipment Disabled people need like mobility aids. This will allow Disabled people to borrow this equipment like a library lends out books.



# Priorities and Actions: Waste and Resources

## **PRIORITY 3. Ensure that recycling and waste is accessible for all Disabled people.**

### **ACTIONS:**

- a. Disabled people for whom recycling is inaccessible should be given support to do it. This includes all access needs, not just mobility. For example, support for people who might not have energy to do recycling. Details about how to use this service should be shared widely and made accessible. When carers and councils fail to do this properly community organisations should set up 'bin buddy' schemes, where neighbours support Disabled people in their street to recycle.
- b. When there are changes to services, for example lowering the frequency of waste collection, accommodations must be put in place so that this doesn't become unpleasant for Disabled people who have hygiene waste. For example, people shouldn't have to have incontinence pads smelling in the bins for a long time.
- c. When there are changes to services these should be clearly communicated. It should be easy to contact someone to talk about the changes. Direct contact should be made with Disabled people who could find the changes difficult.
- d. Social housing should have bins in blocks of flats. These should be designed with Disabled people to ensure accessibility.
- e. Soft plastic should be collected with other household recycling so Disabled people don't have to carry it to supermarkets.
- f. Disabled people who are unable to use reuse and recycling centre should be able to have their rubbish collected from home for free.
- g. Reuse and recycling centre should have people on hand to help people unload.
- h. People with Blue Badges should be able to visit the reuse and recycling centre without a booking.
- i. Permits should not be needed for wheelchair accessible vehicles to visit the reuse and recycling centre even if they are bigger than the 1.52 metres rule.

## **PRIORITY 4. Ensure that recycling and waste doesn't make barriers for Disabled people.**

### **ACTIONS:**

- a. Educate the public on how to put their recycling and waste bins out so they don't block pavements in ways that are difficult or dangerous for Disabled people.
- b. Train bin people how to put back recycling and waste bins so they aren't difficult or dangerous for Disabled people. Make sure they are given enough time to do this properly when they are doing the work.
- c. When repeated blocking of pavements is reported to the council this should be followed up with serious action. For example warnings or fines.



# Priorities: Waste and Resources

## Scoring of priorities

1 - Very Low, 2 - Low, 3 - Moderate, 4 - High, 5 - Very high/significant

PRIORITY	POTENTIAL COLLABORATORS + STAKEHOLDERS	RESOURCE: COST	RESOURCE: PEOPLE	IMPACT: CARBON	IMPACT: COMMUNITY	TIMESCALE
<p>1. Disabled people should not be punished or judged for using things they have to</p>	<ul style="list-style-type: none"> <li>Bristol City Council</li> <li>UK Government</li> <li>Public</li> <li>UK and local press</li> </ul>	2	1	1	<p>4</p> <p>Society - reduced inequalities</p> <p>Society - high level decision makers influenced</p> <p>Equalities – prevent the creation of new barriers</p>	5 years
<p>2. Ensure assistive equipment and medical equipment doesn't go to waste</p>	<ul style="list-style-type: none"> <li>NHS</li> <li>Bristol City Council</li> <li>Bristol Waste</li> </ul>	2	3	<p>5</p> <p>Reduce items going to landfill</p> <p>Hugely altered consumption patterns, buying less and re-using/repairing more</p>	<p>4</p> <p>Society - reduced inequalities</p> <p>Equalities – prevent the creation of new barriers</p>	5 years



# Priorities: Waste and Resources

## Scoring of priorities

1 - Very Low, 2 - Low, 3 - Moderate, 4 - High, 5 - Very high/significant

PRIORITY	POTENTIAL COLLABORATORS + STAKEHOLDERS	RESOURCE: COST	RESOURCE: PEOPLE	IMPACT: CARBON	IMPACT: COMMUNITY	TIMESCALE
<p>3. Ensure that recycling and waste is accessible for all Disabled people</p>	<ul style="list-style-type: none"> <li>Bristol City Council</li> <li>Bristol Waste</li> </ul>	4	3	<p>4</p> <p>Reduce items going to landfill</p> <p>Hugely altered consumption patterns</p>	<p>4</p> <p>Society - reduced inequalities</p> <p>Equalities – prevent the creation of new barriers</p>	3 years
<p>4. Ensure that recycling and waste doesn't make barriers for Disabled people</p>	<ul style="list-style-type: none"> <li>Bristol City Council</li> <li>Bristol Waste</li> <li>National Government</li> <li>UK and local press</li> </ul>	2	3	1	<p>4</p> <p>Society - reduced inequalities</p> <p>Equalities – prevent the creation of new barriers</p>	3 years



# Priorities and Actions: Energy

Disabled people disproportionately experience fuel poverty. Scope research found that Disabled households spent 8% of their budget on energy compared to 6% for non-disabled households - an extra £634 a year. 8% had problems paying utility bills. Sustainable energy and retrofit measures can help to lower these bills for Disabled households but only if the work is carried out in an accessible way and the technology meets the needs of the individual.

## City owned

### **PRIORITY 1. Energy advice and support should be accessible and think about different access needs.**

#### **ACTIONS:**

- a. All energy organisations should think about Disabled people as one of the most important communities to talk to and support. Often many of the people these organisations support are Disabled people but this isn't acknowledged.
- b. Advice about energy should be truthful about the problems some technology can make for some Disabled people. For example, heat pumps can be ineffective at the temperatures some Disabled people need for their health. Ideas of how to solve the problems should be given.
- c. Energy projects should think about the extra access needs people might have and include accessible examples. For example, when making an accessible demonstration home.
- d. One stop shops and energy champions should be trained in accessibility. Energy champions should actively reach out to the most disadvantaged Disabled people instead of expecting these people to find them.
- e. Disabled people should be supported throughout the energy changes to their homes, from the beginning to end of the work.
- f. Changes to energy in the home should be made so that the Disabled person can have full control, where this is possible with their impairment. For example, switches, controls and fuse boxes should be installed where Disabled people can reach them instead of assuming that a caregiver will manage this.
- g. Where possible, there should be the option to carry out energy work at the same time as other support being given to Disabled people. For example, social workers should be given training so they can support energy needs. This should be done in a light touch way.

### **PRIORITY 2. The use of new technologies should bear in mind different access needs.**

#### **ACTIONS:**

- a. When using new energy technology all different access needs should be thought about. For example, smart meters should be designed to be accessible for people with sight impairments.
- b. When choosing energy technologies for public spaces accessible options must be chosen. For example, LED lights flickering can cause discomfort for some Disabled people and make spaces inaccessible.
- c. New city-wide energy systems, like heat networks, should be accessible. Communication campaigns must be easy to understand. Project roll out should have a simple single point of contact to deal with any issues.



# Priorities and Actions: Energy

**PRIORITY 3. Energy funding should be designed for Disabled people and prioritise them as an important community.**

**ACTIONS:**

- a. Where possible, influence and power should be used to make changes so that Disabled people shouldn't have to pay for the extra energy costs that come from being disabled. For example, encouraging the UK Government to make new grants and to support Universal Basic Income.
- b. The extra energy costs from greater use of energy to live safely in hot or cold weather should be considered when deciding who to prioritise for energy projects and grants.

## Community owned

The Climate and Disability programme commissioned the Centre for Sustainable Energy to research how to make the retrofitting of houses accessible.





# Priorities: Energy

## Scoring of priorities

1 - Very Low, 2 - Low, 3 - Moderate, 4 - High, 5 - Very high/significant

PRIORITY	POTENTIAL COLLABORATORS + STAKEHOLDERS	RESOURCE: COST	RESOURCE: PEOPLE	IMPACT: CARBON	IMPACT: COMMUNITY	TIMESCALE
<p>1. Energy advice and support should be accessible and think about different access needs</p>	<ul style="list-style-type: none"> <li>• Bristol City Council</li> <li>• Bristol Energy Network</li> <li>• Centre for Sustainable Energy</li> <li>• One Stop Shops</li> <li>• Bristol Green Doors</li> <li>• Bristol Energy Cooperative</li> <li>• The CHEESE Project</li> </ul>	2	2	5	<p>5</p> <p>Equality – prevention of new barriers</p> <p>Society – reduced inequalities</p>	1 – 3 years
<p>2. The use of new technologies should bear in mind different access needs</p>	<ul style="list-style-type: none"> <li>• Bristol City Council</li> <li>• City Leap</li> <li>• Centre for Sustainable Energy</li> <li>• Local universities</li> </ul>	2	3	4	<p>5</p> <p>Equality – prevention of new barriers</p> <p>Society – reduced inequalities</p>	3-5 years
<p>3. Energy funding should be designed for Disabled people and prioritize them as an important community</p>	<ul style="list-style-type: none"> <li>• Bristol City Council</li> <li>• National Government</li> <li>• Centre for Sustainable Energy</li> <li>• City Leap</li> <li>• Bristol Energy Network</li> </ul>		2	4	<p>5</p> <p>Equality – prevention of new barriers</p> <p>Society – reduced inequalities</p>	



# Priorities and Actions: Business and Skills

In 2024 53.1% of Disabled people were in employment compared to 81.6% for non-disabled people. Exclusion from work has severe knock on effects that damage the independence, wellbeing and health of Disabled people. If the green jobs created around action on climate and nature are created in an accessible way they could play an important role in closing the disability employment gap, as well as embedding Disabled people throughout the environment sector, which would also facilitate the knowledge of importance of accessibility to be embedded within the sector's work.

## City owned

### **PRIORITY 1. Make sure that Disabled people are a priority community to get jobs that are made to act on climate change.**

#### **ACTIONS:**

- a. Work with recruiters, job creators, trainers, and communities to get rid of barriers and help disabled people to access meaningful jobs that are created around climate change. For example, recruitment processes should be simpler and more accessible.
- b. Offer Disabled people accessible training and teaching in the skills needed to get these jobs.
- c. Work to ensure Disabled people are also able to stay in these jobs long term. Make the jobs and workplaces accessible and ensure that reasonable adjustments are made throughout people's whole working life.
- d. Work to get Disabled people into roles all through organisations, including top roles. These shouldn't be tokenistic roles but meaningful promotion of Disabled people so there is good representation at every level.
- e. Make and share resources with examples of best practice in job creation, hiring and keeping Disabled people in jobs.
- f. Larger organisations should make their policies on paying access workers better.
- g. Job centre staff should be trained on how to support Disabled people. This should include on supporting mental health needs.
- h. A local accessible green jobs forum should be made. It should push for best practice in jobs. It should be made up of Disabled people and people with power.
- i. The West of England Mayoral Combined Authority Good Employment Charter should work with Disabled people to update the charter through co-production. Improvements should work to remove barriers and discrimination faced by Disabled people in employment. It should find a way to more meaningfully encourage companies to become more accessible that isn't a tick box exercise and collect good examples of best practice.
- j. The West of England Mayoral Combined Authority should use local organisations to support Disabled people into work. Local organisations will understand the local context better.
- k. Local government, Disabled People's Organisations and disability organisations should lobby government to make Access to Work better. For example to change the scheme so that employers should have to do the work to get support instead of Disabled people.
- l. Local government, Disabled People's Organisations and disability organisations should lobby government to stop disability cuts. Cuts to schemes like Personal Independence Payments make it harder for Disabled people to access and stay in work.
- m. Offer help for Disabled people to setup and run their own sustainable businesses.



# Priorities and Actions: Business and Skills

## **PRIORITY 2. Value the work of Disabled people including voluntary work.**

### **ACTIONS:**

- a. Reimagine what work means. Support Disabled people to be able to make a difference in their community and society whether or not they have a job.
- b. Understand that Disabled people sharing lived experience and expertise is a valuable offering and work. Pay Disabled people for their input.
- c. Where money payment isn't possible, value this work by giving something back. For example, shopping vouchers, training or food.
- d. Local government, Disabled People's Organisations and disability organisations should lobby government to change rules around benefits so that Disabled people don't risk losing benefits for volunteering.

## **PRIORITY 3. Educate Disabled people about climate change.**

### **ACTIONS:**

- a. Climate change should be taught to children from the start of their education up until university. Make sure that these lessons are accessible with pictures, jargon-free Plain English and videos. Make it interesting and include fun parts.
- b. Climate change education should be designed to meet the needs and interests of different types of Disabled people. This covers not only accessible translations but the type of content. For example people with learning disabilities will be more interested in a class that is designed for them than one that is just translated into Easy Read.



# Priorities: Business and Skills

## Scoring of priorities

1 - Very Low, 2 - Low, 3 - Moderate, 4 - High, 5 - Very high/significant

PRIORITY	POTENTIAL COLLABORATORS + STAKEHOLDERS	RESOURCE: COST	RESOURCE: PEOPLE	IMPACT: CARBON	IMPACT: COMMUNITY	TIMESCALE
<p>1. Make sure that Disabled people are a priority community to get jobs that are made to act on climate change</p>	<ul style="list-style-type: none"> <li>• Bristol City Council</li> <li>• West of England Combined Authority</li> <li>• Voscur</li> <li>• National government</li> <li>• UK and local press</li> <li>• Local universities</li> </ul>	3	3	3	<p>5</p> <p>Society - reduced inequalities</p> <p>Equalities – prevent the creation of new barriers</p>	5 years
<p>2. Value the work of Disabled people including voluntary work</p>	<ul style="list-style-type: none"> <li>• Bristol City Council</li> <li>• West of England Combined Authority</li> <li>• Voscur</li> <li>• National government</li> <li>• UK and local press</li> </ul>	2	1	1	<p>4</p> <p>Society - reduced inequalities</p> <p>Equalities – prevent the creation of new barriers</p>	3 years
<p>3. Educate Disabled people about climate change</p>	<ul style="list-style-type: none"> <li>• Bristol City Council</li> <li>• WECA</li> <li>• Government</li> <li>• UK and local press</li> <li>• UWE Bristol</li> <li>• University of Bristol</li> <li>• NEU</li> <li>• CJERN</li> </ul>	3	2	4	<p>4</p> <p>Society - reduced inequalities</p> <p>Equalities – prevent the creation of new barriers</p>	5 years



# Priorities and Actions: Homes and Buildings

Lack of accessible housing stock is a priority issue for many Disabled people. When a Disabled person doesn't have the access to housing this causes large knock-on effects to their independence and ability to take part in society. Faced by these immediate concerns, few people have capacity to take part in climate action.

## City owned

### **PRIORITY 1. Ensure all new homes are at least partly accessible.**

#### **ACTIONS:**

- a. 25% of all new homes should meet wheelchair user standard and 90% should meet accessible and adaptable standard under the current building regulations, including visitable standard.
- b. Build all new homes in ways that lower the cost of, and waste created by, adapting them.
- c. Accessible features should be built into social housing from the start and not removed unless they contradict the access needs of the person currently living there.

### **PRIORITY 2. Private, rented and social housing should be protected against disasters. It should also be energy efficient.**

#### **ACTIONS:**

- a. The council has a duty of care to make sure that Disabled people live in safe places. So housing, and social housing in particular, shouldn't be built on flood plains.
- b. Retrofit the homes of Disabled people. Grants for this work to be given first to Disabled people experiencing financial insecurity.
- c. Ensure these grants are advertised in an accessible way.
- d. An accessible green energy demonstration should be created to inspire Disabled people.
- e. Disabled Facilities Grants should be funded properly. Funds should be available for climate change related adaptations. For example, they should be able to be used for retrofitting.
- f. Financial support should be given to lower income disabled households to support with flood insurance when living in flood risk areas. Social housing providers and private landlords must put insurance in place for tenants.
- g. Accessible housing within areas at risk of flooding, storms and heat waves should be mapped and prioritized for improvement. Relocation areas should be identified. Access to key facilities and services should be ensured when relocation must take place.
- h. Buildings should have plans for fixing key features like lifts quickly so Disabled people aren't trapped in or out of their flat. As climate change gets worse, these are likely to break more often.
- i. Landlords must be responsible for making changes on behalf of Disabled people in their housing to make sure it doesn't waste energy and is safe from disasters.



# Priorities and Actions: Homes and Buildings

## **PRIORITY 3. Bristol City Council should make a register of accessible housing.**

### **ACTIONS:**

- a. This means people can know where housing is and what level of accessibility it has. This would also help emergency services when planning for disasters.
- b. All types of social housing should be included on the register.

## **PRIORITY 4. Disabled people's housing to meet the needs of Disabled people as weather gets hotter or cooler.**

### **ACTIONS:**

- a. Social housing should be retrofitted to ensure Disabled people's comfort and wellbeing during heatwaves and the winter.
- b. Disabled people's needs during disasters should be thought about when allocating social housing. For example, a Disabled person who struggles with heat should not be given a top floor flat. People unable to evacuate quickly should never be given a flat that is at risk of flooding. Allocation should also keep the individual close to their support networks, who are important for ensuring safety and wellbeing during disasters.
- c. Social housing should not be built in areas vulnerable to climate change disasters, for example floodplains or the hottest parts of the city. This should include areas that are likely to experience these problems as climate impacts worsen.
- d. Temporary housing rules should be changed so that people are allowed to stay out of their flat for the night when it is too hot or cold or unsafe to stay in.

## **PRIORITY 5. Social housing should have easy access nearby to all essential services such as doctors, shops and parks.**

## **PRIORITY 6. Ensure that the homes of Disabled people who are renting are accessible and good for the planet.**

### **ACTIONS:**

- a. Housing adverts should be accessible and include information about both accessibility and sustainability features. For example, adverts should say if the room for rent is step-free and what kind of energy is used to heat the house.

## **PRIORITY 7. Disabled people who do not have a home should have their needs met, especially as climate change gets worse.**

### **ACTIONS:**

- a. Lots of homeless people are disabled. Temporary housing and shelters should be accessible and retrofitted.
- b. Homeless Disabled people are at extra risk during heatwaves and other disasters. Support for homeless people in these times should be accessible and ensure Disabled people are one of the groups of homeless people first supported.

## **PRIORITY 8. Groups that work on housing should support both sustainability and accessibility initiatives. For example, Civic societies should act as allies for Disabled people.**



# Priorities: Homes and Buildings

## Scoring of priorities

1 - Very Low, 2 - Low, 3 - Moderate, 4 - High, 5 - Very high/significant

PRIORITY	POTENTIAL COLLABORATORS + STAKEHOLDERS	RESOURCE: COST	RESOURCE: PEOPLE	IMPACT: CARBON	IMPACT: COMMUNITY	TIMESCALE
1. Ensure all new homes are at least partly accessible	<ul style="list-style-type: none"> <li>Bristol City Council</li> <li>Housing developers</li> <li>National government</li> </ul>	3	5	3	4 Equalities – Equal access  Equalities	5-10 years
2. Private, rented and social housing should be protected against disasters. It should also be energy efficient	<ul style="list-style-type: none"> <li>Bristol City Council</li> <li>City Leap</li> <li>Bristol Energy Network</li> <li>Centre for Sustainable Energy</li> <li>One Stop Shops</li> <li>Bristol Energy Cooperative</li> <li>The CHEESE Project</li> </ul>	5	4	5	4 Equalities – Equal access  Protection of life	3-5 years
3. Bristol City Council should make a register of accessible housing	<ul style="list-style-type: none"> <li>Bristol City Council</li> </ul>	2	2	1	4 Equalities – Equal access  Equalities	1-3 years



# Priorities: Homes and Buildings

## Scoring of priorities

1 - Very Low, 2 - Low, 3 - Moderate, 4 - High, 5 - Very high/significant

PRIORITY	POTENTIAL COLLABORATORS + STAKEHOLDERS	RESOURCE: COST	RESOURCE: PEOPLE	IMPACT: CARBON	IMPACT: COMMUNITY	TIMESCALE
4. Social housing should have easy access nearby to all essential services. For example, doctors, shops and parks	<ul style="list-style-type: none"> <li>Bristol City Council</li> <li>Property Developers</li> </ul>	4	3	5	4 Equalities – Equal access  Equalities	5-10 years
5. Ensure that the homes of Disabled people who are renting are accessible and good for the planet	<ul style="list-style-type: none"> <li>Bristol City Council</li> <li>City Leap</li> <li>Bristol Energy Network</li> <li>Centre for Sustainable Energy</li> <li>One Stop Shops</li> <li>Bristol Energy Cooperative</li> <li>The CHEESE Project</li> </ul>					
6. Disabled people who do not have a home should have their needs met, especially as climate change gets worse	<ul style="list-style-type: none"> <li>Bristol City Council</li> <li>Homeless charities</li> </ul>	3	3	1	5 Protection of life	3-5 years
7. Groups that work on housing should support both sustainability and accessibility initiatives. For example, Civic societies should act as allies for Disabled people	<ul style="list-style-type: none"> <li>Civic societies</li> <li>Bristol City Council</li> <li>One City Boards</li> </ul>	1	2	3	3 Equalities – Equal access  Equalities	1 - 3 years

# Concluding Remarks

Working on this project has shown how important it is to listen to Disabled people in climate action. We have a lot to gain and a lot to lose. Whether the changes coming to Bristol are good or bad will be decided by how they are carried out. We ask everyone taking action on climate change in Bristol to use this plan to make sure that the changes are just and accessible.

We want to finish by saying that many Disabled people we talked to for this project have very little trust in those with power. One of the comments we were told most often was “you’re dreamers”.

We have sympathy for this view. But is being a dreamer bad? To dream is to look at ‘what is’ and see ‘what could be’. The current ‘what is’ is bad both for Disabled people and the planet. If we want a future that Disabled people can be safe and happy in then we must dream, and furiously.

Our plan then is two asks:

- To people with power in Bristol, please prove these doubts wrong. Show us that our aims are yours. We will need allies with time, resources and influence. We warmly welcome these collaborators.
- To Disabled people, a better Bristol is possible if lots of us come together to push for it. We need your help to make it real. Be part of the change.

# How our plan makes strategic connections



## **Cross-over with partner community priorities**

There are lots of cross-overs with the priorities in the plans of our partner communities.

Firstly, we have provided advice to and requested that our geographic community partners embed accessibility into their plans and have made specific requests to pay extra attention to their physical infrastructure, including transport and green space. All climate action plans need to be accessible and this need is emphasized by the fact that many of our geographic community partners have some of the highest populations of Disabled people in Bristol.

Secondly, there are many areas of shared interest, and it is our hope that we can both work together and apply pressure together. These shared interests include green job creation, affordable transport, affordable energy/retrofitting, access to green space and affordable food. We also hope that specific schemes that we are creating for our community can work alongside the counterparts being created to serve other communities. Combining the voices of all the partner communities will make it far more likely we achieve the aims of all our plans.

## **Cross-over with Citizen's Assembly, Ecological Strategy and Just Transition Declaration**

Our plan has many areas of cross-over with already published strategy documents on climate and ecological action in Bristol, most importantly the recommendations of [Bristol's 2021 Citizens' Assembly](#) and [Ecological Strategy](#). We therefore anticipate and hope that our plan will work in collaboration with these.

The clearest cross-overs with the Citizens' Assembly are as follows:

1. The recommendation of 'training and upskilling the workforce within five years' includes the action to 'encourage new people to come into the industry'. Our priority to help Disabled people access the new green jobs would help work towards this aim.
2. The recommendation of 'Financing options to support home- owners and landlords' with the specific action to 'Provide grants for lower income households' echoes our call for retrofitting and green energy grants for Disabled people.
3. The recommendation to 'Reduce air pollution urgently' is in line with our call to act on air pollution.
4. The recommendation to 'Involve people in the planning and implementation of transport initiatives' matches our call for Disabled people to be involved in the development of all plans and for a Disabled people's Climate Action Plan Reference Group.

There are also many areas of cross-over between the council's Ecological Emergency Strategy and our plan.

1. The ecological strategy for 'People and businesses to reduce consumption of products that undermine the health of wildlife and ecosystems around the world' is in-line with our waste priorities.
2. The aim to 'Reduce food waste by working with businesses and individuals to improve purchasing decisions and food use' is supported by many of our food priorities.
3. The aim for 'At least 30% of land in Bristol to be managed for the benefit of wildlife by 2030' is complemented by both our food priorities around allotments and our nature priority to 'Support Disabled people to access nature in spaces that they own and already visit.'
4. The aim to 'Work together as a city to tackle single-use plastics' would be supported by our action to provide low or no cost home delivery and local zero-waste options to Disabled people.

The crossover with the [Just Transition Declaration](#) is follows:

1. **'Centring the expertise of disadvantaged communities at every step of the journey.'** The aims in our General section make the same calls for co-production and working with Disabled people on climate projects as in the declaration.
2. **'Good future-proof jobs for everyone.'** The Economy section of our plan makes a similar call for meaningful jobs for Disabled people.
3. **'Supporting individual change through system change'**. The aims in our General section makes a similar call to enable Disabled people to take individual action by making systemic changes.
4. **'Prioritising accessible communication'**. Our general section makes similar calls to make accessible translations and to communicate about climate in an accessible way.
5. **'Building inclusive resilience'**. Our Resilience section is in accordance with this and lays out how resilience should be ensured for the community of Disabled people.
6. **'Infrastructure for all'**, our Nature, Energy, Housing, Transport and Food sections all have aims that highlight the need to put in place accessible infrastructure for Disabled people to enable them to take part in the transition.

Emma Geen authored both this plan and was one of the authors of the Just Transition Declaration, and made sure to carry over the insights she had gained from the community of Disabled people's community climate action plan into shaping the declaration's principles.





# Acknowledgements

The Climate & Disability Forum would like to thank the following people and organisations for their contribution to the development of this community climate action plan. The members of the Climate & Disability Forum are Liz Crow, Priyanka D'Souza, James Deane, Elizabeth Edgeworth, Phil Gingell, Ruth Nortey, Lynn Parfitt, Beth Richards, Sam Richards, Layla Taylor. The Forum was facilitated by Emma Geen.

- The members of the community of Disabled people who took the time to join our community engagement events.
- The Bristol Climate & Nature Partnership. In particular Amy Harrison and Anna Ralph.
- The Community Climate Action Project partners: Bristol City Council (Mark Leach) and CSE (Harriet Sansom) for their help and advice.
- The project steering group for the first version of the plan, including: Maud Brown, George Hooton, Beth Richards, Hilary Smart, Amanda Somers, Valerie Stanfield, Lacey Trebilcock.
- Redcatch Community Garden for hosting one of our public events.
- The National Lottery Community Fund: Climate Action Fund for supporting the development of this plan.





# Evaluation and wider objectives

**This plan was developed as part of the Bristol Community Climate Action Project coordinated by Bristol Climate & Nature Partnership, and supported by Bristol City Council and the Centre for Sustainable Energy.**

The evaluation objectives of the project are:

1. Communities will better contribute to Bristol's 2030 carbon neutral and nature recovery ambitions.
2. There is wider and deeper climate change engagement and leadership in diverse communities.
3. Climate community action will support transitions towards a more just and inclusive society.
4. Community climate action will support increased community resilience to immediate climate and social challenges.
5. Climate community action is recognised as an essential strategic approach towards achieving net zero goals in Bristol, the West of England sub-region (WECA area) and nationally.
6. Communities in Bristol and beyond are inspired and supported to take community-led climate action.

The development phase of the Community Climate Action Project (October 2020 – April 2022) focused on the development of five coproduced community climate action plans by five Bristol community organisations (ACH, Ambition Lawrence Weston, Eastside Community Trust, Heart of BS13 and Lockleaze Neighbourhood Trust) and extensive evaluation data was collected during the project through a suite of 10 surveys using the online Makerble platform.

An insights report was produced at the end of the development phase of the project (April 2022), and a full evaluation report will be produced at the end of the programme (December 2025).

The Community Climate Action Project has been supported by the National Lottery Community Fund's Climate Action Fund. The overall objectives/outcomes of the fund are:

1. More – and more diverse – people engage with climate issues and understand what climate change means for them.
2. More – and more diverse – people have hope that things can change and take action on climate change.
3. Community-led climate action initiatives grow and develop.
4. Carbon emissions are reduced through action at the local level.
5. Community-led climate action is fair and generates co-benefits for people's quality of life.
6. Learning on good practice is captured and shared.
7. The National Lottery Community Fund and others across the sector (including funders) integrate support for community-led climate action into their wider activities.
8. Evidence of increased support for climate action.
9. Local communities develop increased resilience to immediate climate impacts.



# List of community benefits

## Health & wellbeing

- Reduced fuel poverty
- Opportunities for physical activity
- Reduced noise pollution
- Reduced air pollution
- Improved dietary health
- Increased community pride
- Reduced social isolation
- Improve mental health/wellbeing

## Economy

- Job creation
- Green jobs training and apprenticeship opportunities (young people)
- Improved business efficiency
- Improved household finances
- Opportunities for skills and training
- Money retained in the local economy
- Opportunities for local investment
- Lower energy costs
- Lower energy tariffs
- Better public transport links

## Environment

- Reduced greenhouse gas emissions
- Improved green spaces
- Reduced overheating risk
- Reduced flood risk
- Increased biodiversity
- Reduced waste going to landfill
- The creation of more attractive public spaces

## Resilience

- Security in energy supply (fewer power cuts)
- Security in energy supply (less reliance on international imports)
- Food security (security in local food supply)
- Flood risk mitigation

## Community Resilience

- Security in energy supply (less power cuts)
- Security in energy supply (less reliance on international imports)
- Security in energy supply (opportunities to access renewable energy sources)
- Food security (security in local food supply)
- Food security (less food waste)
- Skill creation through volunteering and training sessions

## Society

- Reduced inequalities
- High level decision makers (ie national gov) influenced to make positive changes
- Community brought together / community cohesion
- Improved public sector finances
- Greater voice, agency, and influence of communities in climate decision-making
- Educational opportunities for children and young people

## Equalities

- Equal access
- Preventing the creation of new barriers
- Removing a barrier
- Minority voices amplified and able to influence decision-making



# List of carbon impacts

## Energy

- Hugely reduced energy demand from buildings, including heritage assets
- Smarter & more flexible management of energy demand, including storage
- Decarbonised power generation
- Decarbonised heat delivery
- Widespread, actively managed and planned carbon storage strategies
- Reduced energy demand
- Affordable heating
- Energy use is from renewable sources
- Improving all homes to EPC standard C
- Displacement of fossil fuel energy by using locally generated electricity from renewable sources

## Buildings/Housing

- Hugely reduced energy demand from buildings, including heritage assets
- New buildings and developments that achieve net zero emissions, including associated transport
- Improving all homes to EPC standard C
- Increased/improved insulation on all housing stock

## Food

- Altered dietary patterns & reduced food waste.
- Widely adopted agricultural practices that reduce emissions & increase soil carbon and protect & promote biodiversity
- Food education to reflect the needs of diverse communities
- Reduced meat (and dairy) consumption

## Waste and Consumption

- Hugely altered consumption patterns, buying less and re-using/repairing more
- Greatly increased recycling rates to achieve a circular economy model, taking plastics out of the waste stream
- Altered dietary patterns and reduced food waste.
- Less demand on shop bought edibles
- Less packaging and waste
- Safe disposal of older appliances that contain Freon Gas which depletes the ozone layer
- More food waste going to biomass production



# Full list of community co-production activities

## Presentations and Discussion

BDEF Open Forum: 27 March - 7 people  
International Women's Day event: 14 March - 7 people  
Paul's Place Discussion Morning - 22 people

## Sharing sessions

Nature: 26 July - 9 people      Transport: 28 July - 15 people  
Energy: 30 July - 5 people      Picnic and food: 4 August - 9 people

## Stalls

(Approximately 100 people)  
St Paul's Learning Centre: 14 July  
The Galleries: 4 August, 6 August, 10 August  
Ridingleaze: 18 August  
Clifton Down Shopping Centre: 27 August  
Cabot Circus: 17 September  
Lawrence Hill Health Centre: 28 August  
COP March: 6 November

## Feedback Sessions

BDEF Open Forum: 19 September  
UWE Disability Breakfast: 29 September - 10 people  
WECIL Know Your Rights Group: 30 September - 7 people  
Paul's Place: 22 October - 8 people  
Bristol Equality Network Meeting - 15 people

## Survey

88 responses

## Plan update

Climate & Disability Forum: 2024 to 2025 - 10 members, 7 meetings  
Community Lunch and Conversation Open Forum at Redcatch Community Garden: April 15- 30 lunch attendees. 12 plan discussion attendees  
Online plan feedback Open Forum session: April 28 -10 attendees





# Glossary of key words

**Adaptation:** Process taken to adjust to the actual or expected climate and its effects

**Biodiversity:** All the different kinds of life you'll find in one area—the variety of animals, plants, fungi, and even microorganisms like bacteria that make up our natural world

**Carbon emissions:** The carbon dioxide gas that planes, cars, factories, etc. produce which contribute to climate change

**Carbon footprint:** A tool to help us understand what changes we need to make to cut our emissions. They show us which actions result in emissions, and how much

**Green jobs:** Green jobs are those which are in some way contribute to reducing the consumption of energy and raw materials, limit greenhouse gas emissions, minimise waste and pollution and protect and restore ecosystems

**Greenhouse gases:** Carbon dioxide, and other 'greenhouse gases', trap heat in the atmosphere and keep the earth warm (which is why they're called greenhouse gases). These gases, which occur naturally, make the earth a habitable place – without them it would be too cold to live here

**Just transition:** Ensuring the transition to a low carbon society/economy is equitable, that any benefits are shared widely, whilst supporting those who stand to lose out economically

**Natural habitat:** The natural environment in which a species of plant/animal/fungi etc lives

**Net zero and carbon neutral:** This means that any carbon dioxide that is emitted by the activities taking place is balanced by the same amount of carbon dioxide being absorbed from the atmosphere (sometimes achieving net-zero carbon dioxide emissions is referred to as 'carbon neutrality')

**Renewable energy:** Energy that is generated from natural processes that cannot be exhausted and is constantly renewed (including solar/sunlight, geothermal heat, wind, tides, water)

**Resilience:** The capacity to prepare for, respond to, and recover from the impacts of climate change.

**Retrofit:** The introduction of new materials, products and technologies into an existing building to reduce the energy needed to occupy/use that building

**Wildlife corridors:** A strip of natural habitat connecting populations of wildlife otherwise separated by cultivated land, roads, housing etc

