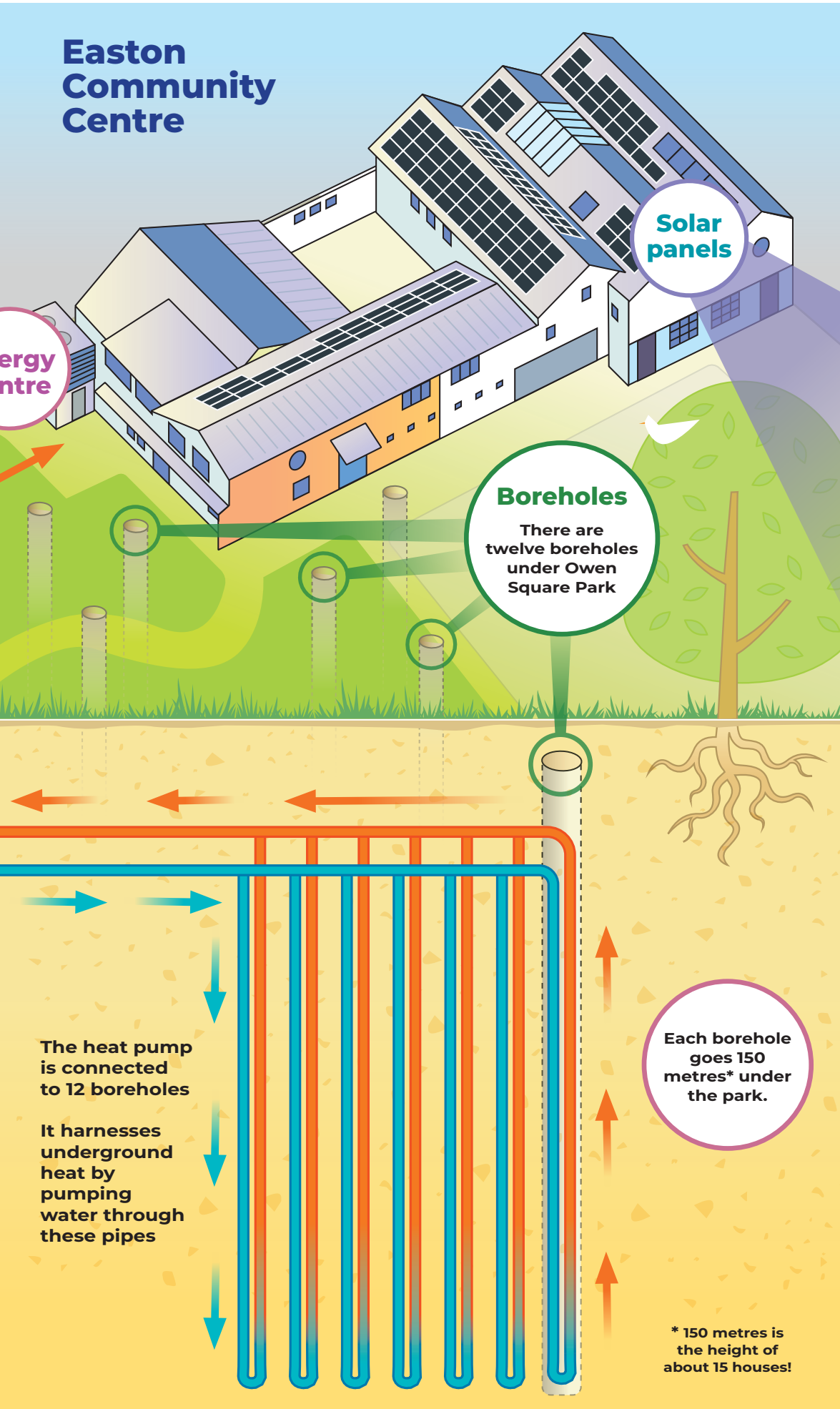
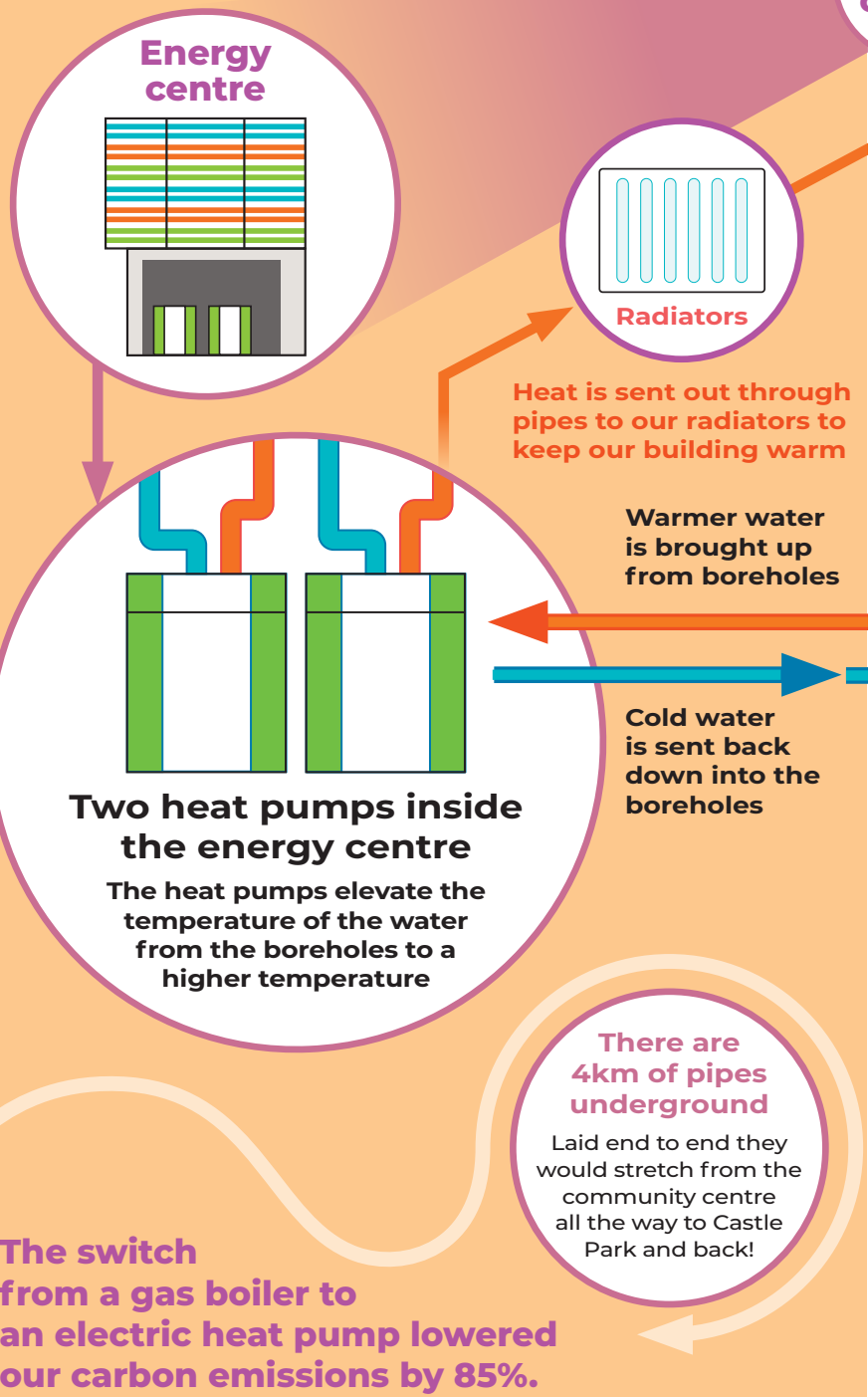


Where does Easton Community Centre get its energy?

Easton Community Centre is heated by an electric ground source heat pump.

This brings natural heat up from the ground, amplifies it and sends it out to our pipes and radiators to keep the building warm. The heat pump is powered by electricity that comes from our solar panels and from the grid.

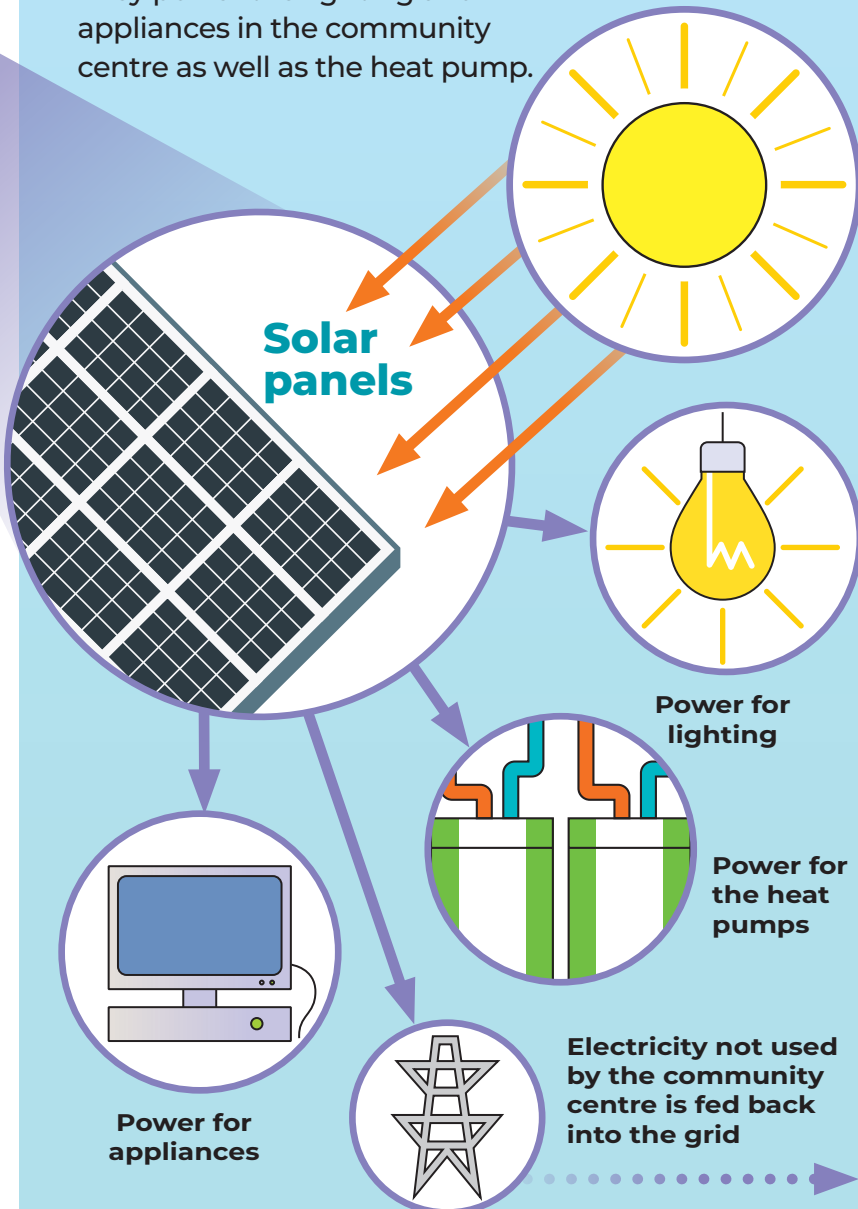
LOOK DOWN! Heat from the ground



LOOK UP! Energy from the sun

163 solar panels on our roof turn the sun's rays into electricity.

They power the lighting and appliances in the community centre as well as the heat pump.



Bristol Energy Cooperative funded the panels through a community share offer. The first array was installed on our roof in 2012, making Easton Community Centre the first community building in Bristol with solar panels.