



# A green and happier future

## One Green Kitchen's Community Climate Action Plan 2025



---

**One Green Kitchen coproduced this plan with women aged 40+ from marginalised communities living in Bristol, and in particular in the area of St Pauls**



# Introduction

**The climate and nature crises are not just about the environment – they are a social crisis too, and it is vital to tackle them together. There is a huge opportunity for bold, transformative climate and nature action to reduce, rather than exacerbate inequalities, and to improve the quality of life for people locally and globally. This requires ensuring that diverse communities and those most affected by climate and nature breakdown are able to shape our response.**

Bristol has a goal of reducing carbon emissions to net zero by 2030. The One City Environment Board published the One City Climate Strategy in February 2020, setting out a pathway of action on how Bristol can become carbon neutral and climate resilient.

Achieving Bristol's mammoth goal of being carbon neutral and climate resilient, whilst also improving the lives of its residents, especially those most disadvantaged, will require the collective skills, knowledge and energy of the whole city. This community climate action plan for One Green Kitchen responds directly to this need. It centres the role of communities and community anchor organisations in this.

This plan has been developed as part of the [Bristol Community Climate Action Project](#), which enables communities in Bristol to reduce their carbon footprints, support nature recovery and bring social benefits to local people.



The project aims to contribute to three significant impacts:

- A reduced risk of catastrophic climate change
- A just and inclusive transition to net zero
- Improved quality of life for local people. For example, improved health and wellbeing, economic opportunity, resilience, social cohesion and improved biodiversity.

# Who



The Community Climate Action Project is a partnership of community organisations across the city: **Ambition Lawrence Weston, Ashley Community Housing, Eastside Community Trust, Heart of BS13, and Lockleaze Neighbourhood Trust**, coordinated by **Bristol Climate & Nature Partnership**, supported by the **Centre for Sustainable Energy and Bristol City Council (Sustainable City & Climate Change Service)**. This partnership sees **Bristol's communities stepping into a leadership role in the city, demonstrating their ability to respond to the challenges of climate change with effective, community-led action.**

The five core organisations involved in the project represent communities experiencing multiple disadvantages who have traditionally been excluded from the climate change debate and responses to it. Across the city, it is also disadvantaged communities like these that are most vulnerable to the impacts of climate change, such as extreme weather events, disruption to critical services which they rely on, instability in living costs, and so on. Any city simply looking to reduce its emissions as rapidly as possible would not prioritise starting with disadvantaged and excluded communities, as households in these communities typically have the lowest emissions and environmental footprints in a city.

However, if our strategic response to climate change and nature breakdown is not informed by the critical insights and lived experiences of the diverse communities which make up our city, we risk designing solutions which further compound disadvantage; failing to respond to important social needs; creating new unintended barriers; and entrenching social and political division and which aren't fit for purpose.

The project's learning and mentoring programme was launched in 2023, with the aim of supporting more, and more diverse, community organisations across Bristol with their climate action journeys.



Since then 11 community groups of place, demography and interest have joined the programme and have been working with their local communities to co-produce climate action plans:

**Cohort 2:** Southmead Development Trust, Knowle West Media Centre, Windmill Hill City Farm, Hillfields Community Garden, and BRICKS (at St Annes House)

**Cohort 3:** Bristol Older People's Forum, Gloucestershire County Cricket Club & the Next Test, Hotwells and Cliftonwood Community Association, One Green Kitchen, Rising Arts Agency, and Shirehampton Action



# What

**During 2021, the core community partners, along with Bristol Disability Equality Forum, coproduced community climate action plans with the communities they represent, having done significant engagement with residents. They are now leading on local demonstrator projects, which respond to key priorities identified in their plans, and contributing to the city's new Community Leadership Panel on Climate and Just Transition. The project also includes a climate and disability strand, which centres Bristol's community of Disabled people in climate and nature action.**

In 2024 five more community groups launched their climate action plans having participated in the learning and mentoring programme, with a further six community groups launching their plans in June 2025. These organisations have received a participation bursary but have had less financial resource from the project than the first round of partners. These cohorts are helping to identify a feasible level of resource needed to develop a community climate action plan process which can be replicated beyond Bristol.

This community climate action plan, and the approach to developing it, has been guided by the principle of a just transition to net zero which improves the quality of life and life chances of citizens, especially those experiencing disadvantage and inequality. Climate projects are often well intentioned, but are frequently extractive of disadvantaged groups by expecting time for free to help them become "more inclusive"; and whilst some climate actions and solutions provide social and economic benefits, others risk making life worse for communities who are already experiencing disadvantage.

The Community Climate Action Project seeks to do things differently, and believes the transition to net zero can and should be a once in a generation opportunity to challenge systemic inequality and improve the quality of life for local people. The project aims to build the knowledge, capacity and confidence of local community organisations, harness their knowledge and insights, and enable them to become leaders in the city's climate action.

The launch in 2023 of Bristol's Just Transition Declaration has created a strategic framework which further supports and guides the just transition ambitions of the community climate action plans and wider project activities. The Declaration sets out 10 principles that everyone working on climate change and nature loss in the city can use to make their plans as fair as possible.



# Why community led climate action?

Climate action requires collective action. By working together we can take powerful community climate action which reduces carbon and improves lives.

The action we take as individuals and households is critically important. And the actions of businesses and organisations, too. But we can't solve the climate crisis without community.

In Bristol, community has been key to so much the city has achieved. It's people working together that makes real change happen. With community we can achieve great things.

During the Covid crisis, community organisations in Bristol showed significant leadership, demonstrating the critical role communities can play in responding to a crisis. The climate and nature crises are no exception.

Community organisations are also experts of their place and the lived experience of their community. They are trusted by people, and so are well equipped to develop pragmatic and targeted solutions which work for their specific communities, rather than imposed from outside. Alongside governmental, business and individual action, community level climate action is a critical piece of the jigsaw if we are to meet the city's ambitious 2030 zero carbon ambitions and with a social mandate whilst also building resilience.



# Statement from our CEO



With the vision of "Having Green Meals to Change the World's Future," One Green Kitchen supports marginalised women and elderly individuals from underrepresented communities. We encourage these groups to engage in discussions and share insights on the future challenges we face together—particularly climate change, as one united community.

This vision has been shaped by listening to diverse voices within the local community. To ensure inclusivity, we have established a steering group of six women, along with one mentor from Ashley Community Housing (ACH) from British, Malaysian/Hong Kong, mixed Latin, Kurdish, and Filipino backgrounds, most of whom have lived in St Pauls for over 25 years.

The steering group has played a crucial role in guiding engagement and shaping this action plan, ensuring it truly belongs to the community—especially amplifying the views of women from underrepresented backgrounds.

At One Green Kitchen C.I.C, we take pride in developing this vision, knowing it is just the beginning of a long journey. Our goal is to empower individuals across Bristol and ensure that climate action represents everyone.

This action plan is a small but significant step toward lasting change—a foundation for a brighter, more sustainable future. Designed as a living document, it will be regularly reviewed and adapted by the community to respond to local challenges, opportunities, and evolving needs.

Developed collaboratively with our target group, this action plan reflects a collective vision for the necessary steps to drive meaningful change on a larger scale. We are committed to ensuring that the community remains actively involved, shaping and turning this vision into a reality.

**Anne Su, CEO - One Green Kitchen**

# Our ambition

**One Green Kitchen C.I.C. uses food as a communication tool to engage women and elderly individuals from underrepresented communities in discussions about wellbeing, community, sustainability, and empowerment.**

The climate crisis affects everyone, yet discussions and decision-making remain dominated by white, middle-class voices. However, it is women and elderly individuals from underrepresented communities who face disproportionate impacts due to poverty, health challenges, and language barriers. These factors, often compounded by past trauma, make them especially vulnerable.

At One Green Kitchen, we ensure their voices are heard, providing a platform for engagement, education, and action. Our work helps them recognise their role in shaping climate solutions, encouraging community-led ideas and advocacy for a more sustainable and equitable future.

Food systems are deeply affected by climate change, with extreme temperature shifts, flooding, drought, and soil erosion impacting food production both in the UK and globally. Beyond these physical challenges, food insecurity, waste management issues, and supply chain uncertainties continue to grow.

Our community climate action plan extends beyond food, promoting low-carbon lifestyles and sustainable practices that enhance quality of life. Through education, hands-on initiatives, and collaborative discussions, we inspire individuals to take practical steps toward climate resilience.

To drive change, One Green Kitchen has established three health-focused food hubs: Carr House in St Pauls, The Centre Galleries and Bangladeshi Bristol Women's Hub in Henbury/Lockleaze (in partnership with the community).

These hubs serve as spaces for learning, sharing, and action, bringing together community members to explore the links between food, climate, and sustainability.

Our ambition is to expand food and environmental sustainability hubs citywide, fostering collaboration with partners to build a greener, more inclusive future—where all communities are empowered to contribute to meaningful climate action.





# Context: Our community

Bristol's global majority community has steadily grown over the years, now making up 18% of the city's population. According to the Office for National Statistics, 50% of people of colour aged 25 and above are women. This diverse community comes from a wide range of ethnic and cultural backgrounds, contributing to Bristol's rich history of diversity and inclusion.

However, when it comes to climate action and engagement, the marginalised community often faces barriers such as language, cultural differences, and limited accessibility. According to the Quality of Life Survey, people of colour in Bristol report lower life satisfaction and poorer mental wellbeing compared to the city's average.

At One Green Kitchen C.I.C., our mission is to support marginalised women and elderly individuals from underrepresented communities—particularly in St Pauls, Henbury, and Lockleaze—through health-focused food hubs.



Currently, we engage over 60 members from African, Indian, Sikh, Pakistani, Somali, Chinese/Hong Kong, Kurdish, and Malaysian backgrounds, ranging in age from 40 to 70+ years. Many of these women and elderly individuals face multiple challenges, including: poverty and social isolation, language and cultural barriers, limited access to health resources and complex trauma and mental health struggles.

Through food-based engagement, climate action programs, and wellbeing initiatives, we aim to bridge these gaps, empower individuals, and create a more inclusive, sustainable future for Bristol's diverse communities.



# Our baseline community carbon footprint

## Why is a community carbon footprint useful ?

Some people express concern or scepticism about the value of carbon footprints – and it is reasonable to be cautious. Individualised carbon footprints were popularised by British Petroleum in the early 2000s, to push responsibility for tackling climate change on the individual and away from that of the oil industry. However, there is also a history of ecological footprinting which came before this, which was driven by ecologists in the US who were increasingly concerned about the rapid depletion of natural resources. They were motivated by the belief that humanity needed a shared understanding of its environmental impact to inspire collective action. And that footprinting created an opportunity to translate complex environmental data into something more accessible, which everyone could understand and use.

Bristol's citizens care and want to take positive action, and footprinting can empower them by guiding them to the actions which they have power to take, and which will bring the greatest carbon reduction. They can also reveal where systemic changes are needed to enable individuals to take positive action.

The Community Climate Action Project focuses on taking action at the community scale, and so our carbon footprint is a community carbon footprint, telling us about the scale of carbon emissions associated with our community.



# What did it tell us?

Our carbon footprint report, produced by Bristol charity the Centre for Sustainable Energy, showed us the scale of our community's carbon emissions: how it compares to the Bristol average, and the main 'consumption activities' responsible for these emissions (e.g. the food that we eat, the transport that we use, and the services that we use). The 'community' that One Green Kitchen engages with is diverse, but for the purposes of creating a community carbon footprint, this has been simplified to be 'women in Bristol, predominantly over 40 years of age, from non-white ethnic groupings'.

The results were calculated using a combination of ONS Family Spending data, Census data and Carbon Footprint statistics. Having a picture of our community carbon footprint helps us understand the activities which result in carbon emissions, and from here we can begin to think about the breadth of activities needed to reduce emissions, where to focus our attention, and to explore which activities are possible at the community-level, and which require Bristol-wide, national, or even global commitment and action.

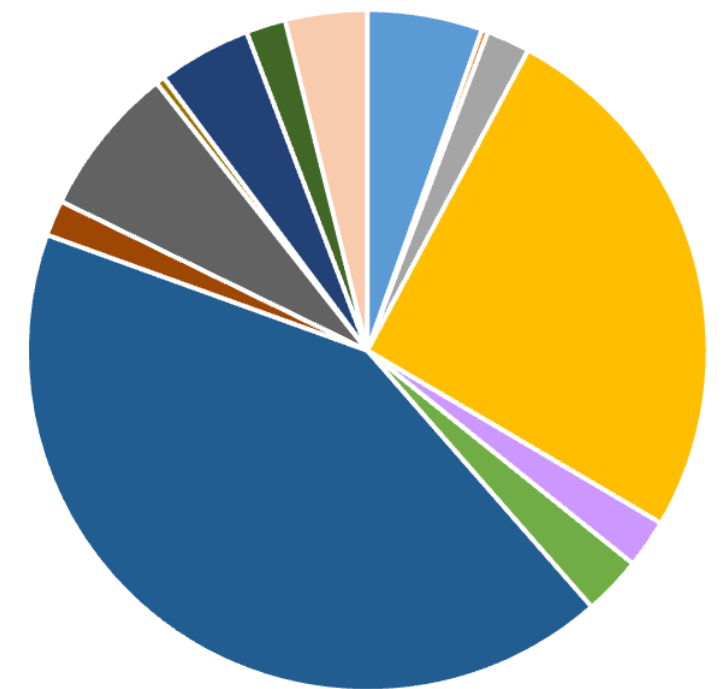
The table below shows us data on our community's carbon footprint, both on a per person basis and for the whole community across Bristol. The key thing to take from these figures is that the average emissions per person are lower in our community than compared with the Bristol average.

Community	Population in Bristol	Per person GHG emissions in Bristol (tCO2e/yr)	Community GHG emissions in Bristol (tCO2e/yr)
Women 40+ EM	12,990	12.7	164,600
Bristol Overall	457,862	13.5	6,159,900

[GHG = Greenhouse gas emissions]  
 [tCO2e = tonnes (t) of carbon dioxide equivalent, which is a standardized unit used to measure the climate impact of various greenhouse gases]

Below we can see how these emissions split out across our various consumption activities. We can see that transport accounts for the biggest proportion of our community's emissions, followed by housing, fuel and power.

- Food & non-alcoholic drinks
- Alcoholic drinks, tobacco & narcotics
- Clothing & footwear
- Housing, fuel & power
- Household goods & services
- Health
- Transport
- Communication
- Recreation & culture
- Education
- Restaurants & hotels
- Miscellaneous goods & services
- Other





# Bristol climate context

The science on the climate emergency is clear: we need urgent action to reduce our carbon emissions to limit global temperature rise to below 1.5°C, and to prevent disastrous impacts. Climate-related risks to health, livelihoods, homes, food security, the environment, our flora and fauna, raw materials, water supply and economic growth will continue to increase in severity. Even if we manage to limit change to 1.5°C (which now looks unlikely), the impacts will be felt differently in different regions. Populations most at risk are marginalised, disadvantaged and vulnerable. In Bristol, some of our most deprived wards will be the most exposed to the physical impacts of climate change.

The potential impacts of climate change on our city and its residents are significant and wide ranging.

**“I have really enjoyed being involved in this Climate Action Plan engagement. As a new migrant, I have learned so much—gaining new knowledge and ideas about energy, transportation, recycling, building skills, food, and more.”**

In the Bristol One City Climate Strategy (Preliminary Climate Resilience Assessment), evidence was gathered on physical climate risk to the city. Under a high emissions scenario, by 2080, Bristol's coastline is projected to increase by up to 72cm, winter rainfall is projected to increase by up to 48%, summer maximum temperature is projected to increase by over +9°C, and summer rainfall is projected to decrease by up to 68%.

This milestone is the age today's primary school children will retire. These climate hazards present serious risks to Bristol's homes, businesses, schools, community assets, and critical infrastructure, causing negative impacts to livelihoods, disruptions to our daily lives and a risk to life. These impacts will get progressively worse up to 2080.

Climate change is a complex challenge. We recognise the interconnected and global nature of the world, which exposes Bristol to potentially catastrophic climate risks arising well beyond the city's boundary. We also acknowledge our local, national and global responsibility to take bold and immediate climate action as a city, to increase the city's resilience in the face of these risks, and to share our successes and challenges openly and generously.

## Taking action in Bristol – One City Climate Strategy

Bristol has committed to reducing its carbon emissions to net zero and becoming climate resilient by 2030. [Bristol's One City Climate Strategy](#) outlines the key changes across the city, and the UK, that will be needed to reach our climate change goals. Whilst Bristol's average carbon footprint is lower than the UK average, transport and food and diet is where emissions are greater than the average. Therefore, the community climate action plan has been an opportunity to engage members of our community in this important mission of tackling climate change, to explore how they can take the lead on changes in our community, and how we can ensure we maximise the benefits that can come from these changes – warmer and more affordable-to-heat homes, quieter and safer streets, cleaner air.

Our natural environment is critical to our wellbeing and the climate resilience of our city. Preserving and supporting the green spaces of Bristol will decarbonise the air we breathe, and improve our mental and physical health. It will also reduce the risk of flooding and extreme temperatures (the two major climate change risks facing Bristol in the coming years), and act as a carbon 'sink' (absorbing carbon from the atmosphere).

## Taking action in Bristol – Ecological Emergency Strategy

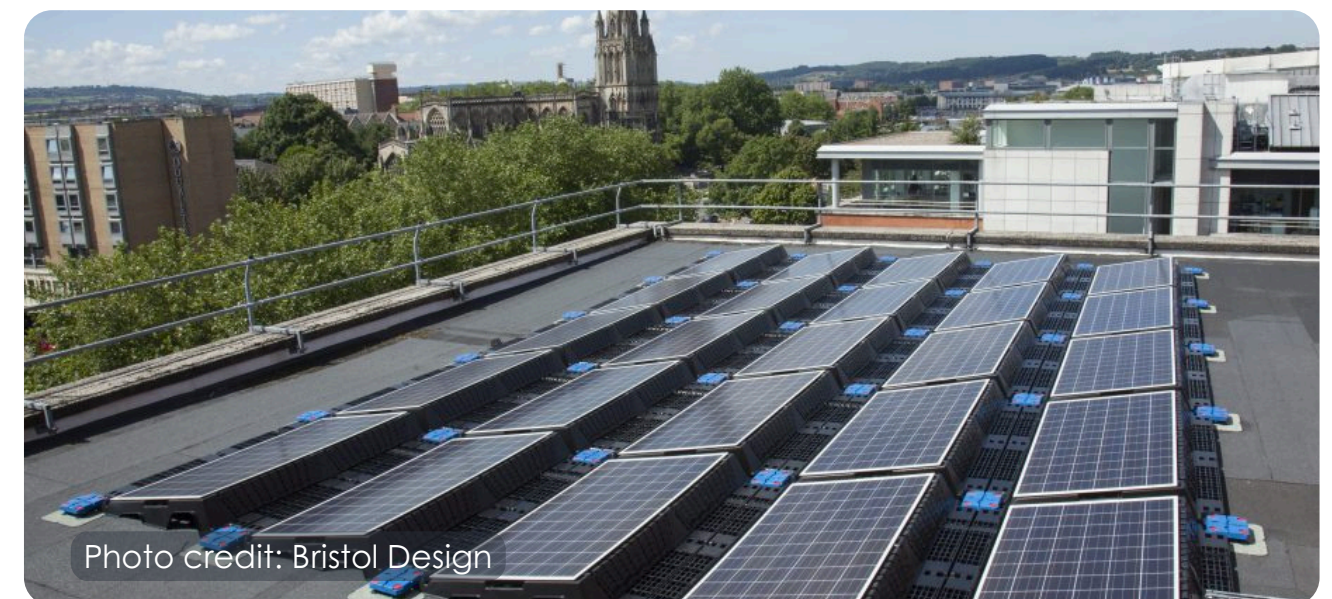
In February 2020, Bristol declared an ecological emergency in response to the decline in wildlife in the city. In September 2020, the Ecological Emergency Strategy for Bristol was launched as the city's first coordinated effort to confront the decline in nature.

The strategy sets out the key ecological actions we need to take to achieve a carbon neutral and climate resilient city by 2030 and consists of four goals:

- Space for nature - for 30% of land in Bristol to be managed for the benefit of wildlife.
- Pesticides - to reduce the use of pesticides in Bristol by at least 50%.
- Pollution - for all waterways to have excellent water quality which supports healthy wildlife.
- Our wider footprint- to reduce consumption of products that undermine the health of wildlife and ecosystems around the world.

[You can read a full summary of the recommendations from the Bristol's Ecological Emergency Strategy for the city here.](#)

We have given consideration to the ambitions of both these key strategies when developing the priorities of our community climate action plan.



## Bristol City Leap

Another development significant to the communities working on community climate action is the Bristol City Leap programme. This is a 20-year joint venture partnership between Bristol City Council, Ameresco and Vattenfall Heat UK. It is designed to enable the delivery of over £1 billion of investment into Bristol's energy system at a time when the UK is struggling to match resources to the scale of change needed to address climate change and the energy/cost of living crisis.

What will City Leap do?

- Significant expansion of Bristol's Heat Network to provide the city with reliable affordable low carbon heat from sustainable sources.
- Solar panels and low carbon heating systems for local schools.
- The council's social housing will be made more energy efficient to tackle the cost-of-living crisis.
- Substantial investment will go into community-owned renewable energy projects.
- Provide funding to communities to support community energy projects.



# Beyond Bristol

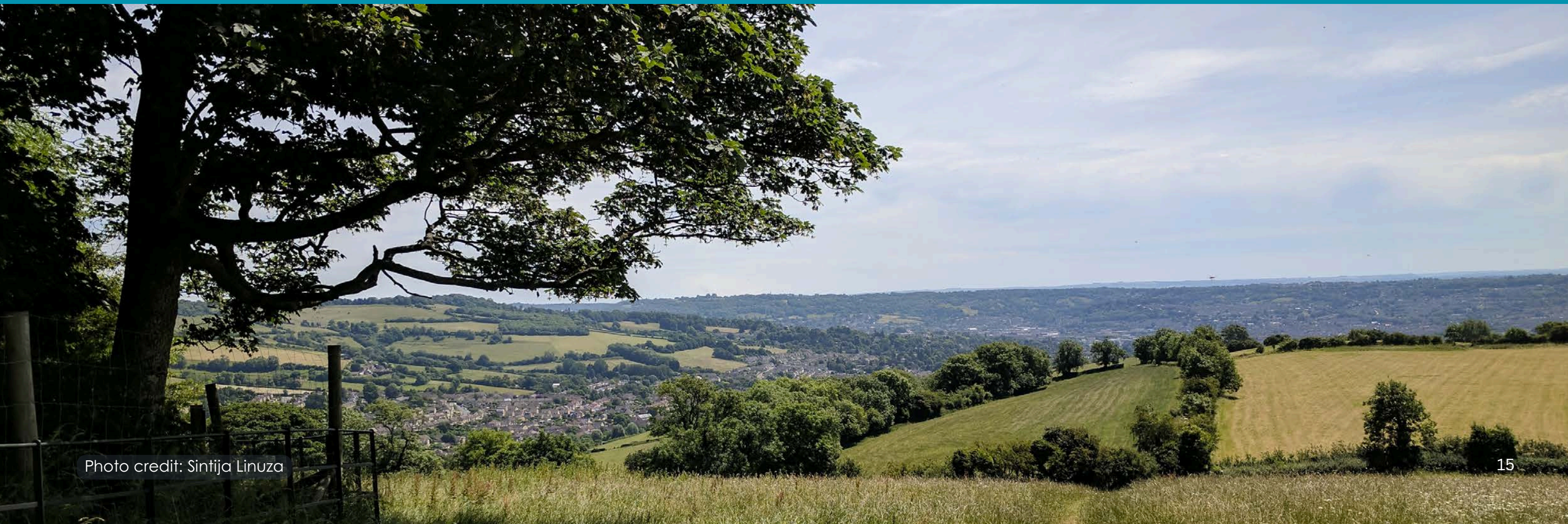
## The West of England Combined Authority

The city of Bristol is located within the West of England Combined Authority (WECA) area and some significant climate and nature central government funding and policy comes through WECA and impacts Bristol communities. This includes some aspects of strategic transport, skills and development of major developments along with some aspects of land use planning and the planning of housing. The West of England Combined Authority covers the council areas of South Gloucestershire and Bath & North East Somerset, as well as Bristol. It does not have elected councillors, only the Mayor is elected. Similar two-tier arrangements are in place in most of the larger cities/and regions across England.

In 2022, the [Climate and Ecological Action Plan](#) for the West of England region was launched, and in 2024 [the West of England Nature Recovery Strategy and Toolkit](#) were launched.

## National context

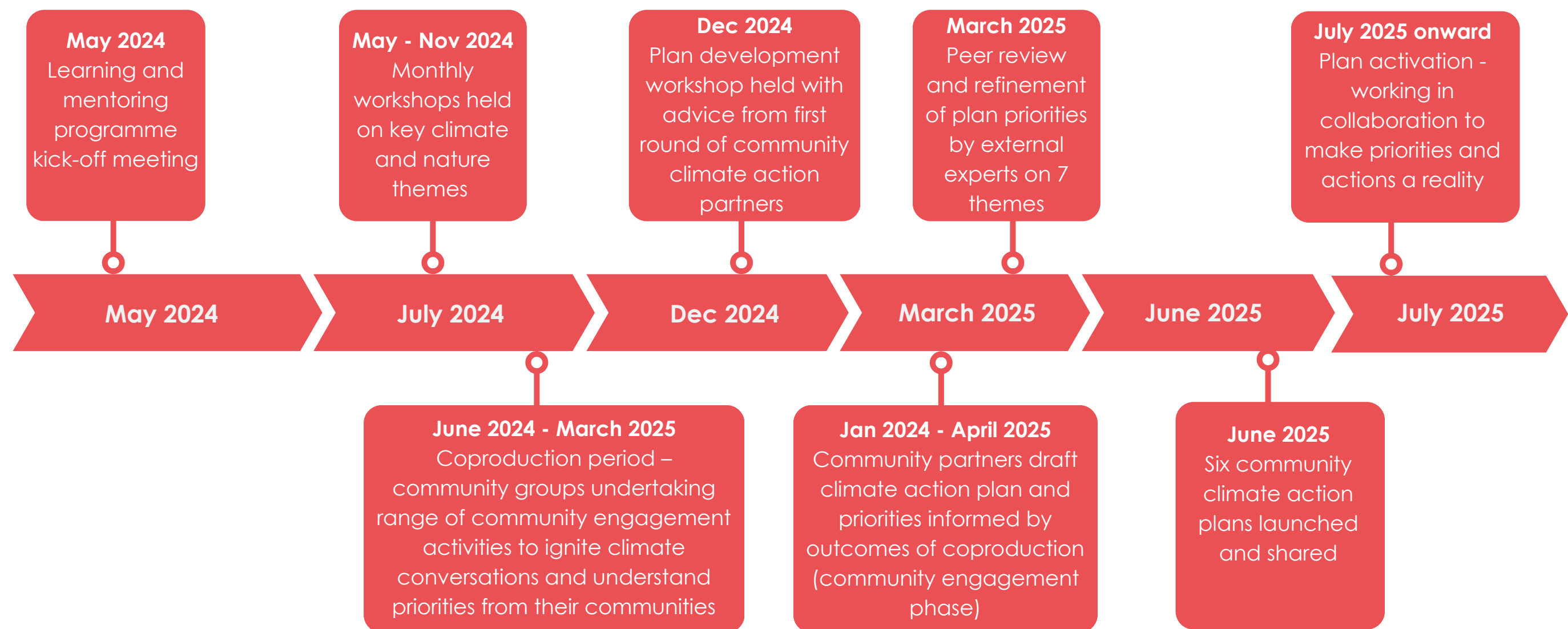
Many of the actions communities want to see are not under the remit of local councils or Combined Authorities. We feel it is important to include these nonetheless - often local authorities can play a role allying with local communities to lobby central government for legislation, funding or policy change. Greater devolution of powers and budget from central government are planned for the coming year.





# How we developed this plan

This plan was developed as part of the learning and mentoring programme, delivered by Bristol Climate & Nature Partnership, as part of the Community Climate Action Project. The six partners involved in the learning and mentoring programme (cohort 3) met monthly for themed workshops on climate and nature issues, and engaged with their communities from summer 2024 to spring 2025. The flowchart below captures the main elements of the methodology to create Bristol's third round of community climate action plans:



## Throughout:

Connecting city partners – through monthly workshops with city experts, and support from Bristol City Council and Centre for Sustainable Energy



# Our methodology

This community climate action plan was developed by women aged 40 to 70+ from underrepresented communities. We brought together the experiences and knowledge of women living in St Pauls and the surrounding areas.

To achieve this, we established a steering group of six women, along with one mentor from Ashley Community Housing (ACH), representing Pakistani, British, Malaysian/Hong Kong, mixed Latin, Kurdish, and Filipino backgrounds. Most of them have lived in St. Paul's for over 25 years. Their involvement has been invaluable in providing constructive ideas on how to engage the wider community, helping to identify priorities and shape actionable contributions to this plan.

In total, we organised eight engagement activities, two of which were in partnership with the Bangladeshi Bristol Women's Group and the Pakistani Welfare Organisation. These activities included community conversations and workshops, where our community could come together to share their concerns and listen to others. In addition to these engagement workshops, we also conducted interviews with local businesses to ensure inclusivity and representation.

To guide discussions, we developed 36 questions across seven key themes, incorporating follow-up sub-questions as well as simple yes/no answers. Participants could anonymously submit their responses.

Some engagement activities were run with partner organisations alongside volunteer-led reusable art workshops, promoting creative and sustainable community participation.



## Key Insights and Process

**Survey participation:** 65 women participated in the survey.

**Age range:** The majority were aged 40 to 70+, with only one participant aged 25 and three between 35 and 40 years old.

**Residency:** Most participants live in St. Paul's and the surrounding areas, while others reside in Fishponds, Southmead, Knowle, and other parts of Bristol.

**Steering group representation:** The steering group members are from underrepresented backgrounds and have lived in St. Paul's for over 25 years.



**Ethnic backgrounds of participants:** Participants included women from Chinese/Hong Kong, Somali, Jamaican, Pakistani, Kurdish, Malaysian, Filipino, Vietnamese, Irish, Latin, British and Bangladeshi, Indian, and Sikh backgrounds.

**Feedback and review:** A draft of the plan was shared with steering group members and target groups for feedback to enhance its effectiveness.

**Translation and interpretation support:** Volunteers were arranged to translate documents and provide interpretation support throughout the engagement activities.

**Marginalised communities:** Some participants belong to marginalised groups facing complex life challenges, including poor health, language and cultural barriers, and social isolation.

# Climate action heroes

## Bristol women of colour: The heart of community climate action

During the creation of Bristol's One City Climate Strategy (2020), women of colour played a critical role in advocating for a just transition — ensuring that climate action would benefit the most disadvantaged communities first.

Historically, Bristol's women of colour have fought tirelessly for warm homes, healthy food, clean air, safe transport, and green spaces — all of which are now recognised as key pillars of today's climate action plan.

Nowhere is this spirit more evident than in St Pauls, where a deep love and pride for the local community shines through. As climate change has become a more urgent issue, women from St Pauls have led the way. Over the past decade, they have been at the forefront of raising awareness, participating in sustainability discussions, and championing environmental justice.

Through initiatives such as the community steering group, these women, as proud representatives of Bristol's women of colour, have demonstrated unwavering commitment to improving their neighbourhood and shaping a greener, fairer future. Their efforts deserve recognition, and we proudly celebrate them as local climate heroes.

This powerful combination of rich cultural history and active community leadership paints a portrait of a neighbourhood that is both deeply rooted in its past and boldly focused on its future.

The women of colour of Bristol continue to inspire with their passion, resilience, and leadership, creating positive change not just for today's community — but for generations to come.



**'The Bangladeshi Bristol Women's Group was proud to join the Climate Change and Environment Project. Through this initiative, our members gained vital knowledge about sustainability, fuel poverty, green spaces, transport, and waste management. Many were inspired to make changes at home and in the wider community. We are grateful for the partnership with One Green Kitchen and look forward to continuing this important work.'**

**—Asma, Secretary from Bangladeshi Bristol Women's Group**

**'My husband and I have lived Bristol for almost 30 years, and we love this place deeply. In Chinese and Malaysian culture, when you love a place and see it as part of your home and family, you do everything you can to make it better—not just for yourself, but for future generations. That's why we are committed to this community, working towards a cleaner, greener, and more inclusive Bristol. A place where everyone, regardless of background, can feel at home and take pride in their surroundings.'**

**'I want to be involved in this plan because I believe in the power of diverse cultures in the local community—where richness and heritage bring strength, not division. True wealth lies in the people, their traditions, and the shared experiences that unite us. For me, it's about coming together as a community—growing vegetables and fruit while building connections across cultures. Through food, we share stories, break barriers, and cultivate peace, love, and happiness. Let's nurture both the land and our relationships, creating a future where every voice is valued and every culture thrives!'**

# Priorities and actions



**Residents' priorities and actions to achieve them have been grouped into eight key climate themes – Transport, Homes & Buildings, Energy, Food, Waste & Resources, Nature, Business & Skills and Adaptation & Resilience.**

The following priorities and actions were developed with the local community through our community engagement process and refined with support from Bristol Climate & Nature Partnership and various community climate action partners from across the city. There is also crossover and connection with the priorities developed by partners in other geographic neighbourhoods in the city and with the citywide priorities in the community climate action plan of Bristol's Community of Disabled People and Bristol's community of refugees and asylum seekers.

We have scored the recommendations according to the monetary cost (Resource: Cost), staffing and effort required to achieve it (Resource: People), potential reductions in carbon emissions (Impact: Carbon) and positive impact on the community through social benefits (Impact: Community). While not exhaustive, we have also listed some key stakeholders and potential collaborators, many of whom are already doing work related to the priority and whose support and leadership will be critical to success. Some of these stakeholders have not yet been involved in developing the plan. Rough timescales for implementation of priorities have also been noted to highlight quick wins alongside significant strategic changes that will take sustained, long-term and citywide action. Where possible the priorities and action have been broken down into 1) organisational 2) community wide 3) citywide.



## Scoring definition

1 - Very Low, 2 - Low, 3 - Moderate, 4 - High, 5 - Very high/significant

## Timescale

1-2 years (quick win)

3-5 years (medium term larger scale)

5-10 years (significant or complex)

## Criteria scored

Resource: cost  
Impact: carbon

Resource: people/time  
Impact: community



# Priorities: Transport

## Scoring of priorities

1 - Very Low, 2 - Low, 3 - Moderate, 4 - High, 5 - Very high/significant

PRIORITY	POTENTIAL COLLABORATORS + STAKEHOLDERS	RESOURCE: COST	RESOURCE: PEOPLE	IMPACT: CARBON	IMPACT: COMMUNITY	TIMESCALE
<p>1. Reliable and affordable buses</p>	<ul style="list-style-type: none"> <li>WECA</li> <li>Bristol City Council</li> <li>Local councillors</li> <li>First Bus Metro-bus</li> <li>Great Western Railway</li> <li>Travel west Transport for Greater Bristol</li> </ul>	<p>5</p> <p>Reducing costs for community actions and securing funding from WECA and Bristol City Council</p>	<p>5</p> <p>Create impact and sustainable community initiatives, fostering citywide collaboration across different sectors</p>	<p>4</p> <p>Reduced km travelled by car</p> <p>Reduced number of cars on road</p>	<p>4</p> <p>Local people can benefit from lower energy costs which can impact their standard of living</p> <p>Improve their cost of living</p>	<p>Long-term strategy for sustainable transport and community engagement (3-5+ years)</p>
<p>2. Alternative bus solutions e.g. community bus</p>	<ul style="list-style-type: none"> <li>WECA</li> <li>Bristol City Council</li> <li>Local councillor</li> <li>Community Transport operators</li> </ul>	<p>5</p> <p>Reducing costs for community actions and securing funding from WECA and Bristol City Council</p>	<p>5</p> <p>Creating a collaborative network between WECA, local authorities and bus companies</p>	<p>4</p> <p>Reduced km travelled by car</p> <p>Reduced number of cars on road</p>	<p>4</p> <p>Local people can benefit from lower energy costs which can impact their standard of living</p> <p>Improve their cost of living</p>	<p>Data collection &amp; community engagement (year 1-2)</p> <p>Long-term strategy for sustainable transport and community engagement (3-5+ years)</p>



# Priorities: Transport

## Scoring of priorities

1 - Very Low, 2 - Low, 3 - Moderate, 4 - High, 5 - Very high/significant

PRIORITY	POTENTIAL COLLABORATORS + STAKEHOLDERS	RESOURCE: COST	RESOURCE: PEOPLE	IMPACT: CARBON	IMPACT: COMMUNITY	TIMESCALE
<p>3. Support women from underrepresented communities to reduce car use</p>	<ul style="list-style-type: none"> <li>Bristol City Council</li> <li>Local councillor</li> <li>The local community groups</li> </ul>	<p>5</p> <p>Securing funding from BCC or the local authorities</p>	<p>5</p> <p>Establish a Transport Stakeholder Forum to emphasise the needs of women from marginalised backgrounds</p>	<p>4</p> <p>Enabling women to reduce car use can have both economic and environmental benefits</p> <p>Reducing car use helps lower the city's overall carbon emissions</p>	<p>4</p> <p>Improve women from marginalised communities standard of living who face barriers due to limited and unreliable public transport</p>	<p>Data collection &amp; community engagement (Year 1-2)</p> <p>Pilot programs &amp; policy integration (Year 2-3)</p>
<p>4. Enhance safety for elderly and women from underrepresented communities</p>	<ul style="list-style-type: none"> <li>Avon and Somerset Police</li> <li>Bristol City Council</li> <li>Local councillor</li> <li>First Bus Metro bus</li> <li>Great Western Railway</li> <li>Travel west Transport for Greater Bristol</li> <li>The local school and education institute</li> </ul>	<p>5</p> <p>Grant proposal for transport Improvement &amp; driver education To enhance transport accessibility and safety for vulnerable groups</p>	<p>5</p> <p>Develop Targeted Transport improvements and education cross different sectors</p>	<p>4</p> <p>Enhancing transport safety can have both economic and environmental benefits,</p>	<p>4</p> <p>Local people can benefit from lower energy costs which can impact their standard of living and</p> <p>Improve their wellbeing</p>	<p>Data collection &amp; community Engagement (Year 1-2)</p> <p>Pilot programs &amp; policy integration (Year 2-3)</p>



# Priorities and actions: Transport

## **PRIORITY 1. Reliable and affordable buses**

### **OUR ORGANISATION ACTIONS:**

- a. Create a welcoming space for local residents—especially vulnerable women and elderly individuals—to discuss transport challenges, climate-friendly mobility solutions, and identify the most necessary transport routes. e.g Community Climate Breakfast and Food Hubs (quarterly)

### **OUR COMMUNITY ACTIONS:**

- a. Supporting grassroots groups and individuals in community-led transport campaigns
- b. Support to conduct the survey from the residents through One Green Kitchen Community Climate Breakfast hubs

### **CITYWIDE / OTHER STAKEHOLDERS ACTIONS:**

- a. To collect real experiences and transport challenges from elderly, refugee, and migrant women e.g. One Green Kitchen climate cafe
- b. Map out priority routes and unmet needs

## **PRIORITY 2. Alternative buses solutions e.g. community bus**

### **OUR ORGANISATION ACTIONS:**

- a. Direct engagement with policymakers and transport officers to push for better services and invite them to attend the above
- b. Bring residents together over food to discuss transport barriers and share experiences through gathering in-depth feedback from residents on transport challenges

### **OUR COMMUNITY ACTIONS:**

- a. To empower grassroots organisations and individuals to run marketing campaigns based on real community needs, raising awareness about transport accessibility, sustainability, and safety for vulnerable women and elderly residents.
- b. Trained volunteer drivers from the community
- c. Minibus partnerships - link with local churches, housing providers, or care homes to share existing minibuses during off-peak hours
- d. Offer flexible booking or weekly routes for isolated elders or women

### **CITYWIDE / OTHER STAKEHOLDERS ACTIONS:**

- a. To pilot some Community Shuttle Routes e.g Runs weekly or bi-weekly to key destinations: GP surgeries, food markets, activity hubs, cultural centres. The stops or routes will be designed with community input

## **PRIORITY 3. Supporting women from underrepresented communities to reduce car use**

### **OUR ORGANISATION ACTIONS:**

- a. Deliver workshops and peer-led talks on the environmental and health benefits of sustainable travel.
- b. Connect participants to community car clubs, local cycling libraries, or walking buddy schemes



# Priorities and actions: Transport

## **PRIORITY 3. Supporting Women from Underrepresented Communities to Drive Sustainably**

### **OUR COMMUNITY ACTIONS:**

- a. To improve safety on public transport through setting up a Whatsapp group to link up with the local residents E.g join the walking together programme
- b. To use community hubs as safe places for travelling/accessing the city e.g BS3 food club and Travel buddy scheme

### **CITYWIDE / OTHER STAKEHOLDERS ACTIONS:**

- a. To offer free or subsidised electric vehicle familiarisation workshops
- b. Pilot e-bike access scheme or car-sharing club led by women
- c. To facilitate public transport confidence-building sessions (routes, apps, planning) across the city

## **PRIORITY 4. Enhancing safety for elderly and women from underrepresented communities**

### **OUR ORGANISATION ACTIONS:**

- a. To provide a safe space for shared stories and strategies
- b. Invite experts (e.g. local police liaisons, women's health advocates) to conduct workshops e.g. Topics: night-time safety

### **CITYWIDE / OTHER STAKEHOLDERS ACTIONS:**

- a. To implement community transport ambassadors to support elderly and vulnerable passengers
- b. Identify the role of ambassadors e.g assist elderly and vulnerable passengers at bus stops, stations, and on public transport and provide information on accessible routes, timetables, and travel discounts to support passengers with mobility challenges (e.g., helping with seating or luggage)



# Priorities: Food

## Scoring of priorities

1 - Very Low, 2 - Low, 3 - Moderate, 4 - High, 5 - Very high / significant

PRIORITY	POTENTIAL COLLABORATORS + STAKEHOLDERS	RESOURCE: COST	RESOURCE: PEOPLE	IMPACT: CARBON	IMPACT: COMMUNITY	TIMESCALE
<p>1. Improve residents from diverse backgrounds access to healthy, affordable, and sustainable food within underprivileged areas</p>	<ul style="list-style-type: none"> <li>Bristol City Council</li> <li>Bristol Food Network</li> <li>Local Community Groups</li> </ul>	<p>3</p> <p>Engagement with multiple stakeholders across sectors, training</p>	<p>3</p> <p>Neighbourhood Food Schemes: Feasibility, Development and Capital Cost Considerations</p>	<p>3</p> <p>Reduced meat consumption</p> <p>Reduced food waste</p>	<p>4</p> <p>Improved mental health/well being</p> <p>Opportunities for skills and training to understand cultures/traditions</p> <p>Improved household finances</p> <p>Reduced waste going to landfill</p>	<p>1-2 years for courses and collect information from the target audiences</p> <p>3-5 years systemic interventions and campaigns</p>
<p>2. Expand affordable and culturally inclusive food options</p>	<ul style="list-style-type: none"> <li>Community cafes</li> <li>Feeding Bristol</li> <li>Food Banks</li> <li>Food Clubs organising in different community centre</li> <li>Bristol Food Network</li> <li>The local convenience stores</li> </ul>	<p>2</p> <p>Staff</p> <p>Space</p> <p>Feasibility/development</p>	<p>3</p> <p>Engagement across multiple sectors</p> <p>Training</p>	<p>3</p> <p>Altered dietary patterns and reduced food waste</p>	<p>4</p> <p>Increased food security</p> <p>Reduced bills</p> <p>Skills creation through volunteering</p> <p>Removing barriers</p> <p>Improving wellbeing for less representative communities, especially those with strong religious backgrounds, through access to culturally appropriate and nutritious budget food</p>	<p>1-2 years</p>



# Priorities: Food

## Scoring of priorities

1 - Very Low, 2 - Low, 3 - Moderate, 4 - High, 5 - Very high / significant

PRIORITY	POTENTIAL COLLABORATORS + STAKEHOLDERS	RESOURCE: COST	RESOURCE: PEOPLE	IMPACT: CARBON	IMPACT: COMMUNITY	TIMESCALE
<p>3. Promote environmentally sustainable eating habits</p>	<ul style="list-style-type: none"> <li>• WECA</li> <li>• Bristol City Council</li> <li>• Public Health</li> <li>• Environmental Departments</li> <li>• Local Supermarkets and Restaurants</li> <li>• Community cafe</li> <li>• The local farms and food producers</li> <li>• Bristol Food Network</li> </ul>	<p>3</p> <p>Provide grants and incentives for sustainable food programs</p>	<p>3</p> <p>Engagement across multiple sectors</p>	<p>3</p> <p>Implement food waste reduction initiatives</p> <p>Reduce chemical usage and carbon footprint in production</p>	<p>4</p> <p>Local people can benefit from culturally appropriate plant-based diets which can improve their wellbeing</p>	<p>1-2 years</p>
<p>4. Strengthen community engagement and education</p>	<ul style="list-style-type: none"> <li>• DfE</li> <li>• Bristol City Council</li> <li>• WECA</li> <li>• Local community groups</li> <li>• Local Schools</li> </ul>	<p>4</p> <p>Provide grants and incentives for sustainable programs</p>	<p>3</p> <p>Set a multi-stakeholder approach</p>	<p>3</p> <p>Altered dietary patterns and reduced food waste</p>	<p>4</p> <p>Improve peoples livelihoods via knowledge</p> <p>Empowers them to make greener choices in their shopping</p> <p>Students can learn about eco-friendly and healthier food choices from an early age</p>	<p>1-2 years</p>



# Priorities: Food

## Scoring of priorities

1 - Very Low, 2 - Low, 3 - Moderate, 4 - High, 5 - Very high / significant

PRIORITY	POTENTIAL COLLABORATORS + STAKEHOLDERS	RESOURCE: COST	RESOURCE: PEOPLE	IMPACT: CARBON	IMPACT: COMMUNITY	TIMESCALE
<p>5. Empower local food businesses in underrepresented communities, a holistic approach is needed—beyond financial support</p>	<ul style="list-style-type: none"> <li>• Bristol City Council</li> <li>• WECA</li> <li>• Local community groups</li> <li>• ACH</li> </ul>	<p>3</p> <p>Provide grants and incentives for sustainable programs</p>	<p>3</p> <p>Set a multi-stakeholder approach</p>	<p>3</p> <p>Encouraging social responsibility and sustainability to help save the planet</p>	<p>4</p> <p>Improve their cost of living, leading to enhanced wellbeing and better mental health</p>	<p>1-2 years</p>



# Priorities and actions: Food

## **PRIORITY 1. Improve residents from diverse backgrounds access to healthy, affordable, and sustainable food within underprivileged areas**

### **OUR ORGANISATION ACTIONS:**

- a. Weekly Healthy Green Food Hubs – Key Focus Areas
- b. Provide low-cost, nutritious events tailored to diverse cultural needs
- c. Engage community cooks from different backgrounds to share recipes
- d. Future partnerships and growth
  - Seek funding from WECA, Bristol City Council, and health-focused charities.
  - Expand to more diverse communities (Bangladeshi, Somali, Chinese, African)

### **OUR COMMUNITY ACTIONS:**

- a. Strengthen partnerships and collaboration - creating more community gardens and planting more fruit and vegetable
- b. Actively join One Green Kitchen's discussion groups and events or organised by the local groups.
- c. Expand affordable and culturally inclusive food options

### **CITYWIDE / OTHER STAKEHOLDERS ACTIONS:**

- a. Set up a Stronger Business-Community Partnership network– increased local business involvement in food hubs.
- b. Promoting more sustainable food systems – Encouraging donations, waste reduction, and ethical sourcing

## **PRIORITY 2. Expand affordable and culturally inclusive food options**

### **OUR ORGANISATION ACTIONS:**

- a. Empower women and elderly from less representative groups to co-design food initiatives that reflect their needs

### **OUR COMMUNITY ACTIONS:**

- a. Establish more diverse facilities across the city to improve access to culturally appropriate goods and services such as:
  - Partnering with local suppliers and community farms to stock culturally diverse produce
  - Hosting community forums or exchange visits to learn from successful models (e.g Hartcliff) in different areas
  - Volunteers to coordinate bulk orders, manage costs, and distribute goods efficiently

### **CITYWIDE / OTHER STAKEHOLDERS ACTIONS:**

- a. Better policy and funding support e.g. using business feedback to advocate for funding and policy changes



# Priorities and actions: Food

## **PRIORITY 3. Promote environmentally sustainable eating habits**

### **OUR ORGANISATION ACTIONS:**

- a. Host interactive sessions with local health professionals

### **OUR COMMUNITY ACTIONS:**

- a. Cultural Cooking Sessions and Green Workshops: hosting regular sessions that combine traditional recipes with health education and climate-friendly practices, led by community members themselves.
- b. Accessible Learning Materials: developing easy-to-understand multilingual leaflets, posters, and activity packs to ensure no one is left behind in our community education efforts.

### **CITYWIDE / OTHER STAKEHOLDERS ACTIONS:**

- a. Launch national campaigns encouraging plant-based diets, seasonal eating, and reduced food waste.
- b. Provide training and resources for food businesses to transition to more sustainable practices.
- c. Policy and funding support e.g. support local food producers and short supply chains to reduce emissions from transport and packaging

## **PRIORITY 4. Strengthen community engagement and education**

### **OUR ORGANISATION ACTIONS:**

- a. Cultural cooking sessions and green workshops: hosting regular sessions that combine traditional recipes with health education and climate-friendly practices, led by community members themselves
- b. Accessible learning materials: developing easy-to-understand multilingual leaflets, posters, and activity packs to ensure no one is left behind in our community education efforts

### **OUR COMMUNITY ACTIONS:**

- a. Community-led activities, where local champions and volunteers take the lead in engaging their neighbours

### **CITYWIDE / OTHER STAKEHOLDERS ACTIONS:**

- a. Investing in grassroots initiatives e.g. fund community-led organisations, CICs, and local champions who already have trusted relationships within underserved communities
- b. Provide long-term, flexible grants that allow for creativity and co-designed projects
- c. Government should embed community voices—especially from underrepresented groups—into policy and programme design through inclusive consultations, accessible engagement, and genuine partnership with local leaders



# Priorities and actions: Food

## **PRIORITY 5. Empower local food businesses in underrepresented communities, a holistic approach is needed—beyond financial support**

### **OUR ORGANISATION ACTIONS:**

- a. Quarterly Community Climate Breakfast and Food Hub that brings together local businesses, residents, and stakeholders.
- b. Enhance a safe shopping experience by partnering with local businesses to support vulnerable groups
  - Home delivery service – Collaborate with local shops and volunteers to deliver essentials to disabled or vulnerable individuals
  - Group shopping events – Organise evening group shopping trips for those who feel unsafe shopping alone

### **OUR COMMUNITY ACTIONS:**

- a. Community centres/facilities - offering shared equipment, kitchen spaces, or mobile units for the small food businesses e.g community cooks to reduce startup costs and operational barriers.
- b. To promote diverse food cultures through markets and events, helping minority-run businesses gain community trust and recognition

### **CITYWIDE / OTHER STAKEHOLDERS ACTIONS:**

- a. To invest in skills training, access to shared facilities, culturally appropriate business mentoring, and partnerships that connect them to community-led initiatives and local markets.
- b. Being part of Bristol Food Network aligns well with the goal of making culturally sensitive food more accessible

**'It has been incredibly fulfilling to express my thoughts and be part of meaningful discussions. I look forward to integrating these ideas into real action, contributing to a greener, more sustainable community. This experience has given me both confidence and inspiration to make a difference!'**



# Priorities: Nature

## Scoring of priorities

1 - Very Low, 2 - Low, 3 - Moderate, 4 - High, 5 - Very high / significant

PRIORITY	POTENTIAL COLLABORATORS + STAKEHOLDERS	RESOURCE: COST	RESOURCE: PEOPLE	IMPACT: CARBON	IMPACT: COMMUNITY	TIMESCALE
<p>1. Ensure well-maintained parks and open spaces in underprivileged areas</p>	<ul style="list-style-type: none"> <li>Bristol City Council</li> <li>WECA</li> <li>Local community groups</li> </ul>	4	3	<p>4</p> <p>Better habitat for local wildlife</p> <p>More trees planted</p>	<p>5</p> <p>Increase sense of community pride in the areas in which people live</p>	3-5 years
<p>2. Ensure inclusive and diverse representation in future green spaces planning and development</p>	<ul style="list-style-type: none"> <li>Bristol City Council</li> <li>WECA</li> <li>Local community groups</li> </ul>	4	3	<p>4</p> <p>Indirectly influence on future green space vision</p>	<p>5</p> <p>Improve the local community's quality of life and wellbeing</p>	1-2 years
<p>3. Ensure community benefits from land given to commercial developers</p>	<ul style="list-style-type: none"> <li>Policy makers</li> <li>The local and centre of government</li> <li>Bristol City Council</li> <li>WECA</li> <li>Local community groups</li> </ul>	4	4	<p>4</p> <p>Indirectly influence on future green space vision</p>	<p>5</p> <p>Improve the local community's quality of life and wellbeing</p>	3-5 years



# Priorities and actions: Nature

## **PRIORITY 1. Ensure well-maintained parks and open spaces in underprivileged areas**

### **OUR ORGANISATION ACTIONS:**

- a. Create a welcoming space for local residents e.g. community climate breakfast and food hubs (Quarterly)
- b. Connect with St Pauls Community Garden and support more the local community to access the garden
- c. To ensure nature remains a priority while aligning with other key areas of the plan, actions should be realistic, interconnected, and inclusive

### **OUR COMMUNITY ACTIONS:**

- a. Partner with corporate sponsors for funding and maintenance support
- b. Organise volunteer clean-up days to maintain parks and encourage community ownership

### **CITYWIDE / OTHER STAKEHOLDERS ACTIONS:**

- a. Require developers to sign legally binding agreements (e.g., Section 106 agreements, Community Benefit Clauses) that ensure community investment. Ensure a percentage of profits is reinvested into local infrastructure, parks, and social programs.
- b. Specify that developers must fund or provide affordable housing, schools, or public amenities.
- c. Mandate that a percentage of land must be allocated for public parks, gardens, and open spaces

## **PRIORITY 2. Ensure inclusive and diverse representation in future green spaces planning and development**

### **OUR ORGANISATION ACTIONS:**

- a. Linking nature with transportation priorities
- b. Advocate for accessible public transport routes connecting vulnerable groups to natural outdoor spaces

### **OUR COMMUNITY ACTIONS:**

- a. Involve local residents in park design, ensuring their needs (e.g., playgrounds, seating, accessibility) are met

### **CITYWIDE / OTHER STAKEHOLDERS ACTIONS:**

- a. Create internship and apprenticeship programs in park management.
- b. To embed co-design processes, engaging underrepresented communities through culturally appropriate outreach
- c. To work in partnership with trusted local organisations to collect the voices from underrepresented communities



# Priorities and actions: Nature

## PRIORITY 3. Ensuring community benefits from land given to commercial developers

### OUR ORGANISATION ACTIONS:

- a. Connecting nature with building and business priorities e.g propose to the developers to commit to public green spaces in new housing projects or encourage rooftop gardens and sustainable design in city planning

### OUR COMMUNITY ACTIONS:

- a. Push for local government investment in neglected parks

### CITYWIDE / OTHER STAKEHOLDERS ACTIONS:

- a. Require developers to sign legally binding agreements (e.g., Section 106 agreements, Community Benefit Clauses) that ensure community investment. Ensure a percentage of profits is reinvested into local infrastructure, parks, and social programs.
- b. Specify that developers must fund or provide affordable housing, schools, or public amenities.
- c. Mandate that a percentage of land must be allocated for public parks, gardens, and open spaces

**'We need real action—not just words—to protect our environment and create sustainable solutions for generations to come. By working together, we can make a difference, ensuring cleaner air, greener spaces, and a healthier planet for everyone.'**



# Priorities: Waste and Resources

## Scoring of priorities

1 - Very Low, 2 - Low, 3 - Moderate, 4 - High, 5 - Very high / significant

PRIORITY	POTENTIAL COLLABORATORS + STAKEHOLDERS	RESOURCE: COST	RESOURCE: PEOPLE	IMPACT: CARBON	IMPACT: COMMUNITY	TIMESCALE
<p>1. Inclusive recycling policies and support for vulnerable groups, new migrants, and refugees</p>	<ul style="list-style-type: none"> <li>Skills development partners (e.g, Set Square, Life Cycle, Bristol Textile Quarter)</li> <li>Bristol Waste BCC</li> <li>Charity shops and local community groups</li> <li>Local NGOs &amp; refugee organizations</li> </ul>	<p>3</p> <p>Provide grants &amp; incentives for sustainable programs</p>	<p>3</p> <p>Set a multi-stakeholder approach</p>	<p>4</p> <p>Higher Recycling Rates = Less Waste in Landfills</p> <p>Reducing Plastic Pollution &amp; Micro plastics</p>	<p>4</p> <p>Circular economy and sustainable consumption: Supporting the cost of living especially for vulnerable groups, low-income households, and new migrants</p>	<p>1-2 years</p>
<p>2. Reduce litter and waste on streets and shared spaces</p>	<ul style="list-style-type: none"> <li>Bristol City Council Bristol Waste City to Sea Local groups (Tidy BS5, etc.)</li> <li>Religious and community groups</li> <li>Local schools</li> <li>Local businesses</li> <li>Plastic Pollution</li> <li>One City Ecological</li> <li>Emergency Strategy</li> </ul>	<p>3</p> <p>Initial costs for training and early engagement low</p> <p>Volunteer Training for Community Support &amp; Enforcement</p>	<p>3</p> <p>Stakeholder engagement and coordination across sectors on long time challenge</p>	<p>4</p> <p>Protect nature, wildlife, and public health while also reducing carbon emissions</p>	<p>4</p> <p>Clean spaces promote healthier lifestyles and reduce air pollution-related illnesses</p> <p>Improve the physical environment—it also boosts the social and economic reputation of underprivileged areas</p>	<p>1-2 years</p>



# Priorities: Waste and Resources

## Scoring of priorities

1 - Very Low, 2 - Low, 3 - Moderate, 4 - High, 5 - Very high / significant

PRIORITY	POTENTIAL COLLABORATORS + STAKEHOLDERS	RESOURCE: COST	RESOURCE: PEOPLE	IMPACT: CARBON	IMPACT: COMMUNITY	TIMESCALE
<p>3. Expanding recycling and waste awareness in economically deprived areas and schools</p>	<ul style="list-style-type: none"> <li>Schools</li> <li>Youth provision groups</li> <li>Adult learning and skills development partners (e.g, Set Square, Life Cycle, Bristol Textile Quarter)</li> <li>Bristol Waste BCC</li> <li>Charity shops and local community groups</li> <li>Supermarkets</li> <li>WECA</li> <li>Department of Education</li> </ul>	<p>4</p> <p>Sustainable funding for waste education in schools and low-income neighborhoods</p>	<p>3</p> <p>Facilitation / skills training for teachers</p> <p>Facilitation skills training for the local community groups/representative</p> <p>Facilitation skills for volunteers</p>	<p>4</p> <p>Reducing landfill waste and microplastics</p> <p>positive impact on consumption of using plastic bags/package</p>	<p>3</p> <p>Positive impact on people's comfort in their neighborhood as less fly tipping giving a sense of a more secure neighbourhood</p> <p>Potential for reduced costs due to increased awareness of waste/ consumption costs</p>	<p>3-5 years</p>



# Priorities and actions: Waste and Resources

## **PRIORITY 1. Inclusive recycling policies and support for vulnerable groups, new migrants, and refugees**

### **OUR ORGANISATION ACTIONS:**

- a. To gather views and opinions from our target audiences through our future quarterly Climate Action Café mornings
- b. To Arrange a variety of workshops, such as Q&A panels, to invite councillors and professionals to actively engage with the local community
- c. To become the point of contact for collecting views or consultations on waste management and recycling

### **OUR COMMUNITY ACTIONS:**

- a. Create easy-to-understand visual guides and distribute them in community centres, places of worship, and online
- b. Partner with schools to introduce recycling awareness programs for children and families

### **CITYWIDE / OTHER STAKEHOLDERS ACTIONS:**

- a. Develop inclusive recycling policies that address the needs of vulnerable groups, ensuring flexibility and accessibility
- b. Introduce financial incentives such as subsidies or tax breaks for businesses and organisations that promote inclusive recycling efforts
- c. Provide free or subsidized recycling bins to low-income households and community centres

## **PRIORITY 2. Reduce litter and waste on streets and shared spaces**

### **OUR ORGANISATION ACTIONS:**

- a. To organise volunteers to create multilingual posters and informational materials for the Clear Street/ Neighbourhood campaign
- b. A hub for distributing leaflets and organising litter-picking activities

### **OUR COMMUNITY ACTIONS:**

- a. Provide free or subsidised recycling bins for low-income households
- b. Ensure recycling stations have clear signage in multiple languages

### **CITYWIDE / OTHER STAKEHOLDERS ACTIONS:**

- a. Increase recycling drop-off points in areas where vulnerable communities reside.
- b. To offer a free, accessible, and community-driven solution for the collection of bulky waste, particularly in underrepresented areas like St. Paul's (Bristol Waste)



# Priorities and actions: Waste and Resources

## **PRIORITY 3. Expanding recycling & waste awareness in economically deprived areas and schools**

### **OUR ORGANISATION ACTIONS:**

- a. To form partnerships with other community groups to conduct campaign and workshops to raise awareness

### **OUR COMMUNITY ACTIONS:**

- a. To shorten the gap of mistrust between local residents and the local authority, and encourage them to report commercial crimes like littering or fly-tipping

### **CITYWIDE / OTHER STAKEHOLDERS ACTIONS:**

- a. Fund multilingual awareness campaigns to educate new migrants and vulnerable groups on recycling rules and benefits.
- b. Support school programs to teach children from diverse backgrounds about waste management and sustainability.
- c. Fund local community recycling initiatives to encourage grassroots participation.
- d. Bristol waste to provide translated information on recycling rules

**'I want to be involved in the Climate Action Plan because it has never been more urgent than now. The impacts of climate change are affecting our communities, our health, and our future.'**



# Priorities: Energy

## Scoring of priorities

1 - Very Low, 2 - Low, 3 - Moderate, 4 - High, 5 - Very high / significant

PRIORITY	POTENTIAL COLLABORATORS + STAKEHOLDERS	RESOURCE: COST	RESOURCE: PEOPLE	IMPACT: CARBON	IMPACT: COMMUNITY	TIMESCALE
1. Affordability of energy bills	<ul style="list-style-type: none"> <li>Bristol City Council</li> <li>WECA</li> <li>Local Community Groups</li> <li>National/Local Energy Groups</li> </ul>	4	4	3 Affordable heating	3 Reduction in energy bills for residents and a reduced carbon footprint  But also to improve residents' quality life	3-5 years
2. Access to money saving energy alternative solution (solar panels or other power companies)	<ul style="list-style-type: none"> <li>Bristol City Council</li> <li>WECA</li> <li>Local Community Groups</li> <li>National/Local Energy Groups</li> </ul>	5	3	5 Reduce their energy consumption and carbon footprint	5 Affordable energy-saving solutions: Improving cost of living and well being	3-5 years
3. Making energy management workshops and information accessible	<ul style="list-style-type: none"> <li>Local Community Groups</li> <li>National/Local Energy Groups</li> <li>Colleges and local training providers</li> </ul>	3	3	5 Raising awareness and knowledge of energy management to save the planet	5 Reduced fuel poverty  Improved household finances	1-2 years



# Priorities and Actions: Energy

## **PRIORITY 1. Affordability of energy bills**

### **OUR ORGANISATION ACTIONS:**

- a. Running Quarterly Climate Café/Events to engage target audiences and ensure initiatives are inclusive and accessible
- b. Use interactive workshops, Q&A panels, and storytelling sessions to gather insights and encourage participation
- c. Invite local leaders, policymakers, and sustainability experts to address community concerns and share solutions
- d. Apply for City Leap funds to support the target audiences through sustainable energy use, and survey, with support from workshops, the Bristol Energy Help Desk, and Retrofit funding

### **OUR COMMUNITY ACTIONS:**

- a. Support Workshops, school programs, and community campaigns can teach energy-saving techniques
- b. Share feedback with Bristol Energy Network to support CSE's Smart & Fair project, promoting sustainable and fair energy solutions for communities

### **CITYWIDE / OTHER STAKEHOLDERS ACTIONS:**

- a. Ensure vulnerable groups automatically benefit from energy discounts without needing to apply
- b. Establishing local subsidies or cooperatives to help households afford renewable energy solutions like solar panels
- c. Develop a more effective system to determine priority and eligibility for financial support and grant applications

## **PRIORITY 2. Access to money-saving energy alternative solution (solar panels or other power companies)**

### **OUR ORGANISATION ACTIONS:**

- a. Organise energy workshops in local hubs: Teaching practical, low-cost energy-saving habits in multiple languages

### **OUR COMMUNITY ACTIONS:**

- a. Community-led initiatives to improve insulation in low-income homes can reduce heating costs significantly
- b. Introduce green energy schemes that help residents reduce energy costs without financial burden
- c. Provide sources for funding opportunities related to improving home energy use, retrofitting, and heat pumps

### **CITYWIDE / OTHER STAKEHOLDERS ACTIONS:**

- a. Ensure new housing meets high energy efficiency standards.
- b. Work with energy companies to provide fair, off-peak pricing to low-income households



# Priorities and Actions: Energy

## PRIORITY 3. Making energy management workshops and information accessible

### OUR ORGANISATION ACTIONS:

- a. To organise energy workshops with language aids ensures inclusivity and allows vulnerable groups, migrants, and elderly residents to fully engage

### OUR COMMUNITY ACTIONS:

- a. Provide guidance for those needing extra assistance, such as elderly residents, those with disabilities and with language barriers
- b. Allow participants to share experiences and suggest improvements for inclusive services

### CITYWIDE / OTHER STAKEHOLDERS ACTIONS:

- a. Partner with community centers/organisations e.g. One Green Kitchen and trusted local groups (e.g., food hubs and libraries) to host free energy-saving workshops
- b. Create a free helpline with different language aids for vulnerable individuals needing tailored energy advice
- c. Provide one-on-one energy assessments for low-income households to offer personalised solutions
- d. To raise awareness of the Centre for Sustainable Energy (CSE) and its services, including funding, training, advice helplines, and interpretation services for vulnerable groups

**'Our community must reconnect with the earth – to plant, touch, and enjoy the fruits of our labor. We are not owners of this land but caretakers, borrowing it from future generations. It is our responsibility to protect and nurture it for them.'**



# Priorities: Business and Skills

## Scoring of priorities

1 - Very Low, 2 - Low, 3 - Moderate, 4 - High, 5 - Very high / significant

PRIORITY	POTENTIAL COLLABORATORS + STAKEHOLDERS	RESOURCE: COST	RESOURCE: PEOPLE	IMPACT: CARBON	IMPACT: COMMUNITY	TIMESCALE
<p>1. Ensure diversity of people in green sector</p>	<ul style="list-style-type: none"> <li>Green Employers Activities and campaigners</li> <li>City of Bristol College</li> <li>Colleges/FE</li> <li>WECA</li> <li>Construction industry</li> <li>Business West</li> <li>Business in the Community</li> <li>Bristol City Council</li> <li>Technical and delivery partners</li> </ul>	<p>4</p> <p>Subsidised funding to provide training programs for individuals who lack the necessary skills</p>	<p>4</p> <p>Green Employers schools, and community groups</p>	<p>1</p> <p>Indirectly supporting the carbon footprint reduction: A future vision</p>	<p>5</p> <p>Increasing employment and reducing household costs through green jobs, in particular for the less representative communities</p> <p>Improved mental health/wellbeing</p> <p>Opportunities for local investment role models</p> <p>Improved opportunities for children and young people</p>	<p>1-2 years</p> <p>Collect the feedback and the planning</p> <p>3-5years</p>
<p>2. Ensure the voices of less represented communities in green policy and education programme planning</p>	<ul style="list-style-type: none"> <li>Policy makers</li> <li>Big businesses</li> <li>Employers central and local government</li> <li>Activists and campaigners</li> <li>WECA Business</li> <li>West Business in the Community</li> <li>WECA</li> <li>Bristol City Council</li> </ul>	<p>1</p>	<p>5</p>	<p>1</p> <p>Indirectly supporting the carbon footprint reduction: A future vision</p>	<p>5</p> <p>Indirectly supporting the carbon footprint reduction: A future vision</p> <p>Cultural perspectives on sustainability</p> <p>Inclusive green jobs and innovation</p> <p>Equitable access to green initiatives</p>	<p>3-5 years</p>



# Priorities: Business and Skills

## Scoring of priorities

1 - Very Low, 2 - Low, 3 - Moderate, 4 - High, 5 - Very high / significant

PRIORITY	POTENTIAL COLLABORATORS + STAKEHOLDERS	RESOURCE: COST	RESOURCE: PEOPLE	IMPACT: CARBON	IMPACT: COMMUNITY	TIMESCALE
<p>3. Ensure equality and inclusion in green job opportunities</p>	<ul style="list-style-type: none"> <li>Local community groups</li> <li>National / local energy groups training providers</li> </ul>	<p>1</p>	<p>5</p>	<p>2</p> <p>More residents trained within the green economy</p> <p>Supporting the local economy (or circular economy)</p>	<p>5</p> <p>Increasing employment and reducing household costs through green jobs, in particular for the less representative communities</p>	<p>1-2 years</p>



# Priorities and Actions: Business and Skills

## **PRIORITY 1. Ensure diversity of people in green sector**

### **OUR ORGANISATION ACTIONS:**

- a. Host information sessions in community centres, places of worship, and local events to introduce green jobs and initiatives
- b. Use trusted community leaders and bilingual outreach workers to share information in different languages
- c. To establish a working partnership with ACH, SPARKS, or other enterprise associations to support women from less representative communities in setting up social enterprises

### **OUR COMMUNITY ACTIONS:**

- a. Establish diversity advisory panels with representatives from global majority, migrant, and refugee communities.
- b. Involve local grassroots organisations in policy development.
- c. Require government bodies and NGOs to have quotas for diverse representation in climate committees

### **CITYWIDE / OTHER STAKEHOLDERS ACTIONS:**

- a. Offer funding and grants for minority-led green businesses and initiatives.
- b. Create networks and business hubs to support entrepreneurs from underrepresented backgrounds

## **PRIORITY 2. Ensure the voices of less represented communities in green policy and education programme planning**

### **OUR ORGANISATION ACTIONS:**

- a. Host quarterly climate cafés in underrepresented neighborhoods
- b. Provide translation services to ensure non-English speakers can fully participate

### **OUR COMMUNITY ACTIONS:**

- a. Train and support community leaders to advocate for green policies
- b. Encourage and support migrants, ethnic minorities, and low-income residents to apply for environmental workshops
- c. Support the grass groups or individuals to seek funding applications which are simple and accessible to non-experts leadership roles.

### **CITYWIDE / OTHER STAKEHOLDERS ACTIONS:**

- a. Require policymakers to publish transparent reports on diversity in environmental decision-making.
- b. Make climate justice a core part of green policies, ensuring disadvantaged communities are included and supported in the transition to a sustainable future



# Priorities and Actions: Business and Skills

## **PRIORITY 3. Ensure equality and inclusion in green job opportunities**

### **OUR ORGANISATION ACTIONS:**

- a. Support entrepreneurs/individual from marginalised communities to start sustainable businesses
- b. To apply for funding or support for hiring a premises of the One Green Kitchen community kitchen and include women from less representative communities in using the facilities as well as providing working opportunities and adapting green skills e.g Green Recipes for Healthy Heart programme
- c. Form partnerships with other schemes e.g. Bristol Good Food and Mission Net Zero

### **OUR COMMUNITY ACTIONS:**

- a. Provide vocational programs that combine sustainability education with hands-on experience.
- b. Advertise green sector jobs in community centre, places of workshop, and ethnic media outlets

### **CITYWIDE / OTHER STAKEHOLDERS ACTIONS:**

- a. Advocate for green job policies that prioritise social equity.
- b. Require publicly funded green projects to hire a certain percentage of people from minoritised groups
- c. Develop tax incentives for businesses that invest in diverse hiring and community training programs.
- d. To apply for funding and guidance support from the BCC Economic Development Team, particularly in the area of food economy development, for example One Green Kitchen community kitchen.

**'I want this project to turn our discussions into real action – creating a shared kitchen where minority women can celebrate traditions equally.'**

**A space where events like Kurdish New Year are honoured, food brings people together, and everyone feels a true sense of belonging.'**



# Priorities: Homes and Buildings

## Scoring of priorities

1 - Very Low, 2 - Low, 3 - Moderate, 4 - High, 5 - Very high / significant

PRIORITY	POTENTIAL COLLABORATORS + STAKEHOLDERS	RESOURCE: COST	RESOURCE: PEOPLE	IMPACT: CARBON	IMPACT: COMMUNITY	TIMESCALE
1. Reinvesting in existing housing to address cold home issues	<ul style="list-style-type: none"> <li>Bristol City Council</li> <li>Local community groups</li> <li>National / local energy groups</li> <li>One City Strategy project</li> </ul>	5	4	5 Reduce carbon footprint and save the planet	5 Improving residents' quality of life and wellbeing by addressing cold homes	3-5 years
2. Enforce stricter energy efficiency regulations and home energy improvement for landlords, ensuring all rental properties	<ul style="list-style-type: none"> <li>Bristol City Council</li> <li>Local community groups</li> <li>National / local energy groups</li> </ul>	4	4	5 Improving EPC rating can reduce carbon footprint and save the planet	5 Improving residents' quality of life and wellbeing by addressing cold homes	1-2 years
3. Insulation of housing to save money on bills	<ul style="list-style-type: none"> <li>Bristol City Council</li> <li>WECA</li> <li>Local community groups</li> <li>National / local energy groups</li> <li>Private landlords</li> <li>Housing associations</li> </ul>	2	4	5 Increased/improved insulation on all housing stock	5 More comfortable living spaces, improving mental and physical wellbeing	1-2 years for pilot action 3-5 years



# Priorities and Actions: Homes and Buildings

## **PRIORITY 1. Reinvesting in existing housing to address cold home issues**

### **OUR ORGANISATION ACTIONS:**

- a. To improve housing conditions, particularly for vulnerable groups, securing funding for expert-led surveys and home visits is essential
- b. Through the community climate cafe to get the views and insights and these assessments can identify cold home issues, insulation gaps, and energy inefficiencies, leading to targeted improvements

### **OUR COMMUNITY ACTIONS:**

- a. Support Energy companies and the local groups providing funding for green projects

### **CITYWIDE / OTHER STAKEHOLDERS ACTIONS:**

- a. Local and national government programs: Energy efficiency and fuel poverty grants
- b. Strengthen energy efficiency standards for new and existing homes

## **PRIORITY 2. Enforce stricter energy efficiency regulations and home energy improvement for landlords, ensuring all rental properties**

### **OUR ORGANISATION ACTIONS:**

- a. To organise workshops to raise awareness: educate residents on energy-saving strategies with different language versions

### **OUR COMMUNITY ACTIONS:**

- a. Raise awareness of energy efficiency within the community with different language poster and leaflets
- b. To be involved in energy champions workshops and work collaboratively with Bristol Energy Network

### **CITYWIDE / OTHER STAKEHOLDERS ACTIONS:**

- a. Environmental and housing charities: Organisations supporting sustainability and social housing
- b. Community interest funding: Local council grants for community-led housing improvements
- c. Bristol City Council to put new standards on energy efficiency new housing development
- d. To encourage commercial developers to adopt 10% biodiversity net gain and potentially adopt enforcement actions to ensure compliance

## **PRIORITY 3. Insulation of housing to save money on bills**

### **OUR ORGANISATION ACTIONS:**

- a. To become a host for other organisations to share advice and act as a conduit for connecting them with vulnerable groups

### **OUR COMMUNITY ACTIONS:**

- a. Organise volunteer days to help elderly or low-income residents DIY insulation

### **CITYWIDE / OTHER STAKEHOLDERS ACTIONS:**

- a. Provide grants or local new schemes to support training courses and DIY Insulation
- b. To shorten the gap for new migrants or refugees staying in council accommodation and provide them with integration training



# Priorities: Adaptation and Resilience

## Scoring of priorities

1 - Very Low, 2 - Low, 3 - Moderate, 4 - High, 5 - Very high / significant

PRIORITY	POTENTIAL COLLABORATORS + STAKEHOLDERS	RESOURCE: COST	RESOURCE: PEOPLE	IMPACT: CARBON	IMPACT: COMMUNITY	TIMESCALE
1. Contribute to the emergency plan for adaptation and resilience - a multi-stakeholder approach	<ul style="list-style-type: none"> <li>• Policy makers</li> <li>• Central and local government</li> <li>• WECA Business</li> <li>• West Business in the Community</li> <li>• WECA</li> <li>• Bristol City Council</li> <li>• Community &amp; Civil Society Organisation</li> </ul>	4	4	4	5	1-2 years to collect the feedback and the planning  3-5 years
2. A safe space in the context of climate adaptation and resilience e.g.shelter, resources, and support for communities	<ul style="list-style-type: none"> <li>• Community and Civil Society Organisations</li> <li>• WECA</li> <li>• Bristol City Council</li> </ul>	4	4	4	5	1-2 years
3. Develop heat resilience strategies to protect vulnerable populations, infrastructure, and ecosystems	<ul style="list-style-type: none"> <li>• Policy makers</li> <li>• Central and local government</li> <li>• WECA Business</li> <li>• West Business in the Community</li> <li>• WECA</li> <li>• Bristol City Council</li> <li>• Community &amp; Civil Society Organisation</li> </ul>	5	4	3	5	1-2 years to collect the feedback and the planning  3-5 years



# Priorities and Actions: Adaptation and Resilience

## **PRIORITY 1. Contribute to the emergency plan for adaptation and resilience - a multi-stakeholder approach**

### **OUR ORGANISATION ACTIONS:**

- a. Promote inclusive participation and awareness workshops
- b. Partnership with universities to conduct research-based solutions and risk assessments

### **CITYWIDE / OTHER STAKEHOLDERS ACTIONS:**

- a. Local governments and urban planners – Identify and upgrade existing infrastructure

## **PRIORITY 2. A safe space in the context of climate adaptation and resilience e.g. shelter, resources, and support for communities**

### **OUR ORGANISATION ACTIONS:**

- a. A quarterly meet up/after school clubs etc easily reachable by vulnerable groups (elderly, disabled, women, children)
- b. Stocked with food, water, medical kits, power backup or hot meals parcels provided warm space and cool space connect
- c. Link with the nature green space connecting with cool spaces community centres

### **OUR COMMUNITY ACTIONS:**

- a. Public buildings (schools, community halls, libraries) equipped for emergency use
- b. Offer temporary shelter, food, and medical assistance during extreme events

### **CITYWIDE / OTHER STAKEHOLDERS ACTIONS:**

- a. Develop localised emergency response plans for extreme weather events
- b. Train community members in disaster preparedness (e.g., First Aid, evacuation drills)
- c. Establish emergency shelters with climate adaptation features (cooling zones, solar-powered facilities)
- d. Secure funding for climate resilience projects from public and private sectors

## **PRIORITY 3. Develop heat resilience strategies to protect vulnerable populations, infrastructure, and ecosystems**

### **OUR ORGANISATION ACTIONS:**

- a. Running Quarterly Climate Café/Events to engage target audiences and ensure initiatives are inclusive and accessible

### **OUR COMMUNITY ACTIONS:**

- a. Community leaders raise awareness and support vulnerable populations

### **CITYWIDE / OTHER STAKEHOLDERS ACTIONS:**

- a. Heat Resilience Policies – establish heat action plans at the local and national levels
- b. Financial Support for vulnerable communities – subsidies for cooling solutions and home improvements

# Acknowledgements

We would like to especially thank the women who have been involved and engaged, as well as the organisations, for their invaluable contributions in shaping this plan.

- The members of One Green Kitchen C.I.C., in particular, Carr House Hub and the Chinese/Hong Kong Elderly Art Club, for taking the time to share their ideas.
- The ladies of the steering group, who made great efforts to join discussions and provided valuable input into the plan's development.
- The Bangladeshi Bristol Women's Group and all their committee members, with special thanks to Asma Qadar, the secretary of the group, and Tasnim M Chowdhury, assistant secretary, for providing invaluable insights and organising the engagement workshops.
- The Pakistani Welfare Organisation, with special thanks to their chairman, Shenaz Dar and other committees members.
- A special thanks to Jah Caballero, mentor from ACH, and the staff members and volunteers from One Green Kitchen C.I.C., including Debby, Dr. Millie, Grace and Mr. & Mrs. Cheung.
- The Community Climate Action Project partners: Bristol Climate & Nature Partnership (Rachel Mohun and Amy Harrison), Bristol City Council (Mark Leach), and CSE (Harriet Sansom).
- All the Community Climate Action City partners who contributed to the Peer Review Roundtable event.
- A huge thanks to all the guests from various sectors who participated in the priorities discussion.
- The Cohort 3 partners for their support and collaboration.
- The National Lottery Fund for providing funding to support this work.

We deeply appreciate everyone's contributions and dedication to making this plan a success.





Let's make change with One Green Kitchen



# Evaluation and wider objectives

**This plan was developed as part of the Bristol Community Climate Action Project coordinated by Bristol Climate & Nature Partnership, and supported by Bristol City Council and the Centre for Sustainable Energy.**

The evaluation objectives of the project are:

1. Communities will better contribute to Bristol's 2030 carbon neutral and nature recovery ambitions.
2. There is wider and deeper climate change engagement and leadership in diverse communities.
3. Climate community action will support transitions towards a more just and inclusive society.
4. Community climate action will support increased community resilience to immediate climate and social challenges.
5. Climate community action is recognised as an essential strategic approach towards achieving net zero goals in Bristol, the West of England sub-region (WECA area) and nationally.
6. Communities in Bristol and beyond are inspired and supported to take community-led climate action.

The development phase of the Community Climate Action Project (October 2020 – April 2022) focused on the development of six coproduced community climate action plans by six Bristol community organisations (ACH, Ambition Lawrence Weston, Eastside Community Trust, Bristol Disability Equality Forum, Heart of BS13 and Lockleaze Neighbourhood Trust) and extensive evaluation data was collected during the project through a suite of 10 surveys using the online Makerble platform.

An insights report was produced at the end of the development phase of the project (April 2022), and a full evaluation report will be produced at the end of the programme (September 2025).

The Community Climate Action Project has been supported by the National Lottery Community Fund's Climate Action Fund. The overall objectives/outcomes of the fund are:

1. More – and more diverse – people engage with climate issues and understand what climate change means for them.
2. More – and more diverse – people have hope that things can change and take action on climate change.
3. Community-led climate action initiatives grow and develop.
4. Carbon emissions are reduced through action at the local level.
5. Community-led climate action is fair and generates co-benefits for people's quality of life.
6. Learning on good practice is captured and shared.
7. The National Lottery Community Fund and others across the sector (including funders) integrate support for community-led climate action into their wider activities.
8. Evidence of increased support for climate action.
9. Local communities develop increased resilience to immediate climate impacts.

# List of community benefits



## Health & wellbeing

- Reduced fuel poverty
- Opportunities for physical activity
- Reduced noise pollution
- Reduced air pollution
- Improved dietary health
- Increased community pride
- Reduced social isolation
- Improve mental health/wellbeing

## Economy

- Job creation
- Green jobs training and apprenticeship opportunities (young people)
- Improved business efficiency
- Improved household finances
- Opportunities for skills and training
- Money retained in the local economy
- Opportunities for local investment
- Lower energy costs
- Lower energy tariffs
- Better public transport links

## Environment

- Reduced greenhouse gas emissions
- Improved green spaces
- Reduced overheating risk
- Reduced flood risk
- Increased biodiversity
- Reduced waste going to landfill
- The creation of more attractive public spaces

## Resilience

- Security in energy supply (fewer power cuts)
- Security in energy supply (less reliance on international imports)
- Food security (security in local food supply)
- Flood risk mitigation

## Community Resilience

- Security in energy supply (less power cuts)
- Security in energy supply (less reliance on international imports)
- Security in energy supply (opportunities to access renewable energy sources)
- Food security (security in local food supply)
- Food security (less food waste)
- Skill creation through volunteering and training sessions

## Society

- Reduced inequalities
- High level decision makers (ie national gov) influenced to make positive changes
- Community brought together / community cohesion
- Improved public sector finances
- Greater voice, agency, and influence of communities in climate decision-making
- Educational opportunities for children and young people

## Equalities

- Equal access
- Preventing the creation of new barriers
- Removing a barrier
- Minority voices amplified and able to influence decision-making



# List of carbon impacts

## Energy

- Hugely reduced energy demand from buildings, including heritage assets
- Smarter & more flexible management of energy demand, including storage
- Decarbonised power generation
- Decarbonised heat delivery
- Widespread, actively managed and planned carbon storage strategies
- Reduced energy demand
- Affordable heating
- Energy use is from renewable sources
- Improving all homes to EPC standard C
- Displacement of fossil fuel energy by using locally generated electricity from renewable sources

## Buildings/Housing

- Hugely reduced energy demand from buildings, including heritage assets
- New buildings and developments that achieve net zero emissions, including associated transport
- Improving all homes to EPC standard C
- Increased/improved insulation on all housing stock

## Food

- Altered dietary patterns & reduced food waste.
- Widely adopted agricultural practices that reduce emissions & increase soil carbon and protect & promote biodiversity
- Food education to reflect the needs of diverse communities
- Reduced meat (and dairy) consumption

## Waste and Consumption

- Hugely altered consumption patterns, buying less and re-using/repairing more
- Greatly increased recycling rates to achieve a circular economy model, taking plastics out of the waste stream
- Altered dietary patterns and reduced food waste.
- Less demand on shop bought edibles
- Less packaging and waste
- Safe disposal of older appliances that contain Freon Gas which depletes the ozone layer
- More food waste going to biomass production



# Glossary of key words

**Adaptation:** Process taken to adjust to the actual or expected climate and its effects

**Biodiversity:** All the different kinds of life you'll find in one area—the variety of animals, plants, fungi, and even microorganisms like bacteria that make up our natural world

**Carbon emissions:** The carbon dioxide gas that planes, cars, factories, etc. produce which contribute to climate change

**Carbon footprint:** A tool to help us understand what changes we need to make to cut our emissions. They show us which actions result in emissions, and how much

**Green jobs:** Green jobs are those which are in some way contribute to reducing the consumption of energy and raw materials, limit greenhouse gas emissions, minimise waste and pollution and protect and restore ecosystems

**Greenhouse gases:** Carbon dioxide, and other 'greenhouse gases', trap heat in the atmosphere and keep the earth warm (which is why they're called greenhouse gases). These gases, which occur naturally, make the earth a habitable place – without them it would be too cold to live here

**Just transition:** Ensuring the transition to a low carbon society/economy is equitable, that any benefits are shared widely, whilst supporting those who stand to lose out economically

**Natural habitat:** The natural environment in which a species of plant/animal/fungi etc lives

**Net zero and carbon neutral:** This means that any carbon dioxide that is emitted by the activities taking place is balanced by the same amount of carbon dioxide being absorbed from the atmosphere (sometimes achieving net-zero carbon dioxide emissions is referred to as 'carbon neutrality')

**Renewable energy:** Energy that is generated from natural processes that cannot be exhausted and is constantly renewed (including solar/sunlight, geothermal heat, wind, tides, water)

**Resilience:** The capacity to prepare for, respond to, and recover from the impacts of climate change.

**Retrofit:** The introduction of new materials, products and technologies into an existing building to reduce the energy needed to occupy/use that building

**Wildlife corridors:** A strip of natural habitat connecting populations of wildlife otherwise separated by cultivated land, roads, housing etc

**'On behalf of the Pakistani Welfare Organisation, I sincerely thank One Green Kitchen and the Bristol Climate Action Partnership for involving us in the engagement session.**

**It was a valuable opportunity to discuss key issues such as fuel poverty, food sustainability, transportation, waste, and employment.**

**We are proud that our ladies' voices have been heard and included in the action plan, and we look forward to seeing these ideas lead to positive change.'**

