



Ambition
Lawrence Weston

DECLARING OUR
CARING



Declaring our Caring

Lawrence Weston Community and
Climate Action Plan 2022-2030

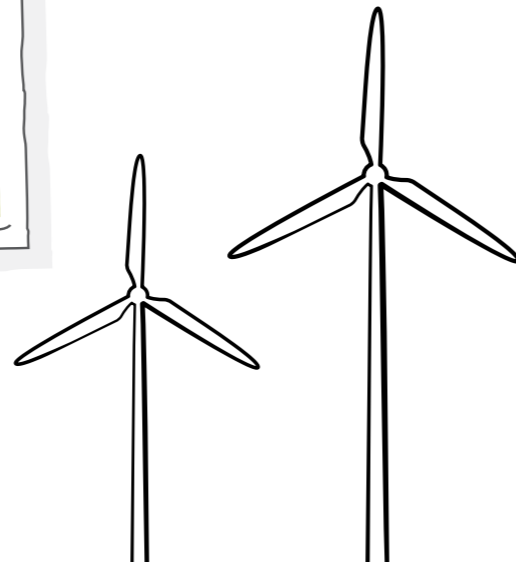


Local Trust | Big Local

www.ambitionlw.org

Contents and Introduction

- 26 ALW Community climate action plan priorities and actions
- 28 Priority 1: Transport
- 30 Priority 2: Housing/Buildings
- 32 Priority 3: Energy
- 34 Priority 4: Food
- 36 Priority 5: Waste and Consumption
- 38 Priority 6: Nature
- 40 Priority 7: Economy/Business/Jobs/Education
- 44 How our plan makes strategic connections
- 46 Glossary of Terms
- 48 Acknowledgements/Partner, Contributors and Funders



Norman Routledge
Chair of Directors for
Ambition Lawrence Weston



Opening message from our Chair of Directors: Norman Routledge

'As the Chair of Directors for Ambition Lawrence Weston, it is a great honour to present to you our community summary of our resident led community climate action plan for Lawrence Weston. We have worked hard to consult and listen to our residents to co-produce our Community Climate Action Plan which is an important document, that not only outlines our residents' aspirations to becoming carbon neutral by 2030, but highlights the co-benefits to their overall health and wellbeing with solutions to creating a healthy and sustainable future for all'.

You can view the full plan here:
www.ambitionlw.org/wp-content/uploads/2022/01/ALW-CCA-Plan-2022-2030.pdf

Introduction

We are facing a global climate and ecological emergency. We need to act now. Bristol has declared a Climate Emergency and communities have a critical role to play. In response to the Climate Emergency, Bristol has set itself the task of reducing direct and indirect carbon emissions to net zero by 2030. Bristol's One City Environmental Sustainability Board, published the **One City Climate Strategy** in February 2020, setting out a pathway of action on how Bristol can become carbon neutral and climate resilient. This plan will be Lawrence Weston's own community plan to become carbon neutral by 2030.



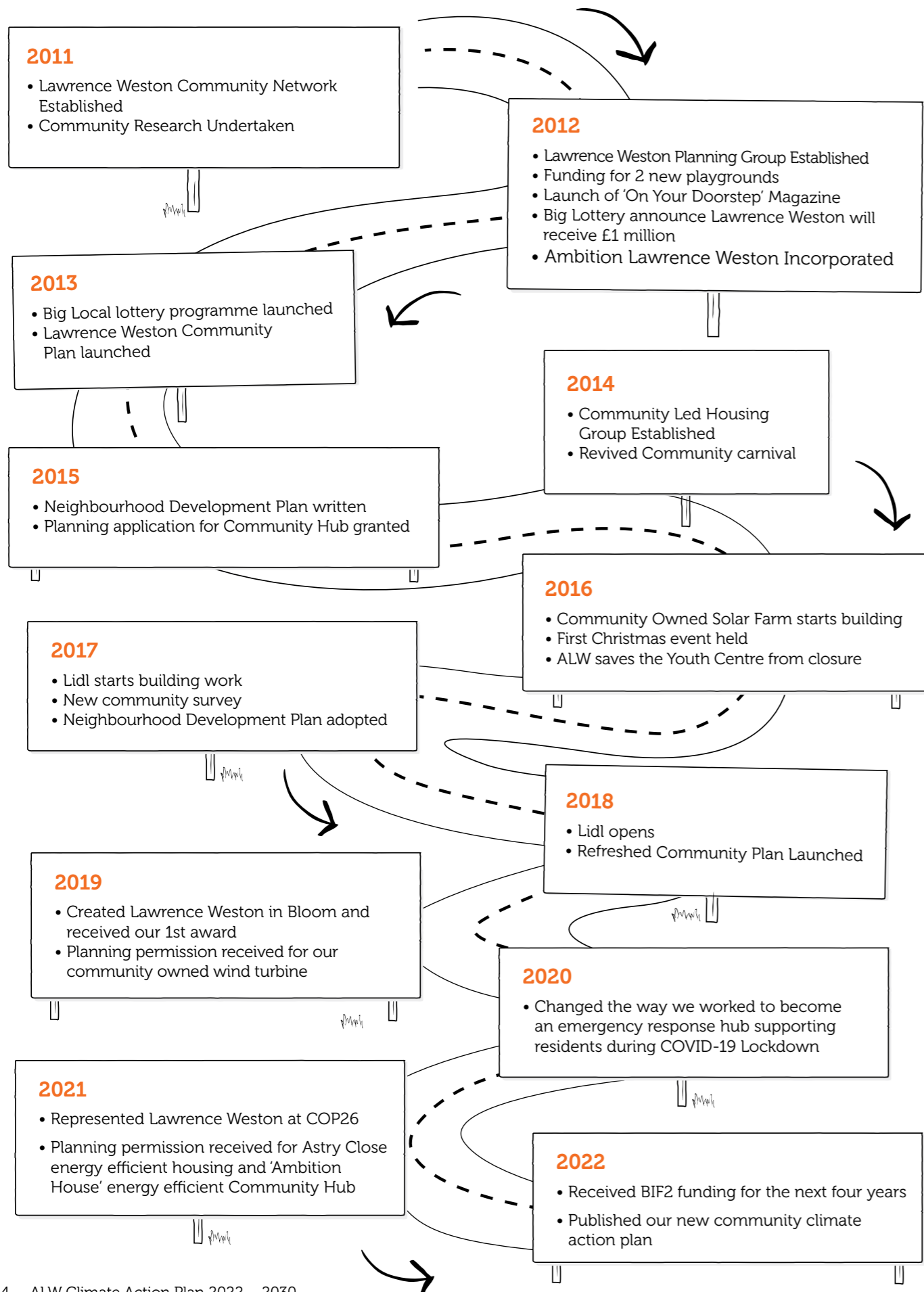
Donna
Sealey on...
**Climate
action in
Lawrence
Weston**



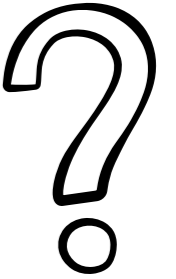
“ Thank you to everyone that took the time during our 2021 consultation to take part in the survey and activities to give us your important views and priorities for developing this plan. It was a pleasure to work with each and every one of you – and I look forward to working with residents and partners across the neighbourhood to deliver these priorities into action. Working together we really can make a difference and improve Lawrence Weston for everyone

Donna Sealey, Ambition Lawrence Weston ”

So how did we get to this point? – The journey so far



Why did we write a Community 'Climate' Plan?



While we have previously written Community plans, we are aware that for Bristol to achieve its ambitious zero carbon ambitions by 2030, the collective skills, knowledge and energy of the whole city will be needed. Communities and Community hub organisations have an important role in this. We are still focussing on improving health and wellbeing, but have now included our ambitions to become carbon neutral into this plan.




Just to assure the residents, Ambition Lawrence Weston are committed on delivering climate change, but not at the expense of meeting the residents more immediate and pressing priorities, like poverty, housing needs and access to services and employment. We are absolutely focussed on meeting the pressures our residents are experiencing right now, whilst impacting on positive climate change outcomes at the same time.



Mark Pepper, Lifelong Resident of Lawrence Weston and Ambition Lawrence Weston Development Manager



ZERO  CARBON
BY
2030

WE WANT TO ENSURE THE CREATION OF A MIXED, WELL-BALANCED COMMUNITY WITH HIGH-QUALITY, ENERGY-EFFICIENT, AFFORDABLE ACCOMMODATION



Who are we?

Ambition Lawrence Weston (ALW) is a group of residents of a defined neighbourhood and community called Lawrence Weston situated in North Bristol.

We came together to take action after a decline in services and closure of local facilities. In 2012 we formed a Charity and registered company limited by guarantee to improve living in our area. Ambition Lawrence Weston aims to reduce economic and social disadvantage experienced by many residents, increase participation in community life and to improve access to opportunities and services that residents need and deserve. Our work is directed and delivered by our residents, for our residents.

Lawrence Weston is a friendly and vibrant neighbourhood where the word "community"

really matters. It will become a community where residents of all ages, can live happy, healthy and fulfilling lives both now, and in the future. We want to ensure the creation of a mixed, well-balanced community with high-quality, energy-efficient, affordable accommodation. Residents will be able to travel safely on well-connected and affordable transport routes, and access high quality jobs, services and shops. They will be able to enjoy modern community, health and leisure facilities and an attractive environment which is safe, clean and well-maintained.

“

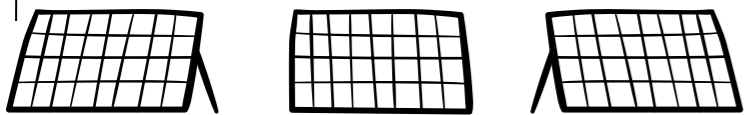
Residents have led and shaped the energy projects in Lawrence Weston to improve health and wellbeing (tackling fuel poverty) and to tackle the climate emergency. Residents, when surveyed, overwhelmingly support renewable energy and this is demonstrated by their support for a new community onshore wind turbine. If we are to truly realise the challenge of the climate emergency it must be done with people and meet health and wellbeing needs. In doing so, a healthy home is a healthy planet.

”

David Tudgey, Project Development Manager of Ambition Community Energy CiC



OUR VISION



Our vision for Lawrence Weston

Ambition Lawrence Weston's collective goal is to ensure a fair and just energy transition that benefits left behind communities to ensure we are benefitting from the positive impacts delivered when addressing climate change.

Our aim is to improve the health and wellbeing of residents and ensure they are not left even further behind than the rest of society, whilst taking equal responsibility and delivery for the climate changes needed.

By creating an accessible energy learning zone, it will demystify renewable energy, give engagement and awareness about

climate change, involve communities in the energy transition, inspire the next generations of renewable energy engineers by involving schools, parents, young people, trades, and households.

Upskilling trade's people will support the current skill shortages that is restricting the delivery of new environmentally friendly ways of construction.



Ambition Lawrence Weston is a community driven Regeneration Project for the Lawrence Weston community. Having carefully researched and published a detailed Community Development Plan (in 2013 and refreshed again in 2018), where our work is about ensuring that residents:

- Can access quality and sustainable jobs, services and shops
- Can benefit from high quality education and training throughout their lives
- Can enjoy modern community, leisure and art facilities
- Can look after their physical, mental and spiritual wellbeing with access to high quality and appropriate services and support
- Will have secure access to adequate amounts of affordable, safe, nutritious and culturally appropriate foods
- Understand their rights and are empowered to make choices to improve their own lives
- Have access to safe and well-maintained green spaces and are actively involved in their upkeep
- Enjoy an environment which is looked after, safe and clean
- Can access healthy, sustainable and affordable homes for all stages of life
- Can travel safely on well-connected and affordable routes
- Feel part of a community which supports and looks after one another and is welcoming and inclusive
- Collectively celebrate the heritage and identity of the neighbourhood and plan carefully for its future
- Have a strong voice and can be at the heart of decision making locally.

UPSKILLING TRADE'S PEOPLE WILL SUPPORT THE CURRENT SKILL SHORTAGES THAT IS RESTRICTING THE DELIVERY OF NEW ENVIRONMENTALLY FRIENDLY WAYS OF CONSTRUCTION





COMMUNITY CLIMATE HEROES #1

Three local men came together to set up a new initiative in Lawrence Weston. They wanted to set up a project where they could use their trade skills, as well as creating a safe place to bring men together. The project originally started with no home to speak of. They started with monthly outreach sessions at a local older peoples' residential home, and were in talks with them to have a permanent container put on that site. However, as negotiations progressed, the home had a merger with another company which put the blockers on the Men in Shed project.

With that in mind and considering the growing popularity of the project, there was the option to move into the Lawrence Weston Youth Centre in a former self-contained lockable craft space which was unused at the time. Ambition Lawrence Weston supported this and removed the disused kiln (and stored it away safely) and renovated the room into a proper workshop. They have subsequently expanded by adding a steel shipping container directly outside for their stock (wood, etc.) with it fence around to create a secure outside workshop. Ambition Lawrence Weston supported this idea and applied for some kickstart funding, and in 2019 'Men in Sheds' was born.



Nobby, Mike and Jim had a lot of skills between them that they could share and upskill local residents who wanted to learn something new. They were also keen to support ideas that prevented items ending up in landfill unnecessarily. They run a repair café, where residents can bring either damaged or unwanted items along, have them repaired and take home, or donate to families in the local community for free. They have also been supporting Lawrence Weston in Bloom by making birdboxes and garden planters for the local community.

Men in Sheds are now exploring how they can be linked into the award winning **CHEESE project** (Cold Homes Energy Efficiency Survey Experts), as well as supporting other neighbourhood projects like Lawrence Weston in Bloom.

You can watch the Men in Sheds Climate Hero video here: www.youtube.com/watch?v=NHF4bmW71uk&t=2s

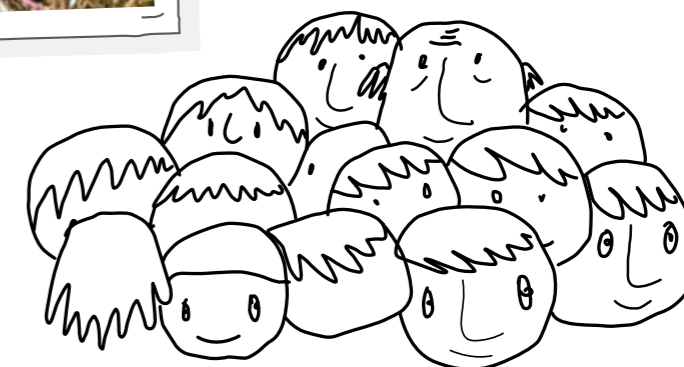


“ Fly dumping or tipping is the dumping of waste illegally instead of you using more authorised methods like curb side collection. Why is this a problem? It could harm the wildlife by trying to eat the dumped food, and secondly, it makes the place look trampy. ”

Freddie (aged 12), Volunteer litter picker



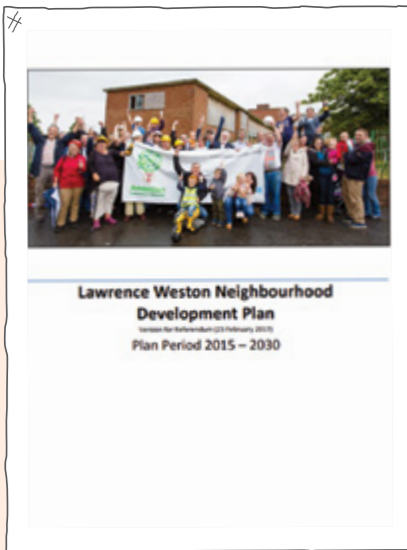
← NOT NICE!



Community portrait

'What's great/special/unique about our community' is the fact that Lawrence Weston has a **Neighbourhood Development Plan** (NDP). This legal document sets out objectives on key themes including housing, traffic and transport, parks and green spaces, jobs and skills, community facilities, retail, health and wellbeing and urban design. Planning applications within Lawrence Weston must be considered against our NDP as well as existing planning policy. It supports achieving land-use objectives in the **Lawrence Weston Community Plan**. The NDP means local people now have more say in how Lawrence Weston will develop.





What this means for our community

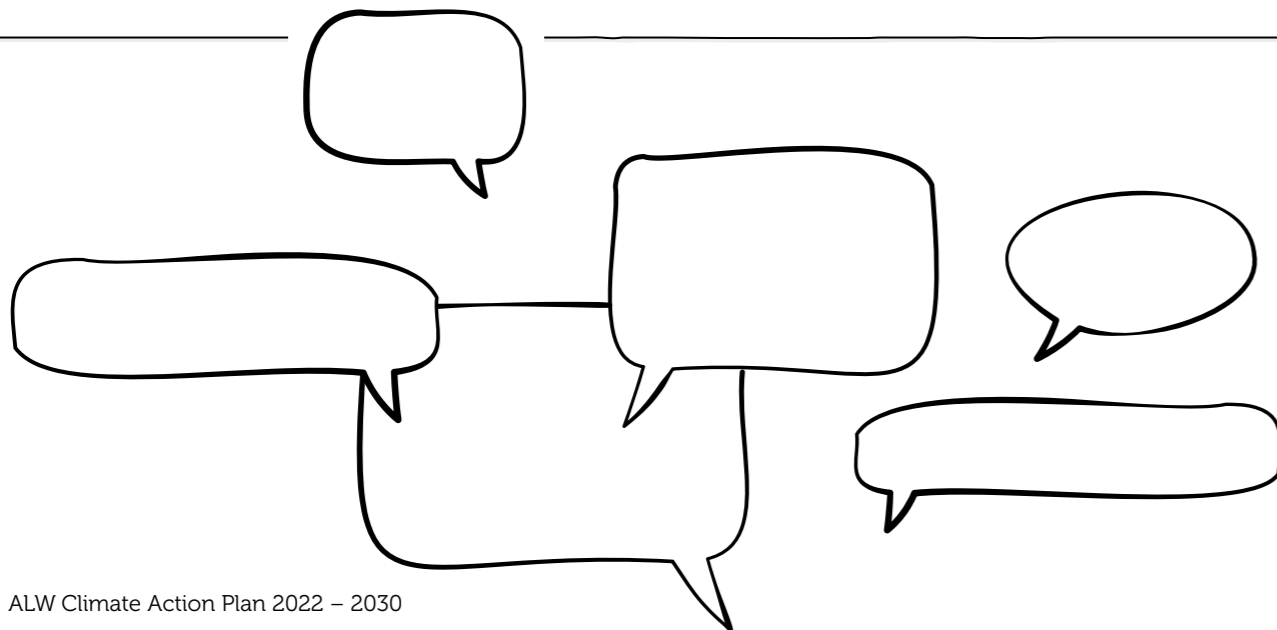
The NDP therefore enables the community plan and its aspirations to become a reality. It empowers local residents with a louder voice that all perspective developers, including the local authority, must listen to. This also enforces engagement and consultation with, and between, local residents and developers, whilst strengthening the resident's ability to change proposed developments to better meet the needs of the local area and its residents.

Now that the NDP received overwhelming support through a local referendum it is now recognised as a statutory document with legal standing. This then attracts a higher level of the local element of community infrastructure levy (CIL). This fund can then be used to further improve the local area and deliver both the Climate and Community plans.

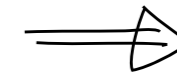


I really value being able to hear the views of Lawrence Weston residents on this extremely important subject. I know that there are particular challenges which face a community on the edge of the city; and I want the Council to have a better understanding of how we can make it possible for residents in every part of the city to live, and travel, in ways which promote better health and reduce carbon emissions.

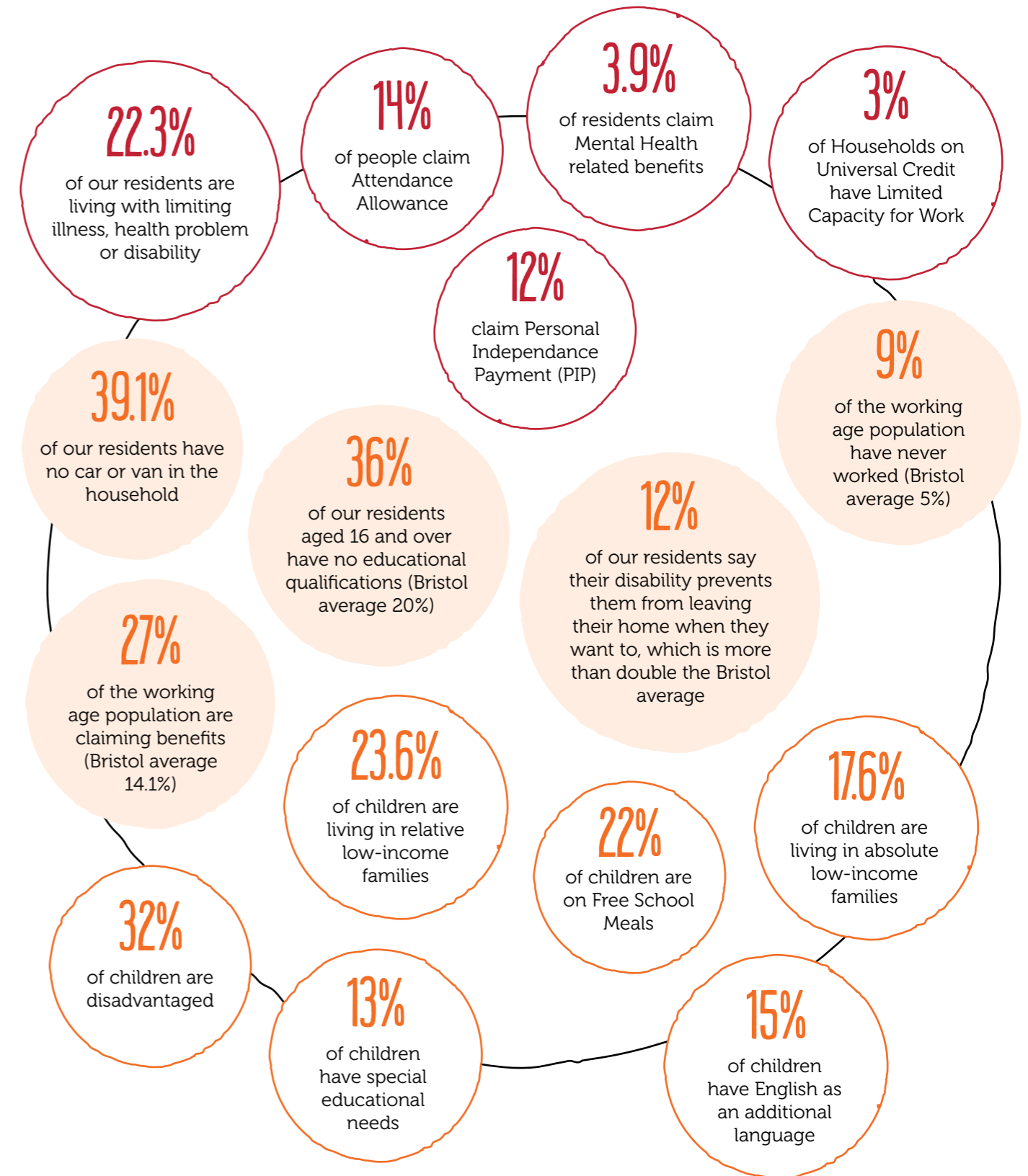
Don Alexander, Bristol City Council Labour and Co-op councillor for Avonmouth and Lawrence Weston ward and Cabinet Member for Transport.



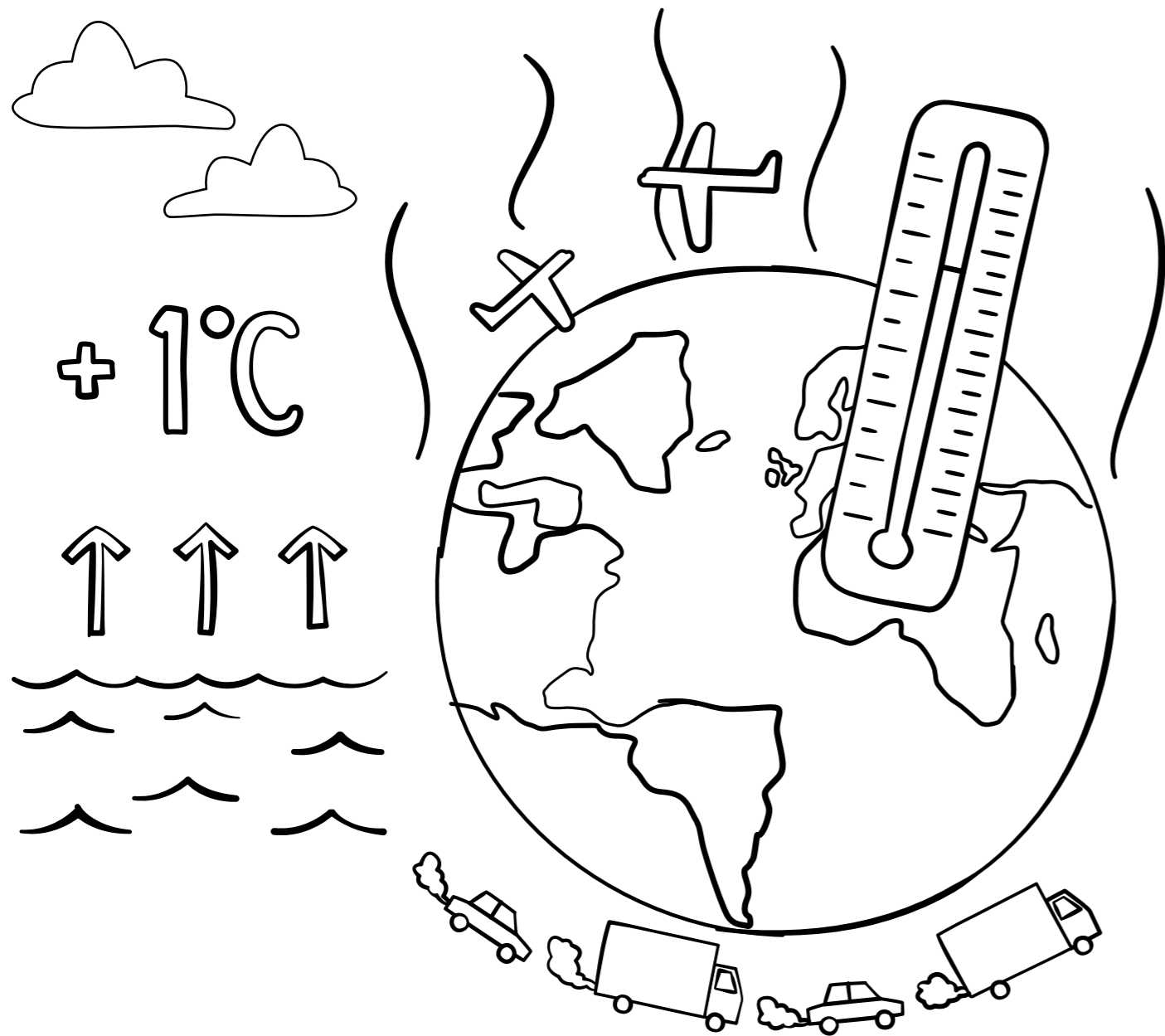
Our Community



All of the below are higher than the Bristol average



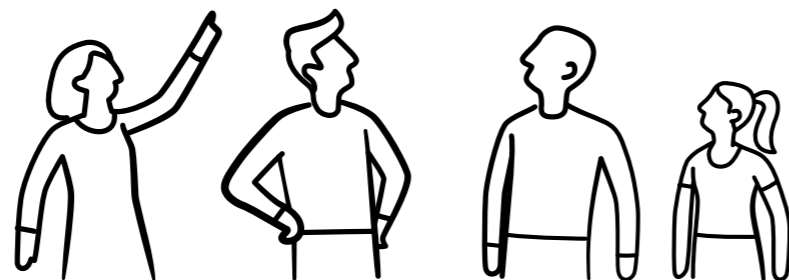
Health inequalities arise because of the conditions in which we are born, grow, live, work and age. These conditions influence our opportunities for good health, and how we think, feel and act, and this shapes our mental health, physical health and wellbeing. Residents living in Lawrence Weston are living in deprivation, have a lower-than-average life expectancy, do well less at school and leave with no or few qualifications, have less job prospects and opportunities and live in poorer health with life limiting illnesses.



Impacts of Climate Change

We are facing twin emergencies: a climate emergency and an ecological emergency. Human activities are estimated to have caused 1°C of global warming above pre-industrial levels. We are already seeing devastating impacts of 1°C warming; this is expected to get worse.

EMERGENCY



THE POTENTIAL IMPACTS OF CLIMATE CHANGE ON OUR RESIDENTS ARE SIGNIFICANT AND WIDE RANGING



The science on the climate emergency is clear: we need urgent action to reduce our carbon emissions to limit global temperature rise to below 1.5°C, and so prevent disastrous impacts. Recently science has shown the severity of our impact on the world's flora and fauna too. We also need to prepare for a changing climate, and adapt our societies, cultures and economies to be resilient to the impacts of climate change. Climate-related risks to the environment, health, livelihoods, homes, food security, raw materials, water supply and economic growth will rise, even if we manage to limit change to 1.5°C, and the impacts will be felt differently in different regions. Populations most at risk are marginalised, disadvantaged and vulnerable. In Bristol, some of our most deprived wards, including Avonmouth and Lawrence Weston ward, will be the most vulnerable to the physical impacts of climate change.

The potential impacts of climate change on our residents are significant and wide ranging.

In the **Bristol One City Climate Strategy** evidence was gathered on physical climate risk to the city. Bristol's coastline is projected to increase by up to +72cm, Winter rainfall is projected to increase by up to 48%, Summer maximum temperature is projected to increase by over +9°C, Summer rainfall is projected to decrease by up to 68%.

48%

increase in Winter rainfall and Summer maximum temperatures is projected to increase by

+9%





Climate change is a complex challenge. We recognise the interconnected and global nature of the world, which exposes Bristol to potentially catastrophic climate risks arising well beyond the city's boundary. We also acknowledge our local, national and global responsibility to take bold and immediate climate action as a city, and to share our successes and challenges openly and generously.

Bristol's One City Climate Strategy outlines the key changes across the city, and the UK, that will be needed to reach this goal.

Whilst Lawrence Weston's households have a lower than Bristol-average carbon footprint, the community climate action plan has been an opportunity to engage our community's residents in this important mission of tackling climate change, to explore how they can be in the driving seat of changes in our community, and how we can ensure we max out on the benefits that can come from these changes – warmer and more affordable-to-heat homes, quieter and safer streets and cleaner air.

Whilst we have got a lower-than-average carbon footprint,

this does not necessarily reflect an awareness of climate change and energy saving, but reflects the inequalities in the city with regarding fuel poverty and an ability to heat their homes.

Our natural environment is critical to our well-being and the climate resilience of our ward. Lawrence Weston has an abundance of local green spaces, as well as Kingsweston House and Blaise Castle estate on our doorstep. We also have two local nature reserves which have been part of the city-wide **'My Wild City'** project.

We have given consideration to the ambitions of the **Ecological Emergency Strategy** when developing the priorities of our Community Climate Action Plan. We have been doing a lot of work on environmental issues in Lawrence Weston, notably our triple award winning 'Lawrence Weston in Bloom' Project. There are two strands to this project. The first is around ensuring that our green spaces are safe and clean for our residents to be able to use, and the second is our focus on the biodiversity (the amount of variety between different plants, animals and other species in a given habitat at a particular time) within our local community.

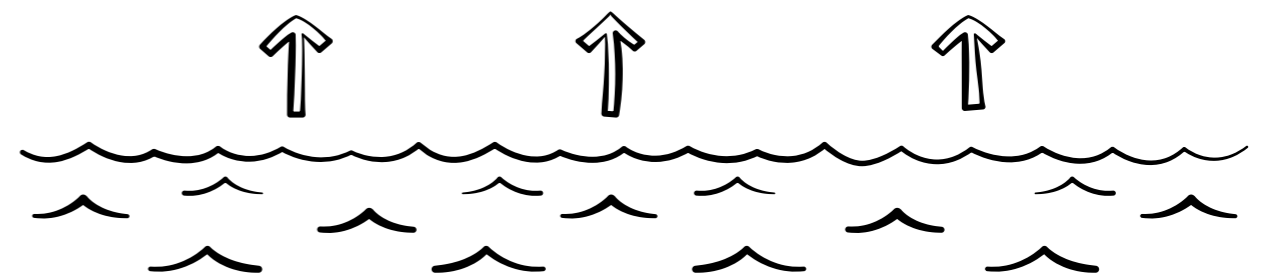


“ Thanks to the CHEESE projects energy audit of my home, they identified serious drafts entering my home following recent insulation works. This gave me the evidence to challenge the contractors who have now returned and rectified the work, and at long last I now have a much warmer comfortable home.

Jacki Crouch, Local Resident, vice chair of the Planning Group and Director of Ambition Lawrence Weston.



BRISTOL'S COASTLINE IS PROJECTED TO INCREASE BY UP TO +72CM



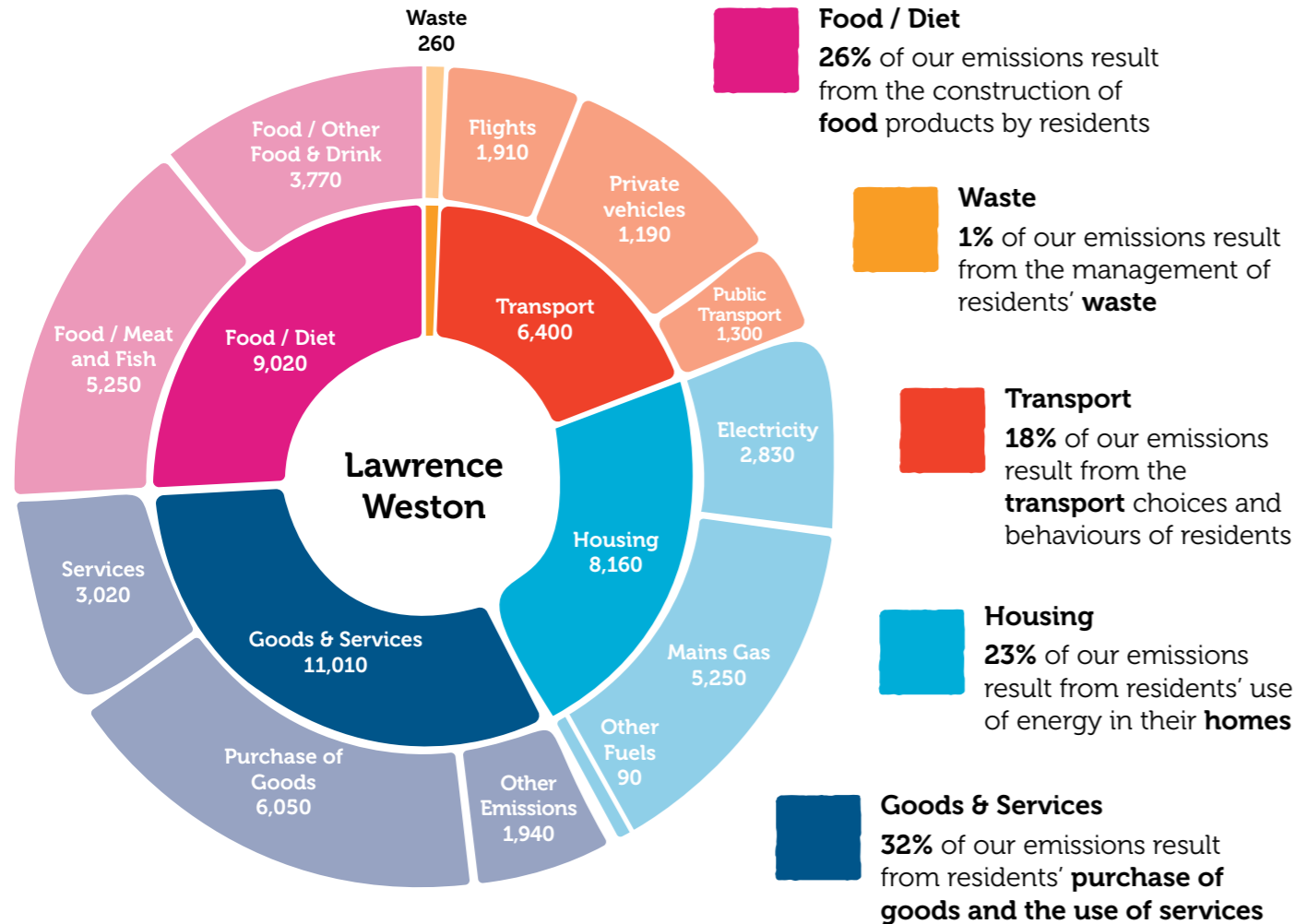
Our Baseline Community Carbon Footprint – what did it tell us?

Our carbon footprint report, produced by Bristol charity the Centre for Sustainable Energy, showed us the scale of our community's carbon emissions and the main 'consumption activities' responsible for these emissions (that's why it's called a 'consumption-based' carbon footprint). Having a picture of what our community carbon footprint is helps us understand the activities which result in carbon emissions, and from here we can begin to think about the breadth of activities needed to reduce emissions, where to focus our attention, and to explore which activities are possible at the community-level, and which require Bristol-wide, national, or even global commitment and action.



What did we learn?

Here is our community's total carbon footprint:



And this is the average carbon footprint per household, and in comparison, to the Bristol average:



Summary of carbon footprint

Lawrence Weston's carbon emissions follow the same pattern as Bristol, so no huge surprises for us. Our biggest carbon emissions come from Goods and services (17% are from buying goods, 9% from uses of services and 6% from consumption activities such as leisure and entertainment) which is the same as Bristol as a whole. Our lowest carbon emissions come from Transport (9% car use, 5% air travel and 4% public transport). Our overall carbon emissions per person is less than the Bristol average, but the repercussions on our residents is huge. The cost of food, petrol and energy rising, poor transport links, poor retail offer and rising sea levels impacts our community.

OUR LOWEST CARBON EMISSIONS COME FROM TRANSPORT (9% CAR USE, 5% AIR TRAVEL AND 4% PUBLIC TRANSPORT)



Why Community-led Climate Action?

Climate action requires collective action.

By working together, we can take powerful Community Climate Action which reduces carbon and improves lives.

The climate action we take as individuals and households is critically important. And the actions of businesses and organisations too. But we can't solve the climate crisis without community. In Lawrence Weston it's people working together that makes real change happen. With community we can achieve great things.

During the COVID pandemic, Community organisations in Bristol such as Ambition Lawrence Weston demonstrated significant leadership. Resident led community organisations are the experts of their place and the lived experience of their community, and so are well equipped to develop pragmatic and targeted solutions which work for their specific communities.

THE CLIMATE ACTION WE TAKE AS INDIVIDUALS AND HOUSEHOLDS IS CRITICALLY IMPORTANT. AND THE ACTIONS OF BUSINESSES AND ORGANISATIONS TOO



Impacts of COVID Pandemic

AN IMPORTANT STARTING POINT FOR DEVELOPING THIS PLAN HAS BEEN TAKING TIME TO LISTEN AND REALLY UNDERSTAND WHERE LOCAL PEOPLE 'ARE AT' IN THEIR LIVES FOLLOWING THE PANDEMIC

The development of this plan happened during the COVID 19 pandemic, including: lockdowns, school closures, societal distancing measures and furloughing of staff. COVID compounded many of the existing inequalities experienced by many in our community. An important starting point for developing this plan has been taking time to listen and really understand where local people 'are at' in their lives following the pandemic. The Climate won't necessarily be a priority for many as they emerge from the impacts of COVID, not because they don't care, but because they have so many other immediate pressures in their lives – cuts to Universal Credit and the fear of having to choose between keeping warm and feeding themselves due to the rise in fuel bills.

This is where our plan's focus on co-benefits for local people alongside carbon savings impact is essential. As our community recovers from the pandemic, our ambitions to a net carbon Bristol must also have improved the quality of life for our residents with social justice at its heart.

How we developed this plan

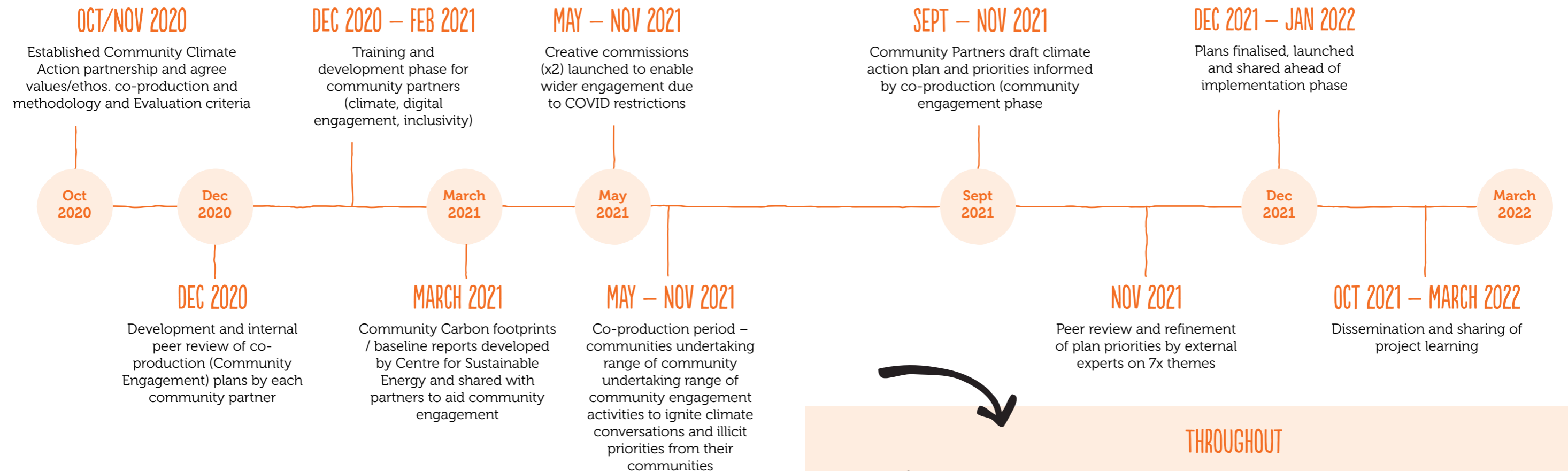
This plan was developed as part of the Bristol Community Climate Action Project. The Project Group (6 x community partners, Bristol Green Capital Partnership, Bristol City Council and Centre for Sustainable Energy) met regularly (on average twice a month) throughout the development phase. The flowchart below captures the main elements of the methodology to create Bristol's first Community Climate Action Plans,

We developed an **online survey** consisting of different sets of questions to gather residents' initial thoughts on a wide range of topics. We simultaneously hosted a wide range of workshops and activities. These workshops were for anyone living in Lawrence Weston, of any age, and we covered a range of topics including litter picking, cooking, winter salad window box making, creative solutions to cleaning your home, learning to cycle, nature drawing workshops, community gardening and growing.

All of this data was brought together and grouped into initial 'Themes'. We then held a Community Event in October 2021 to finalise all of the residents' priorities. Darren Jones MP opened our event with his keynote speech. We took all of the information that had been collected through the online survey, activities and the various workshops that we had delivered across the summer, to prioritise what matters to them and developed our final action plan. At the workshop the residents spent the afternoon going through each theme and adding in any tweaks as well as looking for other opportunities, fine tuning the priorities as well as finalising each of the project ideas and proposals.



WE DEVELOPED AN ONLINE SURVEY CONSISTING OF DIFFERENT SETS OF QUESTIONS TO GATHER RESIDENTS' INITIAL THOUGHTS ON A WIDE RANGE OF TOPICS



COMMUNITY CLIMATE HEROES #2

Roger Sabido's journey into community energy – written by Roger

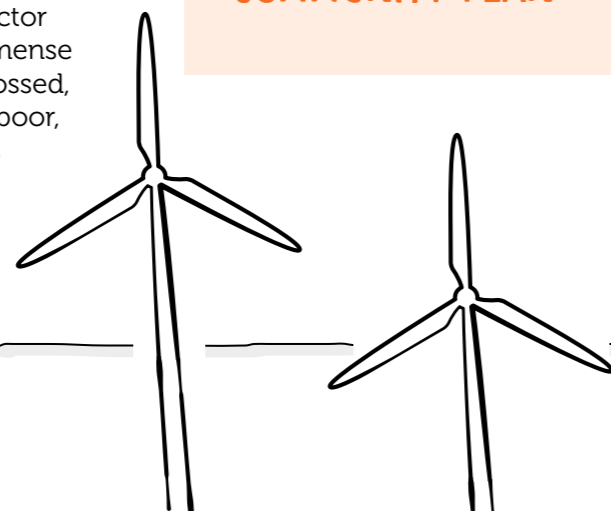
'In 2012 I attended a talk which was part of the Bristol Festival of Ideas at the Create Centre, on the importance and even necessity of communities owning and building their own energy infrastructures, including wind. I had just begun to be involved with Ambition Lawrence Weston (ALW) and the talks were riveting eye-openers. ALW were in the throes of creating their first Community Plan, and I submitted the idea of owning our own wind turbine and community energy group.

Time rolled on, making it clearer to us how important energy costs were to communities like ours, and how some communities were responding by building or taking a share in local wind and solar generation. BEN (Bristol Energy Network) ran a fuel poverty workshop in 2014 introducing us to other BEN members which inspired me to get an energy group going in Lawrence Weston & invited David Tudgey to become ALW's community energy consultant and co-create and help deliver energy projects funded by The Big Local Trust and the Bristol Green Capital in 2015. One of the projects he supported as part of the energy group with other BEN members was The Cold Homes Energy Efficiency Survey Experts <https://cheeseproject.co.uk>. ALW were the original pilot recruiting local residents and champions to take part. We also ran community days to get DIY solar to inspire residents too which was fantastic and then this led to working with Bristol Energy Co-operative's drive to build a solar farm on Lawrence Weston Road.

The case for community energy, even our own, now had real credibility. The aspiration of building a community owned wind turbine became a firm part of the renewed Lawrence Weston Community Plan. I am also a founding member and Director of Ambition Community Energy CiC. An immense amount of work yet to come. But, fingers crossed, a tremendous achievement for a small, and poor, community; and our thanks to the generous support and backing from many individuals.'

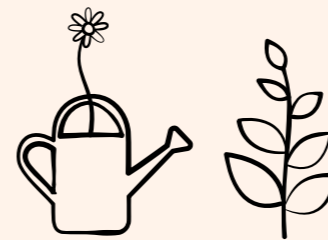


THE ASPIRATION OF BUILDING A COMMUNITY OWNED WIND TURBINE BECAME A FIRM PART OF THE RENEWED LAWRENCE WESTON COMMUNITY PLAN

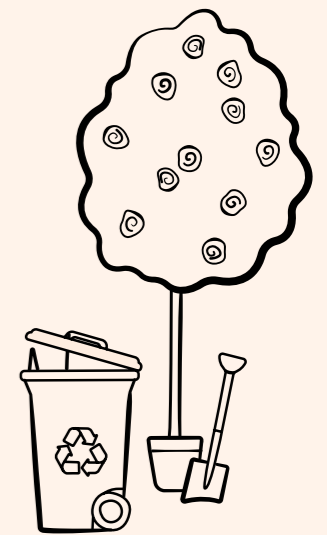




**AMBITION LAWRENCE
WESTON COMMUNITY
CLIMATE ACTION PLAN
PRIORITIES AND ACTIONS**



The following priorities and actions were developed with the local community through our community engagement process and refined with support from by Bristol Green Capital Partnership and various Community Climate Action partners from across the city.



Scoring of priorities

We have scored several of our priorities through several criteria using a simple 1-5 scoring system:

Criteria scored	Scoring definition:
1	Very Low
2	Low
3	Moderate
4	High
5	Very high /significant
Timescale	
1 – 2 years	(quick win)
3 – 5 years	(medium term larger scale)
6 – 8 years	(significant or complex)

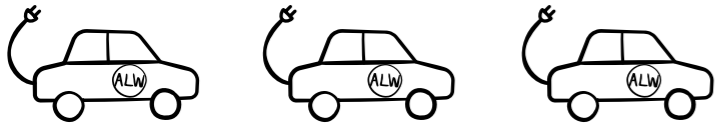
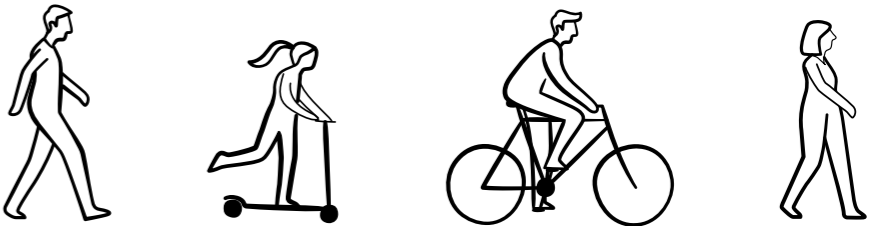
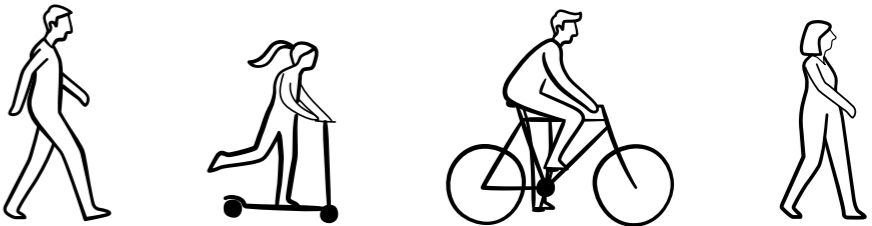
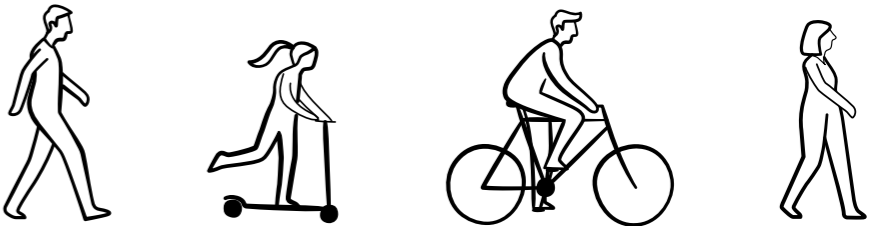


Ambition Lawrence Weston will be working closely with the other partners to ensure that we maximise the outcome for citywide changes that are reflected in this plan. For example, improving public transport needs to happen across the city and not just in our community. We are also working closely with Bristol Disability and Equality Forum to ensure that all of our outcomes are accessible for all.



Priority 1: Transport

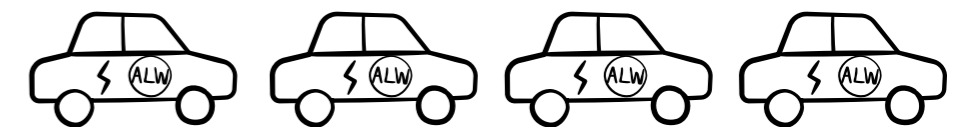
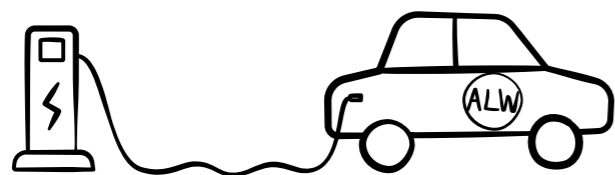
Timescale
 1-2 years (quick win)
 3-5 years
 (medium term larger scale)
 6-8 years
 (significant or complex)

Priority action (with associated carbon impact)	Collaborations, Stakeholders, Supporters, Partners, Experts	Resource (cost) (scoring 1-5)	Impact: Carbon (scoring 1-5)	Impact: people /community co-benefits (scoring 1-5)	Resource (people) effort / capacity (scoring 1-5)	Timescale
1.1 Develop a community owned electric car club scheme 	<ul style="list-style-type: none"> Private Car Company Enterprise Bristol City Council Western Power Distribution WECA Bristol Energy Network Ambition Lawrence Weston South West Energy Hub City Leap Housing developers 	3 <ul style="list-style-type: none"> Electric car charging points Rapid charging points Electric cars Business plan Legal costs 	3 <ul style="list-style-type: none"> Reduction in petrol and diesel cars on road (Car club cars produce 72% lower emissions (PM2.5) than the average car*. The positive impact is amplified by the fact that 18.5 private cars* are replaced by each car club vehicle) 	3 <ul style="list-style-type: none"> Better air quality No need to purchase/run own car Access to a vehicle Reduced noise pollution 	2 <ul style="list-style-type: none"> Maintenance Operations and management contract to manage all vehicles and charge points Membership manager Bespoke software working with Malvern Hills to manage bookings and payments Governance structure 	<ul style="list-style-type: none"> Short to medium term
1.2 Improved integrated transport systems - Citywide 	<ul style="list-style-type: none"> Ambition Lawrence Weston Bristol City Council WECA First Bus Stagecoach Great Western Railway Uber South West Energy Hub Stagecoach TravelWest SevernNet City Leap Transport Planning 	3 <ul style="list-style-type: none"> Staff time to look at user cases based on travel patterns 	4 <ul style="list-style-type: none"> Reduction in petrol and diesel cars on road 	4 <ul style="list-style-type: none"> Better air quality No need to purchase/run own car 	3 <ul style="list-style-type: none"> Lobbying 	<ul style="list-style-type: none"> Short to medium term
1.3 Improved walking and cycling routes and creating safer spaces on roads for active transport 	<ul style="list-style-type: none"> Ambition Lawrence Weston Bristol City Council Sustrans SevernNet Life Cycle Bristol Waste Bristol Walking Alliance BDEF 	2 <ul style="list-style-type: none"> Capital costs 	4 <ul style="list-style-type: none"> Reduction in petrol and diesel cars on road 	4 <ul style="list-style-type: none"> Improved Physical health Reduced noise pollution Improve air quality Improved green spaces 	2 <ul style="list-style-type: none"> Staff time Project co-ordinator 	<ul style="list-style-type: none"> Short to medium term
1.4 Create a mobility hub in Lawrence Weston to include E-Scooter/Bike scheme and community owned electric bikes as well as connecting to bus routes 	<ul style="list-style-type: none"> Ambition Lawrence Weston Private Companies Bristol City Council WECA City Leap BDEF 	3 <ul style="list-style-type: none"> Capital costs Electric bikes Community charging points 	4 <ul style="list-style-type: none"> Reduction in petrol and diesel cars on road 	4 <ul style="list-style-type: none"> Improved Physical health Better air quality Reduced noise/pollution 	2 <ul style="list-style-type: none"> Management of scheme 	<ul style="list-style-type: none"> Short to medium term

Priority 2: Housing/Buildings

Timescale
 1-2 years (quick win)
 3-5 years
 (medium term larger scale)
 6-8 years
 (significant or complex)

Priority action (with associated carbon impact)	Collaborations, Stakeholders, Supporters, Partners, Experts	Resource (cost) (scoring 1-5)	Impact: Carbon (scoring 1-5)	Impact: people /community co-benefits (scoring 1-5)	Resource (people) effort / capacity (scoring 1-5)	Timescale
2.1 Develop housing improvement projects (warm up, skill up)	<ul style="list-style-type: none"> CHEESE Men in Sheds Colleges Government schemes Bristol Energy Network Ambition Lawrence Weston City Leap Energy Rev Centre for Sustainable Energy 	4 <ul style="list-style-type: none"> Training and Accreditation Materials CHEESE surveys 	4 <ul style="list-style-type: none"> Reduced energy demand Affordable heating and energy use from renewable sources Improving all homes to EPC standard C 	3 <ul style="list-style-type: none"> Improved overall health and wellbeing Improved employment opportunities Financial savings 	3 <ul style="list-style-type: none"> Paid internships Volunteers 	<ul style="list-style-type: none"> Short to medium term
2.2 All community buildings to become carbon neutral	<ul style="list-style-type: none"> Bristol City Council Bristol Energy Network (Sonnet) Community building owners and tenants City Leap Energy Rev Centre for Sustainable Energy 	3 <ul style="list-style-type: none"> Capital costs New Cycle Racks New lighting 	3 <ul style="list-style-type: none"> Reduced energy demand Affordable heating and energy use from renewable sources 	3 <ul style="list-style-type: none"> Improved community facilities 	3 <ul style="list-style-type: none"> Project management 	<ul style="list-style-type: none"> Short to medium term
2.3 Create dialogue between BCC and other social housing providers how they will implement renewable energy generation that benefits the tenant including microgrids	<ul style="list-style-type: none"> Bristol Energy Network Bristol University Bristol City Council Social landlords City Leap Ambition Community Energy CiC 	2 <ul style="list-style-type: none"> Co-ordination costs Project costs Installation costs 	4 <ul style="list-style-type: none"> Displacement of fossil fuel energy by using locally generated electricity from renewable sources 	4 <ul style="list-style-type: none"> More social homes being ran on renewable energy Reduced fuel poverty 	3 <ul style="list-style-type: none"> Financial benefit Better air quality Warmer homes 	<ul style="list-style-type: none"> Medium term
2.4 Car charging points	<ul style="list-style-type: none"> Ambition Lawrence Weston WECA Western Power Bristol City Council Social housing providers 	4 <ul style="list-style-type: none"> Capital costs 	3 <ul style="list-style-type: none"> Opportunity for everyone to own an electric car therefore reduce carbon missions 	3 <ul style="list-style-type: none"> Cleaner air 	<ul style="list-style-type: none"> Medium term 	



Priority 3: Energy

Priority action
(with associated carbon impact)

Collaborations, Stakeholders, Supporters, Partners, Experts

Resource (cost)
(scoring 1–5)

Impact: Carbon
(scoring 1–5)

Impact: people /community co-benefits
(scoring 1–5)

Resource (people) effort / capacity
(scoring 1–5)

Timescale
1–2 years (quick win)
3–5 years
(medium term larger scale)
6–8 years
(significant or complex)

3.1 **Develop an Energy membership club as phase one in the development of an Energy wallet scheme and one stop shop approach**

- Bristol Credit Union
- Energy companies
- Bristol University
- Bristol Energy Network
- Bristol City Council
- WECA
- Ambition Lawrence Weston
- City Leap
- Ambition Community Energy CiC
- Energy Rev
- Centre for Sustainable Energy

- 2**
- Development and design of the software
 - Legal fees of which about 60% (i.e., about 180 households) would likely sign up for the energy wallet account

- 2**
- MEES www.gov.uk/guidance/domestic-private-rented-property-minimum-energy-efficiency-standard-landlord-guidance

- 3**
- Access to funding and grants
 - Improved mental health
 - Reduced fuel poverty

- 3**
- Staff time to apply for funding
 - Staff time to manage the project
 - 10 Energy Wallet Champions trained within the phase 1 of the project

• Quick win

3.2 **Identify suitable sites for renewable infrastructure, including solar PV, wind turbines, micro grids, Battery technology and EV charge points to create a smart local (with community ownership models) energy system**

- Ambition Community Energy CiC
- Western Power Distribution
- Bristol City Council
- Land owners
- Bristol energy Co-operative
- Waterlilies – Bright Green Futures
- Bristol Energy Network
- City Leap
- Energy Rev
- Centre for Sustainable Energy

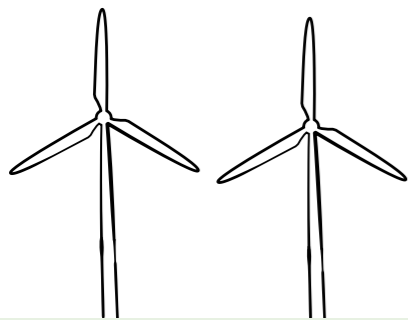
- 2**
- Legal fees
 - Project management for ace CiC
 - Environmental assessments
 - Energy assessments
 - Planning
 - Governance and ownership structures
 - Investment, finance and revenue modelling
 - Engagement

- 3**
- Potential new infrastructure
 - More renewable energy sources

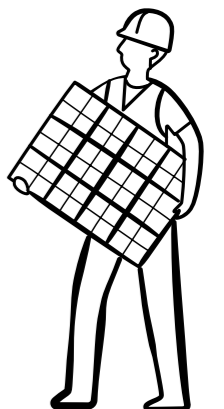
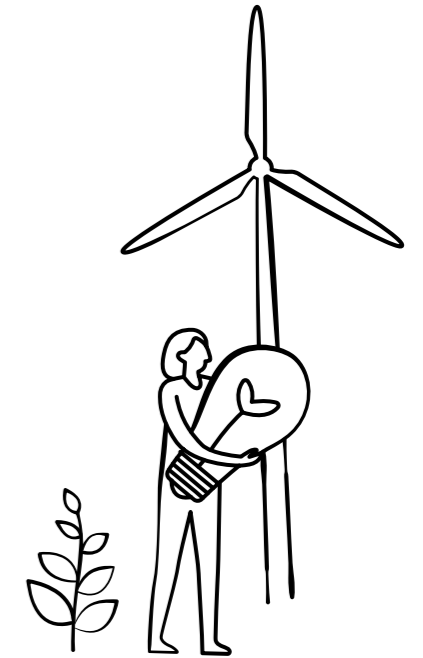
- 4**
- Lower energy bills for residents and businesses
 - Improved air quality
 - Improved access to education
 - Improved resilience to fluctuating energy prices

- 3**
- Project manager co-ordination

• Medium term



IDENTIFY SUITABLE SITES FOR RENEWABLE INFRASTRUCTURE, INCLUDING SOLAR PV, WIND TURBINES, MICRO GRIDS, BATTERY TECHNOLOGY AND EV CHARGE POINTS



Priority 4: Food

Priority action (with associated carbon impact)	Collaborations, Stakeholders, Supporters, Partners, Experts	Resource (cost) (scoring 1–5)	Impact: Carbon (scoring 1–5)	Impact: people /community co-benefits (scoring 1–5)	Resource (people) effort / capacity (scoring 1–5)	Timescale 1-2 years (quick win) 3-5 years (medium term larger scale) 6-8 years (significant or complex)
4.1 Support more local growing projects	<ul style="list-style-type: none"> • Ambition Lawrence Weston • Allotment Association • Lawrence Weston in Bloom • Gardening Groups • Local schools including childcare providers • Incredible Edibles • Avon Wildlife Trust • Blaise Nursery • Friends of the Earth • Bristol Food Network • BDEF • Heart of BS13 	3 <ul style="list-style-type: none"> • Upfront costs • Materials • Capital costs 	3 <ul style="list-style-type: none"> • More biodiversity • Less demand on shop bought edibles • Less packaging and waste 	4 <ul style="list-style-type: none"> • Better access to healthier food • More cost effective • Reduce social isolation • Improved green spaces 	3 <ul style="list-style-type: none"> • Management of projects • Staff time 	<ul style="list-style-type: none"> • Quick win
4.2 Community cooking class	<ul style="list-style-type: none"> • Ambition Lawrence Weston • Food Club • North West Food Bank • Allotment Association • Incredible Edibles • Lawrence Weston in Bloom • Gardening Groups • Bristol Food Network • Local schools • Avon Wildlife Trust • Resource Futures 	2 <ul style="list-style-type: none"> • Venues • Ingredients • Recipe books 	3 <ul style="list-style-type: none"> • Reduction in food waste • Reduction in plastic packaging • Reduction in meat 	3 <ul style="list-style-type: none"> • Healthier Diet 	2 <ul style="list-style-type: none"> • Facilitators 	<ul style="list-style-type: none"> • Short to medium term
4.3 Set up a community fridge	<ul style="list-style-type: none"> • Co-op • Ambition Lawrence Weston • Foodbank • Lidl • Neighbourly 	1 <ul style="list-style-type: none"> • Fridge • Running costs • Commitment from local stores 	3 <ul style="list-style-type: none"> • Reduction in food waste 	3 <ul style="list-style-type: none"> • Food distributed and not going to landfill • Financial benefit for residents 	2 <ul style="list-style-type: none"> • Volunteers or staff time 	<ul style="list-style-type: none"> • Short to medium term
4.4 Commercial food waste collection	<ul style="list-style-type: none"> • Bristol Waste • GENeco • Ambition Lawrence Weston • Resource Futures 	1 <ul style="list-style-type: none"> • Bins • Collection of bins 	2 <ul style="list-style-type: none"> • More food waste going to GENeco for biomass production 	2 <ul style="list-style-type: none"> • Reduced fuel poverty 	2 <ul style="list-style-type: none"> • Staff 	<ul style="list-style-type: none"> • Short to medium term

Priority 5: Waste and Consumption

Priority action (with associated carbon impact)	Collaborations, Stakeholders, Supporters, Partners, Experts	Resource (cost) (scoring 1–5)	Impact: Carbon (scoring 1–5)	Impact: people /community co-benefits (scoring 1–5)	Resource (people) effort / capacity (scoring 1–5)	Timescale 1-2 years (quick win) 3-5 years (medium term larger scale) 6-8 years (significant or complex)
5.1 <ul style="list-style-type: none"> Recycling (free) collection for bulky items A managed excess building materials reuse scheme 	<ul style="list-style-type: none"> Bristol Waste Bristol City Council Social enterprise Ambition Lawrence Weston Resource Futures 	1 <ul style="list-style-type: none"> Community generated subsidies and funds 	2 <ul style="list-style-type: none"> Older appliances contain Freon gas which depletes the ozone layer 	3 <ul style="list-style-type: none"> Dispose properly of potential hazardous materials which could be poisonous to humans, plants and wildlife and contaminate soil 	2 <ul style="list-style-type: none"> Extra staff needed 	<ul style="list-style-type: none"> Quick win
5.2 <ul style="list-style-type: none"> Support existing, and set up new projects that reduce waste and consumption 	<ul style="list-style-type: none"> Ambition Lawrence Weston Men in Sheds SevernNet Lawrence Weston in Bloom Community shop Blaise Nursery Resource Futures BDEF 	2 <ul style="list-style-type: none"> Set up costs Running costs 	2 <ul style="list-style-type: none"> Reduce items going to Landfill 	3 <ul style="list-style-type: none"> Financial benefits Reduce social isolation Improved mental health 	2 <ul style="list-style-type: none"> Staff time Project management 	<ul style="list-style-type: none"> Short to medium term
5.3 <ul style="list-style-type: none"> Reduce single use plastic 	<ul style="list-style-type: none"> Ambition Lawrence Weston Local traders Supermarkets Resource Futures 	2 <ul style="list-style-type: none"> Campaigning Provision of alternatives to single use plastics 	3 <ul style="list-style-type: none"> Reduction of microplastics in the environment 	3 <ul style="list-style-type: none"> Improved mental health Cleaner neighbourhood Pride of place Improved green spaces 	1 <ul style="list-style-type: none"> Lobbying 	<ul style="list-style-type: none"> Short to medium term
5.4 <ul style="list-style-type: none"> Identify potential biogas (as well as hydrogen from electrolysis – powered by renewable energy) vehicles for commercial distribution vehicles 	<ul style="list-style-type: none"> GENeco Resource Futures Bristol Waste 	2 <ul style="list-style-type: none"> Capital costs 	3 <ul style="list-style-type: none"> Less commercial waste going to landfill Less diesel vehicles on the road 	3 <ul style="list-style-type: none"> Better air quality Reduced noise pollution 	1 <ul style="list-style-type: none"> Staff time 	<ul style="list-style-type: none"> Quick win



Priority 6: Nature

Priority action (with associated carbon impact)	Collaborations, Stakeholders, Supporters, Partners, Experts	Resource (cost) (scoring 1–5)	Impact: Carbon (scoring 1–5)	Impact: people /community co-benefits (scoring 1–5)	Resource (people) effort / capacity (scoring 1–5)	Timescale 1-2 years (quick win) 3-5 years (medium term larger scale) 6-8 years (significant or complex)
6.1 Gardening project helping elderly and disabled residents maintain their gardens	<ul style="list-style-type: none"> • Ambition Lawrence Weston • Lawrence Weston in Bloom • Gardening Project • Men in Sheds • Local volunteers • Social enterprise • Blaise Nursery • Friends of the Earth • Resource Futures • BDEF 	2 <ul style="list-style-type: none"> • Set up costs • Materials • Tools • Disposal licence? 	3 <ul style="list-style-type: none"> • More biodiversity within the community • Better habitat for local wildlife • More trees planted 	3 <ul style="list-style-type: none"> • More appealing neighbourhood • Financial benefit of not buying tools unnecessarily • Improved mental health • Improved safety • Improved green spaces 	2 <ul style="list-style-type: none"> • Project management • Staff costs 	<ul style="list-style-type: none"> • Quick win
6.2 Create habitual spaces for wildlife within new buildings and infrastructure and housing developments to include sustainable urban drainage ie creating soak aways and ponds where appropriate	<ul style="list-style-type: none"> • Avon Wildlife Trust • Ambition Lawrence Weston • Men in Sheds • Lawrence Weston in Bloom • Bristol City Council • South Gloucestershire Council • Bristol Natural History Consortium • One City Environment Board • Friends of the Earth 	3 <ul style="list-style-type: none"> • Capital costs 	3 <ul style="list-style-type: none"> • Protecting the biodiversity • Sustaining wildlife populations • Creating wildlife corridors • Improve air quality 	4 <ul style="list-style-type: none"> • Improved mental health • Creating nature walkways • Improved physical health • Improved air quality • Improved mental health • Improved green spaces 	3 <ul style="list-style-type: none"> • Staff time • Project co-ordination 	<ul style="list-style-type: none"> • Medium term
6.3 Reduce the use of pesticides Protect our ecosystems by reducing the use of harmful pesticides Find an alternative to harmful pesticides	<ul style="list-style-type: none"> • Ambition Lawrence Weston • Avon Wildlife Trust • Lawrence Weston in Bloom • Soil Association • One City Environment Board 	1 <ul style="list-style-type: none"> • Campaign costs 	3 <ul style="list-style-type: none"> • Sustaining and protecting local wildlife 	3 <ul style="list-style-type: none"> • Pesticides not being consumed on food 	1 <ul style="list-style-type: none"> • Staff costs 	<ul style="list-style-type: none"> • Quick win
6.4 Helping young people engage with nature <small>* link to jobs/economy theme</small>	<ul style="list-style-type: none"> • Ambition Lawrence Weston • Local schools and childcare providers • Youth clubs 	1 <ul style="list-style-type: none"> • Campaign costs 	2 <ul style="list-style-type: none"> • Improved greenspaces 	2 <ul style="list-style-type: none"> • Improved mental health • Improved green spaces 	2 <ul style="list-style-type: none"> • Staff costs • Project management 	<ul style="list-style-type: none"> • Quick win

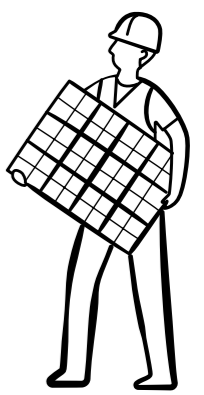
Priority 7: Economy/Business/Jobs/Education

Priority action (with associated carbon impact)	Collaborations, Stakeholders, Supporters, Partners, Experts	Resource (cost) (scoring 1–5)	Impact: Carbon (scoring 1–5)	Impact: people /community co-benefits (scoring 1–5)	Resource (people) effort / capacity (scoring 1–5)	Timescale 1-2 years (quick win) 3-5 years (medium term larger scale) 6-8 years (significant or complex)
7.1 Develop an Energy Learning Zone	<ul style="list-style-type: none"> Ambition Lawrence Weston Ambition Energy CiC Colleges/FE providers WECA Bristol University University of the West of England Bristol Energy Network Bristol City Council Energy Rev 	4	3	4	3	<ul style="list-style-type: none"> Short to medium
7.2 Renewable Energy and Modern Method in Construction* (MMC) skills academy	<ul style="list-style-type: none"> Ambition Lawrence Weston Ambition Energy CiC Colleges/FE WECA Construction industry Energy Rev Business West Business in the Community Bristol Housing Festival 	3	3	4	3	<ul style="list-style-type: none"> Medium term
7.3 Regeneration and green recovery to support the local economy Support for local high street to become Net Zero	<ul style="list-style-type: none"> Traders Ambition Lawrence Weston Bristol Energy Network Energy Rev Business West Business in the Community Resource Futures 	3	2	2	1	<ul style="list-style-type: none"> Quick win

* Modern Methods of Construction provide the opportunity to be more sustainable as homes are precision-engineered and manufactured in a factory-controlled environment. Houses are built using sustainable materials. This type of construction also helps reduce waste.



EQUIPPING STUDENTS WITH THE SKILLS THAT EMPLOYERS ARE LOOKING FOR TO CREATE A GREENER FUTURE WITH MORE GREEN SKILLS AND TRAINING



Priority 7: Economy/Business/Jobs/Education

Priority action
(with associated carbon impact)

Collaborations, Stakeholders, Supporters, Partners, Experts

Resource (cost)
(scoring 1-5)

Impact: Carbon
(scoring 1-5)

Impact: people /community co-benefits
(scoring 1-5)

Resource (people) effort / capacity
(scoring 1-5)

Timescale
1-2 years (quick win)
3-5 years
(medium term larger scale)
6-8 years
(significant or complex)

7.4

- Ensure upskilling for local trades in modern high quality building techniques and have contracts lined up to use on leaving the training
- Quality assurance check on new build policy

- Planning departments
- Energy Rev
- Bristol Energy Network
- City of Bristol College
- Ambition Lawrence Weston
- Ambition Community Energy CiC
- Business West
- Bristol Housing Festival
- CSE future proof project

- 1
- Use of other organisations budget

- 3
- Equipping students with the skills that employers are looking for to create a greener future with more green skills and training

- 3
- Improved high skilled work force
 - More economic power
 - Increased employment sustainability

- 1
- Use of other organisations staff and skills

• Medium term

7.5

With support of the LWNPG, help residents set up a local estate management group. This group will be empowered to raise and progress issues the BCC departments

- Ambition Lawrence Weston
- Lawrence Weston Planning Group
- Bristol City Council

- 2
- Training
 - Resources
 - Management

- 3
- More appealing neighbourhood
 - Better facilities and homes

- 1
- Residents

• Quick Win



**MORE APPEALING NEIGHBOURHOOD
BETTER FACILITIES AND HOMES**

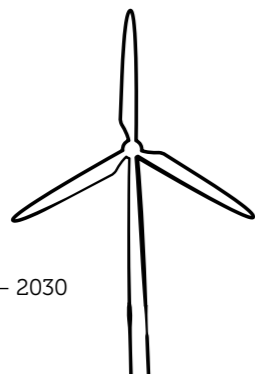


How our plan makes strategic connections

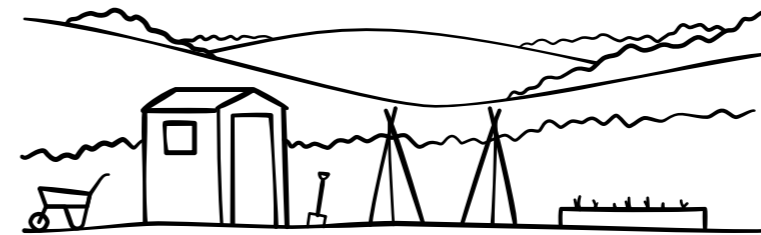


The themes and projects identified within our Climate Action Plan demonstrates our commitment to Bristol realising a NetZero target by 2030 ahead of the UKs national target for NetZero by 2050. Indeed already our contribution in developing our **onshore wind turbine will produce the equivalent renewable electricity for the number of households in Lawrence Weston.** But our climate action plan is going beyond carbon savings and is focused on improving the lives and well-being of our residents to ensure they have good quality warm homes that they can afford to heat, as well have access to an integrated transport system that allows them to access the city and wider region. We have a vision for our **young people to access the jobs that will be created from the transition from a fossil fuel economy to a NetZero carbon economy** which is why our focus on improving skills is set out alongside the development of our onshore wind project. We are privileged to benefit from wildlife from the surrounding area of the Severn Estuary and the woodlands of the Blaise Castle, and connections with local food and farming through our Lawrence Weston Community Farm and allotments which this plan will enhance our residents awareness and participation in improving our local green spaces surrounding our homes.

WE CAN AND MUST IMPROVE ALL RESIDENTS' LIVELIHOODS WHILST TACKLING THE CLIMATE EMERGENCY AS THEY HAVE THE LEAST RESOURCES TO ADAPT TO THE CHANGING ECONOMY AND PARTICIPATE ACTIVELY IN AN ENERGY TRANSITION



This plan must be supported in order for it to succeed and for the city to succeed in its own One City Plan. Over the last 12-18 month with COVID-19 we have already seen an end to the generation upon generation economic progress and the incomes of our residents in real terms reduce spending power and increase dependence on foodbanks. We can and must improve all residents' livelihoods whilst tackling the climate emergency as they have the least resources to adapt to the changing economy and participate actively in an energy transition. Our plan reflects the wider strategies and plans of the One City Climate Strategy, COVID recovery, Citizen Assembly, Ecological Emergency Strategy recommendations. Therefore our plan creates the opportunity for other city partners to participate and support Ambition Lawrence Weston to deliver its Climate Action Plan and in doing so also supports a recovery of not just of our community but also the whole city with a **Community Led Smart Local Energy System.**



WE ARE PRIVILEGED TO BENEFIT FROM WILDLIFE FROM THE SURROUNDING AREA OF THE SEVERN ESTUARY AND THE WOODLANDS OF THE BLAISE CASTLE, AND CONNECTIONS WITH LOCAL FOOD AND FARMING THROUGH OUR LAWRENCE WESTON COMMUNITY FARM AND ALLOTMENTS



Glossary of Terms



Biodiversity:

All the different kinds of life you'll find in one area—the variety of animals, plants, fungi, and even microorganisms like bacteria that make up our natural world.

Biomass:

Plant or animal material used as fuel to produce electricity or heat (eg. energy crops, waste from forests, yards, or farms. Since biomass can also be used as a fuel directly (e.g. wood logs), some people use the terms biomass and biofuel interchangeably.

Carbon emissions:

The carbon dioxide gas that planes, cars, factories, etc. produce which contribute to climate change
Carbon footprint: A tool to help us understand what changes we need to make to cut our emissions. They show us which actions result in emissions, and how much.

Circular economy:

An economic system of production /consumption based on using renewable resources, eliminating waste and reusing and recycling goods for as long as possible.

Climate change:

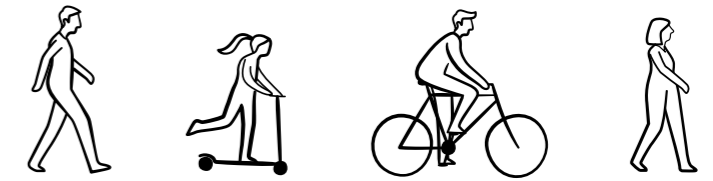
Whilst greenhouse gases occur naturally, human activity (especially the use of 'fossil fuels' - oil, gas, coal) has led to hugely increased levels of these gases. This has led to the earth getting hotter, and our climate changing all over the world. Our climate affects everything on earth – the landscapes, seas, animals, plants, and of course people – and small changes in climate can impact where humans and animals can live, what and how much we can grow, our health, our sea levels, and much more.

Green jobs:

Green jobs are those which in some way contribute to reducing the consumption of energy and raw materials, limit greenhouse gas emissions, minimise waste and pollution and protect and restore ecosystems.

Greenhouse gases:

Carbon dioxide, and other 'greenhouse gases', trap heat in the atmosphere and keep the earth warm (which is why they're called greenhouse gases). These gases, which occur naturally, make the earth a habitable place – without them it would be too cold to live here.



Just transition:

Ensuring the transition to a low carbon society/economy is equitable, that any benefits are shared widely, whilst supporting those who stand to lose out economically.

Renewable energy:

Energy that is generated from natural processes that cannot be exhausted and is constantly renewed (including solar/sunlight, geothermal heat, wind, tides, water).

Retrofit:

The introduction of new materials, products and technologies into an existing building to reduce the energy needed to occupy/use that building
Wildlife corridors: A strip of natural habitat connecting populations of wildlife otherwise separated by cultivated land, roads, housing etc.

Natural habitat:

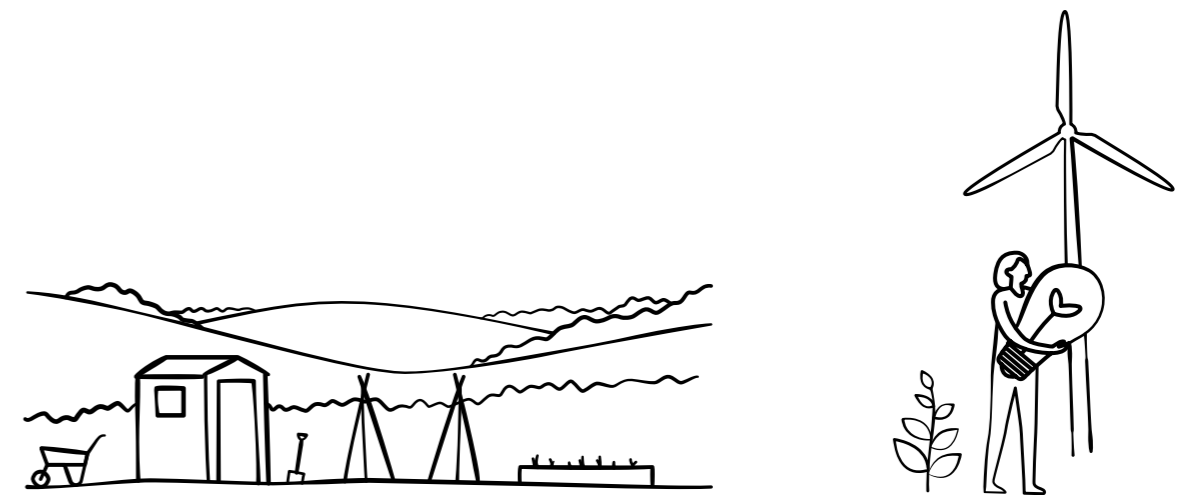
The natural environment in which a species of plant/animal/fungi etc lives.

Net zero and carbon neutral:

This means that any carbon dioxide that is emitted by the activities taking place is balanced by the same amount of carbon dioxide being absorbed from the atmosphere (sometimes achieving net-zero carbon dioxide emissions is referred to as 'carbon neutrality').

Wildlife corridors:

A strip of natural habitat connecting populations of wildlife otherwise separated by cultivated land, roads, housing etc.



Acknowledgements

Ambition Lawrence Weston would like to thank the following people and organisations for their contribution to the development of this Community Climate Action Plan:

- **The members of Lawrence Weston community** who took the time to engage in our consultation and community engagement process
- **All the local community groups and organisations** that have contributed (including: local schools and churches)
- **The Community Climate Action Project partners:** Bristol Green Capital Partnership (Amy Harrison), Bristol City Council (Mark Leach) CSE (Harriet Sansom), Eastside Community Trust (Emily Fifield), ACH (Katya Thickpenny Ryan), Bristol Disability Equalities Forum (Emma Geen), Lockleaze Neighbourhood Trust (Karen Edkins), Heart of BS13 (Kirsty Hammond) and Donna Sealey (Ambition Lawrence Weston) for their support and collaboration through the Community Climate Action Project
- **All the Community Climate Action City partners** who contributed to the Peer Review Roundtable event (Nov 2021)
- **Community Artists** Dee Moxon, Morgan Tipping and Tommy Chavennes for their creative contribution to our community engagement process
- **The National Lottery Community Fund:** Climate Action Fund for supporting the development of this plan.

Working together



In partnership with



Funded by



contact@ambitionlw.org
www.ambitionlw.org

 
 @ambitionlw

  
 ambitionlawrenceweston

